

# Beyond Expect- ations



# Greetings from our Founder



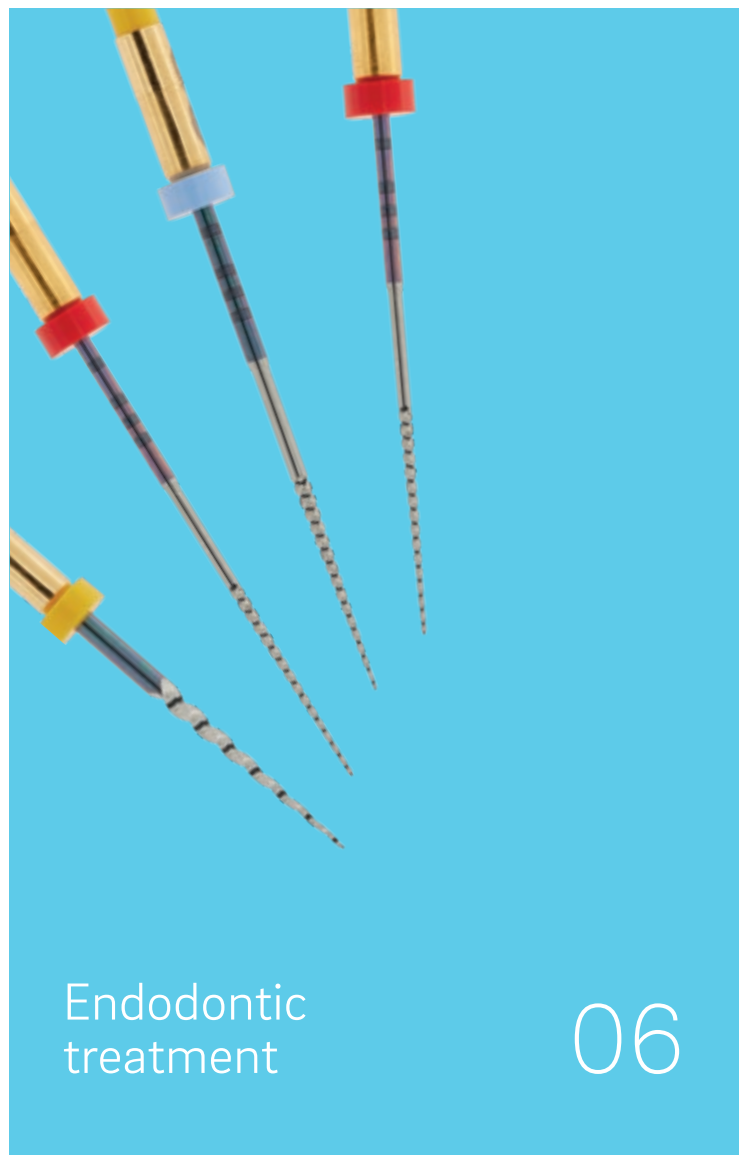
Welcome to Meta Biomed. Thirty years of business success speak for themselves: thanks to our dedication and innovative spirit, today we are a well-established name in the health and medical sector. We are committed to production excellence and guaranteeing customer satisfaction. We export our products to more than 80 countries and have been a driving force for innovation since our foundation. As a result of our research endeavours, we have not only consistently enhanced the quality of our own products, but have also made a long-term contribution to the further development of this entire industrial segment.

In the bio-engineering sector in particular, we have assumed a pioneering role with the development of alternative bone substitutes for Orthopaedic treatments. New and innovative products are on the verge of market maturity and will soon enable our customers to perform advanced treatments. As such, Meta Biomed is growing continuously and, looking toward the future, will continue to set great store by change and progress.

As a company in the health sector, we also have a particular responsibility vis-à-vis society. We remain continually focused on this responsibility and always do our utmost to ensure that every single product meets these standards. The entire Meta Biomed team embraces this responsibility with its shared values and rises to the daily challenges with creativity and dedication.

**Seok Song Oh**

Founder  
Meta Biomed



Endodontic  
treatment

06

07	<b>Aurum Blue</b>   Controlled Memory NiTi Files
08	<b>Aurum G</b>   Controlled Memory NiTi Files
09	Aurum Blue, Aurum G – protocol   Controlled Memory NiTi Files
10	<b>Aurum Pro</b>   Controlled Memory NiTi Files
11	Aurum Pro – protocol   Controlled Memory NiTi Files
12	<b>GL153</b>   Controlled Memory NiTi Files
14	<b>Gutta Percha Points</b>   Root canal filling
15	<b>Absorbent Paper Points</b>   Root canal filling
16	GP, PP - Packaging types   Root canal filling
17	<b>Metapaste</b>   Root canal medication
18	<b>ADSEAL</b>   Root canal sealer
19	<b>MD-ChelCream</b>   EDTA
20	<b>MD Cleanser</b>   EDTA
21	<b>NexPost</b>   Fiber Post
22	<b>CeraSeal</b>   Bioceramic Sealer
24	<b>GuttaSil</b>   Root canal sealer
26	<b>NexCore</b>   Core Resin



Endodontic  
equipment

27

28	<b>i-ROOT</b>   Electronic Apex Locator
29	<b>ES-100</b>   Endodontic Micro Motor
30	<b>EQ-S</b>   Effective 3D irrigation
32	<b>EQ-V</b>   Warm Gutta Percha Obturation
33	<b>GENESYS</b>   Motorized Cordless Obturator
34	EQ-V, GENESYS – Obturation process
35	EQ-V, GENESYS – Clinical cases
36	<b>EQ Condenser</b>   instrument
37	<b>Crown remover</b>   instrument
38	<b>EndoRing II</b>   Endo-Organizer



Restorative  
treatment

40

---

41	<b>Biner LC</b>   Light-Curing Type Cavity Liner
42	<b>Meta Etchant</b>   Etchant
43	<b>Meta P&amp;Bond</b>   5 <sup>th</sup> Generation Bonding System
44	<b>Nexcomp</b>   Nano-Hybrid Composite Resin
45	<b>Nexcomp Flow</b>   Nano-Hybrid Composite Resin
46	<b>Metacem</b>   Dual-Cured Resin Cement
47	<b>MD-Temp Plus</b>   Hydraulic Temporary Restorative
48	<b>NexTemp HV/NexTemp</b>   Light-curing Type Temporary Filling
49	<b>NETC/NETC Easy</b>   Non-Eugenol Temporary Cement
50	<b>Glare</b>   Polywave Curing Light
52	<b>MD-Flex</b>   Impression material
54	<b>NexSil Bite</b>   Impression material

---



Surgical & Implant  
Products

56

---

57	<b>Sorbone</b>   Bone replacement material
58	<b>SorGuide</b>   Synthetic bone
59	<b>Monotex</b>   PTFE Suture

---

# Endodontic treatment

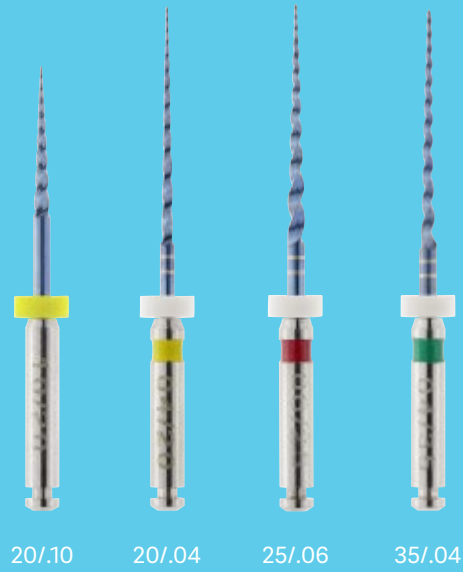


Innovative solutions from A to Z

# Aurum Blue™

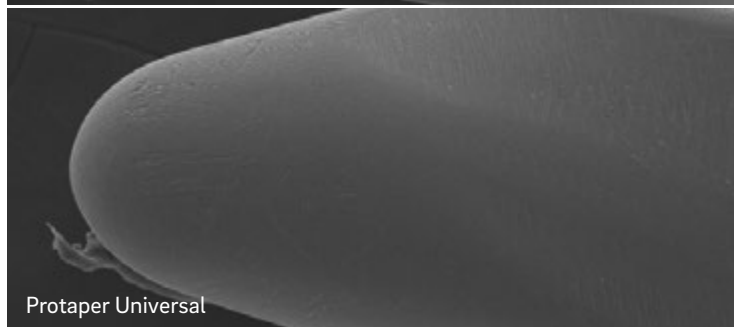
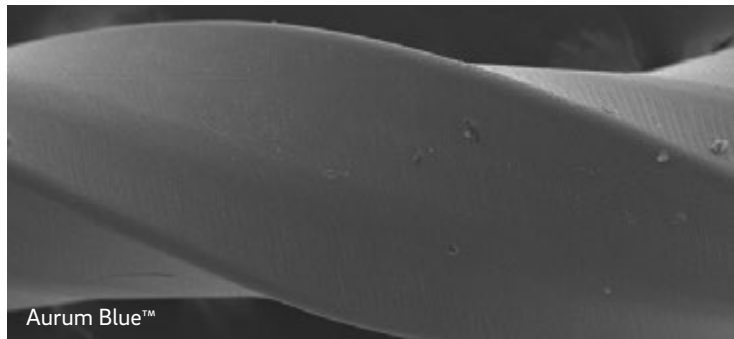
## Controlled Memory file

Blue – the colour of extraordinary elasticity and fracture resistance



## Benefits

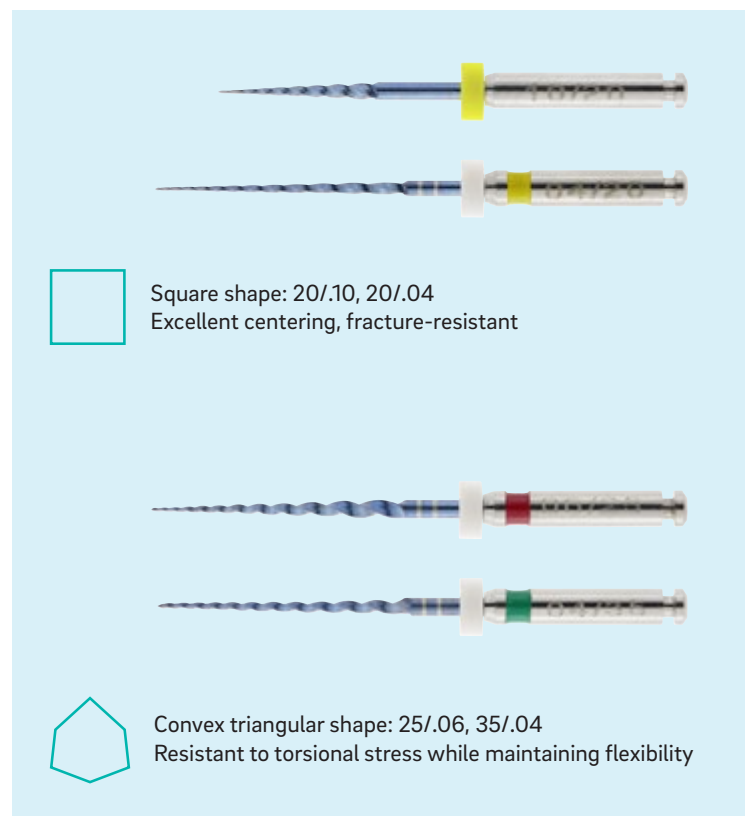
- Unique Manufacturing Process  
Due to the unique heat and surface treatment during manufacturing, Aurum Blue files offer maximum flexibility without compromising strength
- Super flexible alloy  
Significantly reduces the risk of ledging, transportation or perforation of a canal
- Bendability  
Easier access to a canal orifice
- Electro-polishing surface treatment  
Removes imperfections and adds strength
- Shape recovery  
Heat treatment during manufacturing allows for shape recovery during autoclaving



## Comparison

Extremely resistant to fracture		Number of cycles to failure
Aurum Blue 06.25		1800
Hyflex CM 06.25		1200
Aurum Pro 600 F2		600
Protaper Universal F2		300

Source: Yonsei University, Dental Material Research Center



# Aurum G™

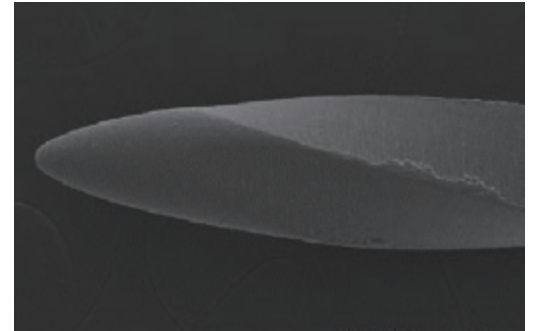
## Glide Path File



13/.025    17/.025

## Benefits

- Unique Manufacturing Process  
Due to the unique heat and surface treatment during manufacturing, Aurum G files offer maximum flexibility without compromising strength
- Increased flexibility  
With increased flexibility and more resistance to cyclic fatigue due to special heat-treatment, Aurum G offers many advantages over manual stainless steel files
- Electro-polished  
Removes surface imperfections



### Aurum Blue, pack of 4

Contents	Length		17 mm	21 mm	25 mm	31 mm
	ID	Size				
Sequence pack (20/.10, 20/.04, 25/.06, 35/.04)				•	•	•
CF (20/.10)		20	•			
T1 (20/.04)	●	20		•	•	•
T1.5 (25/.04)	●	25		•	•	•
T2 (25/.06)	●	25		•	•	•
T2.5 (30/.04)	●	30		•	•	•
T3 (35/.04)	●	35		•	•	•
T4 (40/.04)	●	40		•	•	•
T4.5 (45/.04)	○	45		•	•	•

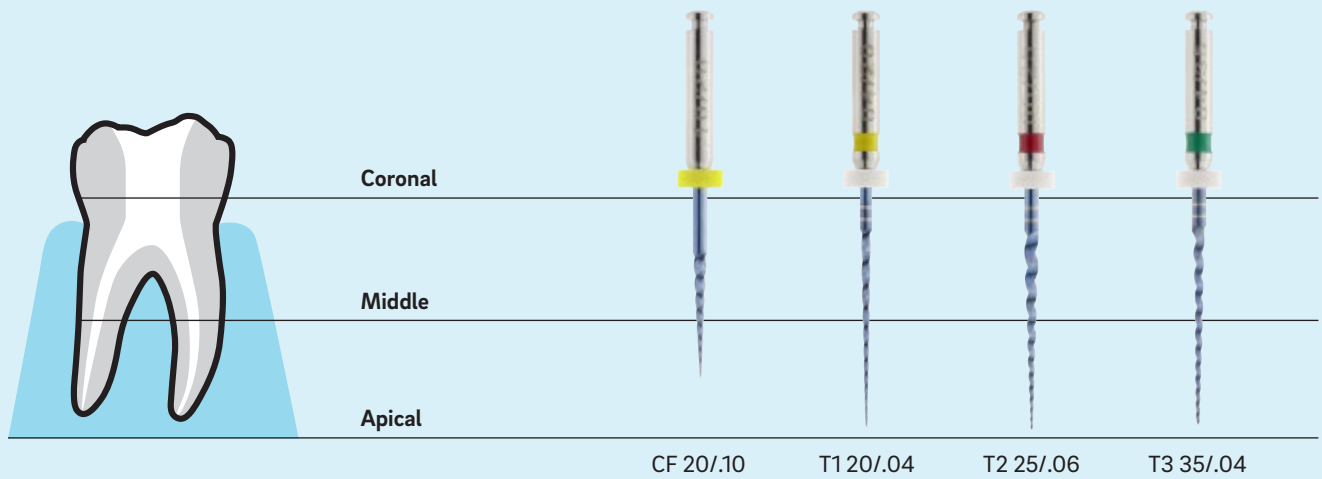
### Aurum G, pack of 6

Contents	Length		17 mm	21 mm	25 mm	31 mm
	ID	Size				
Assorted pack (13/.025 – 3 pcs., 17/0.25 – 3 pcs.)				•	•	•
13/.025	●	25		•	•	•
17/.025	○	25		•	•	•

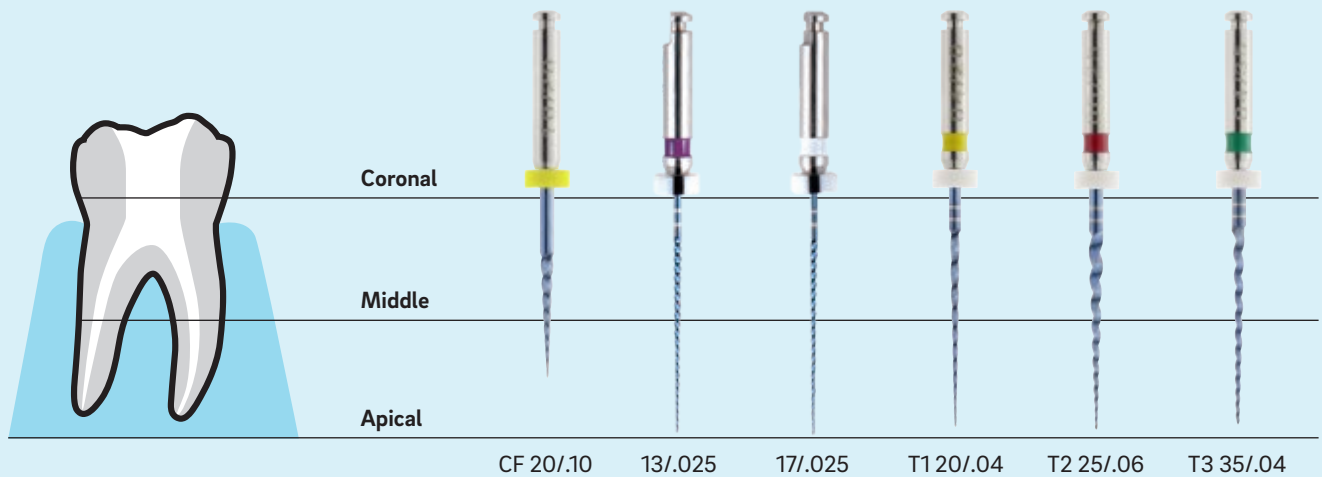


# Aurum Blue, Aurum G – protocol

## Standard

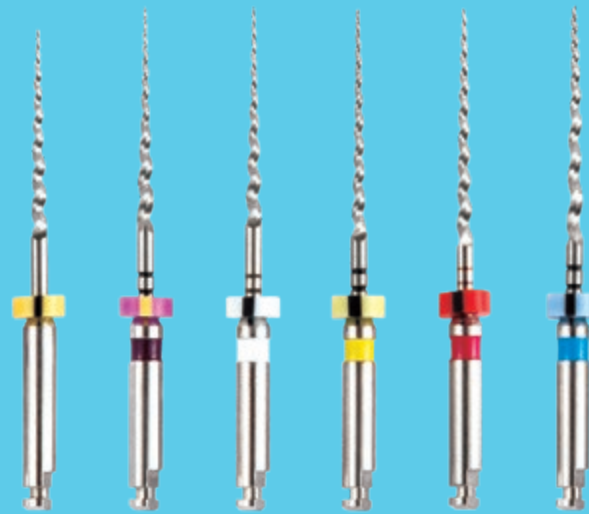


## Complex



# Aurum Pro™

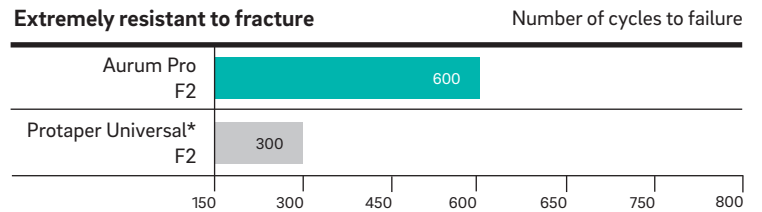
Familiar Sequence, Different Flexibility



## Benefits

- Unmatched flexibility  
Heat-treated NiTi gives amazing flexibility, inhibiting transportation of root canal
- The system you trust  
The most commonly used rotary file system
- Incredible strength  
100% more resistant to cyclic fatigue than

## Comparison



Source: Yonsei University, Dental Material Research Center  
\*Not a Meta Biomed trademark

## Matching GP and PP



**Aurum Pro  
Gutta Percha Points**

—————> Page 14

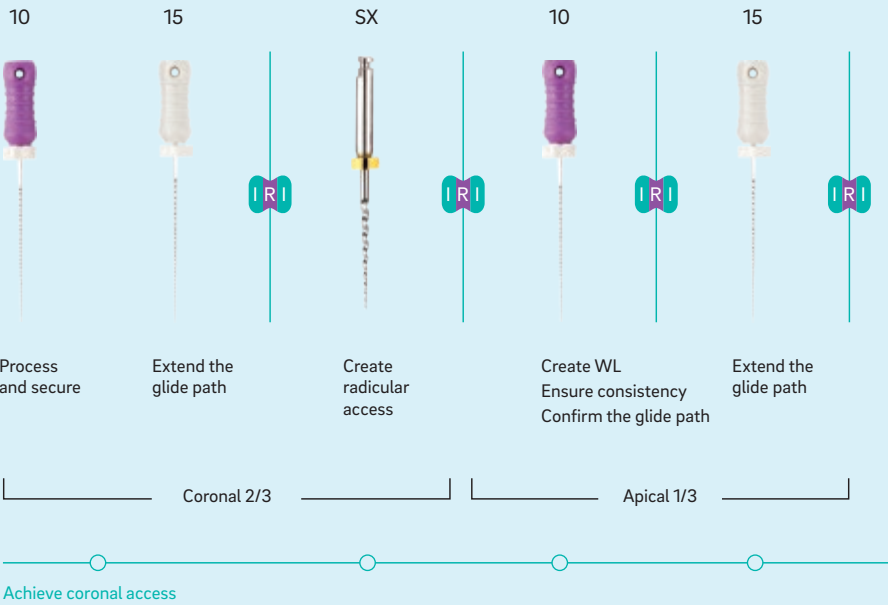


**Aurum Pro  
Absorbent Paper Points**

—————> Page 15

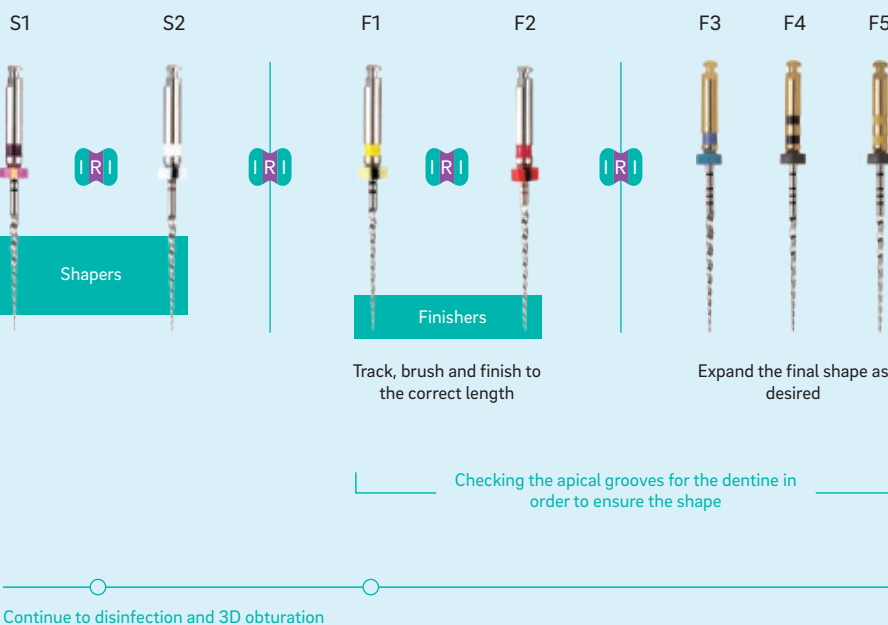
# Aurum Pro – protocol

## Access & glide path



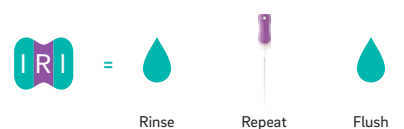
- Use MD-Chelcream and small hand files during the manual processing and securing of canals.
- Use NaOCl during the mechanical processing or shaping of canals.
- Use Aurum Pro SX files over one or more rounds, or use Aurum Pro SX to move the coronal aspect of a canal from an external root concavity; remove the triangles from the dentine or create more shape.
- Rinse, repeat with a size-10 file, and rinse again after each time a rotating file is removed.
- Clean and inspect the grooves on the rotating file on a regular basis.

## Design & finishing sequence



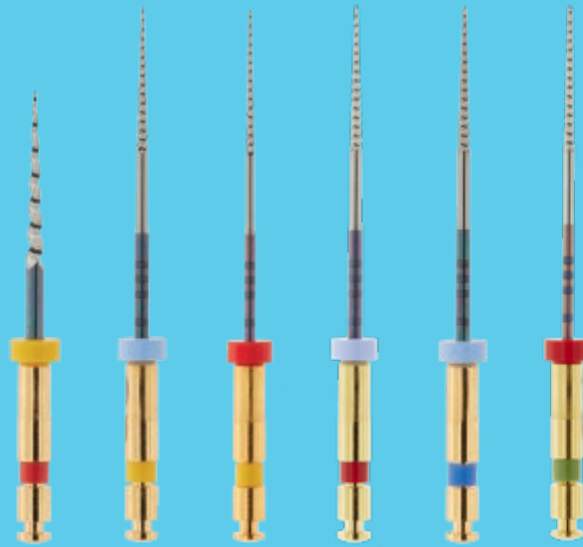
- Use Aurum Pro in regions of the canal that have a confirmed smooth and reproducible glide path.
- Use Aurum Pro with a light brushing motion on the irrigated area in order to optimally prepare canals with irregular cross-sections and to allow easier permeation of the apical file.
- Use Aurum Pro as needed to create a secure working length.

 300 RPM/torque 1.5 Ncm



# GL153

Controlled Memory file  
with shape memory



## Benefits

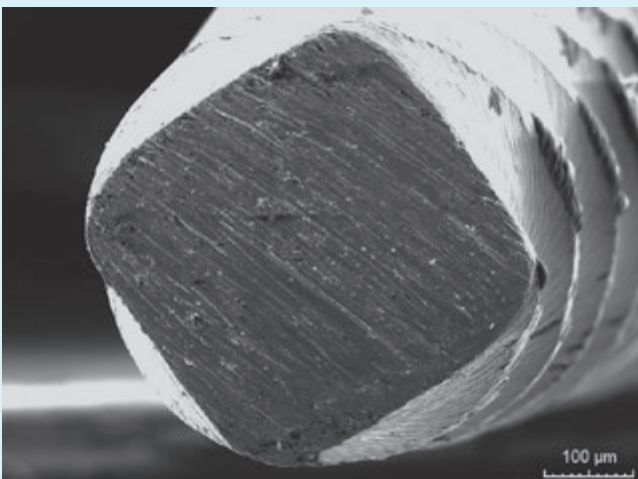
- The series 10 instruments are available in Stainless Steel or Nickel Titanium
- Offered with the Standard handles or the unique D&S dual-purpose handle
- GL153 is most effective when using constant downward pressure and a reciprocating motion with engine or by hand

## Areas of application

- The size 15 taper .02 is ideally suitable for preparing the glide path.
- The taper .02 also allows for largely interference-free preliminary work up to the apex, which is a real benefit with regards to tactility.
- Method: slow backward movement.
- With the careful selection of the GL153 Safe10 instruments, the number of instruments per channel can be reduced.

Significant fracture-resistance and unlimited flexibility with a 10 mm working part

Made in the  
**USA**

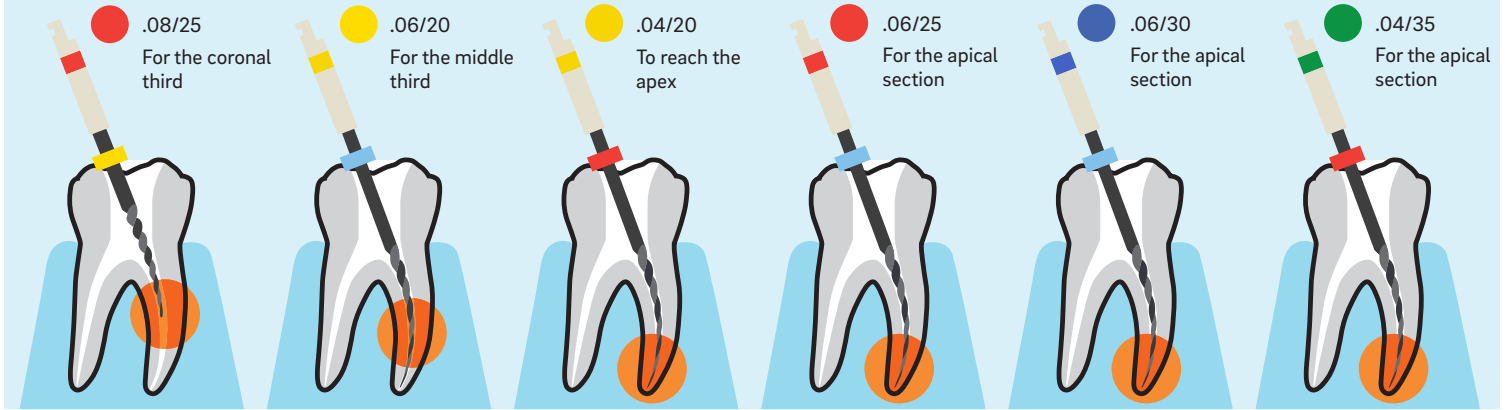


The optimised material structure and rounded cross-section of the GL153 make it easier to perform smooth and efficient canal preparation without damaging the tooth structure or risking a file fracture in the canal.

The production method occasionally has a significant impact on the fatigue strength and the torsional strength. An independent scientific study showed that the Controlled Memory wire used to produce the GL153 Safe10 series significantly increases the number of cycles: the instruments fail far later than comparable files on the market.

# Step by step

Use a low-speed handpiece (500 UpM).  
A torque of up to 2.5 N cm (25 mN m) is recommended.



## Packaging types

Assortment pack – 21 mm

File		Taper .04	Taper .06	Taper .08
Length		21 mm	21 mm	19 mm
ID	Size			
●	20	714201	716201	–
●	25	–	716251	718251
●	30	714351	716301	–

Assortment pack – 25 mm

File		Taper .04	Taper .06	Taper .08
Length		25 mm	25 mm	19 mm
ID	Size			
●	20	714200	716200	–
●	25	–	716250	718251
●	30	714350	716300	–

Single pack – 21 mm

File		Taper .02	Taper .03	Taper .04	Taper .06	Taper .08
Length		21 mm	21 mm	21 mm	21 mm	19 mm
ID	Size					
○	15	712151*	713151*	714151	716151	–
●	20	712201	713201	714201	716201	–
●	25	712251	713251	714251	716251	718251
●	30	712301	713301	714301	716301	–
●	35	712351	713351	714351	716351	–
●	40	712401	713401	714401	716401	–

Single pack – 25 mm

File		Taper .02	Taper .03	Taper .04	Taper .06	Taper .08
Length		25 mm	25 mm	25 mm	25 mm	19 mm
ID	Size					
○	15	712150*	713150*	714150	716150	–
●	20	712200	713200	714200	716200	–
●	25	712250	713250	714250	716250	718251
●	30	712300	713300	714300	716300	–
●	35	712350	713350	714350	716350	–
●	40	712400	713400	714400	716400	–

\*Only available in the regular NiTi version.



Observe the instructions for use



Sterilise before use



Only for single use



Temperature and time specifications for autoclaves

Made in the USA

# Gutta Percha Points

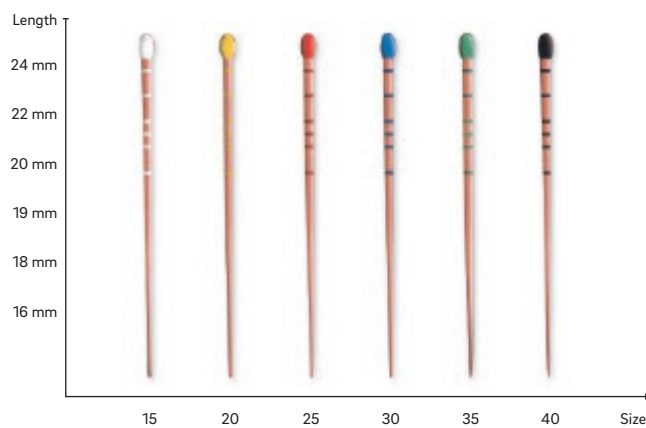
.02/.04/.06/.08/ Aurum Pro (F1-F3)  
Gutta Percha Points



## Benefits

- Long shelf life of 4 years
- Rigid and flexible
- Outstanding radiopacity
- Different sizes, tapers and packs

### Length markings



### Size & specifications

02 cone: 10-140
04, 06 cone: 15-80
08 cone: 15-40
Non-standardised: XF, FF, MF, F, FM, M, ML, L, XL
Japanese style: JF-S, JF-M, JF-L, JS, JM, JL, JL-S, JL-M, JL-L
De Trey style: XX-F, X-F, Fine, Medium
Protaper size (F1-F5)

### Specifications

Size	Taper (points)				Packaging type
	02 (120)	04 (60)	06 (60)	08 (60)	
10					see page 16 →
15					
20					
25					
30					
35					
40					
45					
50					
55					
60					
70					
80					
90					
100					
110					
120					
130					
140					

# Absorbent Paper Points

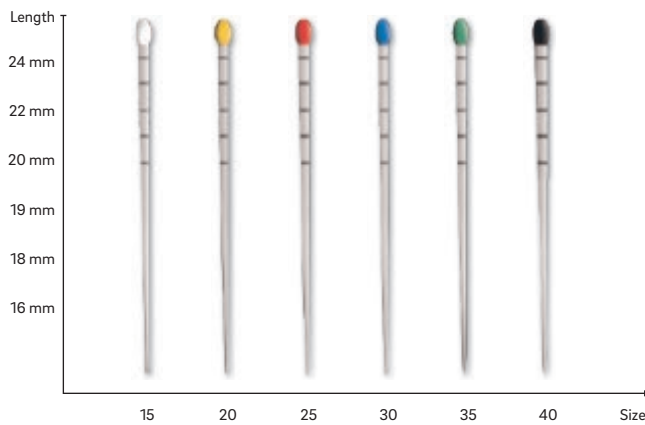
.02/.04/.06/.08/ Aurum Pro (F1-F3)  
Paper Points



## Benefits

- Highly absorbent
- Sterilized individual packages
- Various sizes and packages available
- 5yrs Shelf life

### Length markings



### Size & specifications

02 taper: 15-140

04, 06, 08 taper: 15-80

08 taper: 15-40

Non-standardised:

- Non-standardised: XX-Fine, X-Fine, Fine, Medium, Coarse, X-Coarse
- Aurum Pro
- F1-F3

## Specifications

Size	Taper (points)				Packaging type
	02 (120)	04 (60)	06 (60)	08 (60)	
10					see page 16 →
15					
20					
25					
30					
35					
40					
45					
50					
55					
60					
70					
80					
90					
100					
110					
120					
130					
140					

# Packaging types

Private labels are available in all packaging types



## Pack of 6 vials (square)

- Code: P.31
- Regular point packs: GP: 60/120 points – PP: 60/200 points
- Dimensions: 84 × 51 × 16 mm



## Pack of 6 vials (round)

- Code: P.31
- Regular point packs: GP: 60/120 points – PP: 60/200 points
- Dimensions: 84 × 51 × 16 mm



## Slide dispenser

- Code: P.71
- Regular point packs: GP: 60/120 points – PP: 60/200 points
- Dimensions: 70 × 45 × 12 mm



## Dispenser with 4 compartments

- Code: P.51
- Regular point packs: GP: 60/120 points – PP: 60/200 points
- Dimensions: 70 × 45 × 13 mm



## Endo organizer

- Code: P.11
- Leak-proof, 12 compartments
- Size: ISO 15–80
- Colour-coding available
- Regular point packs: – GP: 240 points, PP: 400 points



## Absorbent Paper Points

- Code: P.61
- Regular point packs: 180/200 points
- Dimensions: 163 × 54 × 11 mm
- Only available for PP



# Metapaste

Temporary fixing cement with calcium hydroxide base



## Benefits

- Gentle cleaning and removal with good water solubility
- Outstanding antibacterial effect and radiopacity
- Pre-mixed paste
- Syringe-type for easy delivery of the paste into the canal
- Disposable tips for prevention of cross-contamination

## Areas of application

- Weeping canal
- Formation of a hard tissue barrier (apexification)
- Root canal filling for deciduous teeth
- Internal and external root resorption

### Components

- 2.2 g paste in a syringe (pack of 2 available)
- disposable tips
- rotational joint for direction control of the tip
- Dimensions: 228 x 61 x 22 mm
- Weight: 46 g

### Composition

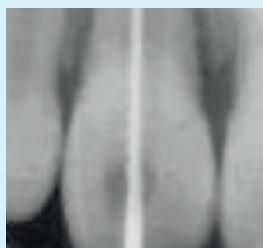
Calcium hydroxide, barium sulphate, polypropylene glycol

### Shelf life

2 years from the date of manufacture

## Clinical cases

### Apexification

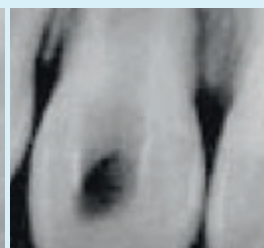


**Before treatment:**

- Large apical foramen with incomplete apex
- Note the root resorption at the lateral surface

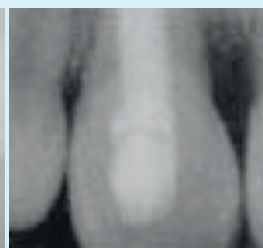


**Metapaste filling**



**Three months later:**

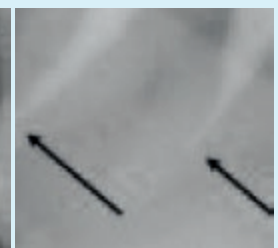
- The apical barrier is formed three months after the paste is removed



**Six months later:**

- Outstanding healing with no further root absorption

### To locate a genuine apical foramen



Approximately 1-2 months later, an X-ray image shows the location of the genuine apical foramen.

# ADSEAL™

Resin Based Sealer



## Benefits

- Excellent biocompatibility
- Easy-to-mix paste
- Hermetic sealing capacity
- Nonstaining to the teeth
- Insoluble in tissue fluid
- Good radiopacity

## Areas of application

- Permanent sealing of the root canal
- Thermal obturation

### Components

13.5 g dual syringe

9 g base (epoxy resin, calcium phosphate)

4.5 g catalyst (amines, bismuth III carbonate)

Spatula

Mixing plate

Dimensions: 55 x 180 x 40 mm

Weight: 98 g

### Composition

Base of epoxy resin oligomer, hydroxyethyl salicylate, bismuth III carbonate

Catalyst of polybutane diol amino benzoate, calcium phosphate, bismuth III carbonate

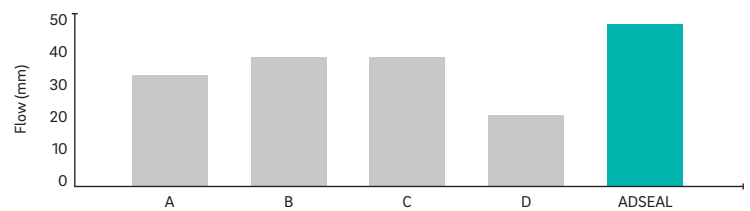
### Shelf life

2 years from the date of manufacture

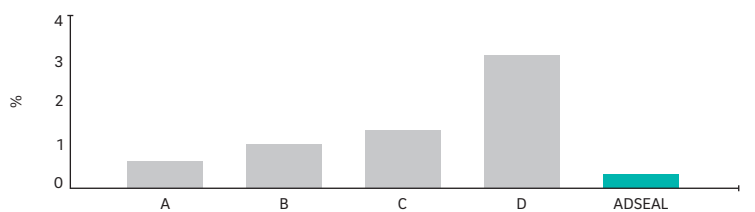
## Properties

- working time: 35 minutes at 23°C (73°F)
- Setting: 45 minutes at 37°C (99°F)
- Film thickness: 3.3 µm

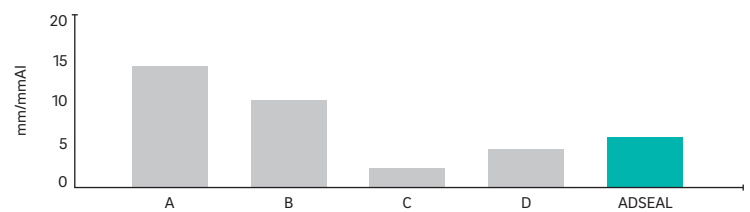
### Flow



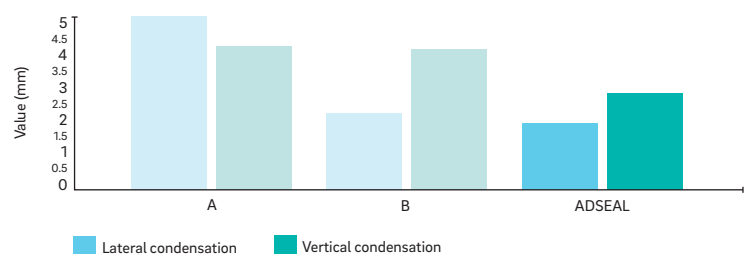
### Solubility



### Radiopacity



### Material properties



# MD-ChelCream

EDTA Cream for Root Canal Cleaning and Preparation



## Benefits

- Removal of inorganic substances through chelation (EDTA-Ca<sup>2+</sup>)
- Easier filling thanks to lubrication effect
- Produces the cleanest canal wall after smear layer removal

## Areas of application

- Root canal preparation with files and reamers
- Presence of calcifications in the canal
- Narrow canals in the premolars and molars
- Smear layer removal

### Components

MD-ChelCream 7 g (5.4 ml) × 2

Disposable tips

Dimensions: 186 × 45 × 30 mm

Weight: 59 g

### Composition

EDTA, PEG

### Shelf life

2 years from the date of manufacture

Why not find out about our endodontic equipment too?



**i-ROOT**  
Fully automatic electronic apex locator



**EQ-V Set**  
Wireless device for root canal obturation



**ES-100**  
Endodontic micromotor

# MD-Cleanser

EDTA Solution



## Benefits

- Removal of inorganic substances by chelation (EDTA-Ca<sup>2+</sup>)
- Easier instrumentation by softening dentin canal wall
- Produces the cleanest dentinal walls after smear layer removal

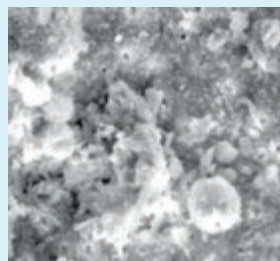
## Areas of application

- Presence of calcification in the canal
- Narrow canals on posterior teeth
- Smear layer removal
- Root canal cleaning

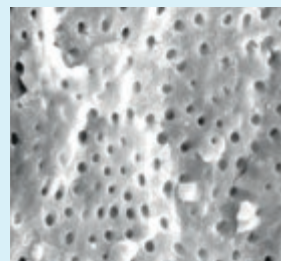
## Clinical cases



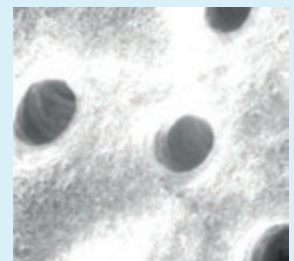
Methods of application



Following preparation of the root canal



Following application of the MD Cleanser (×1000)



Following application of the MD Cleanser (×7000)

### Components

MD Cleanser: 100 ml

1cc syringe

Disposable tips

Dimensions: 106 × 50 × 53 mm

Weight: 138 g

### Composition

EDTA, PEG

### Shelf life

2 years from the date of manufacture



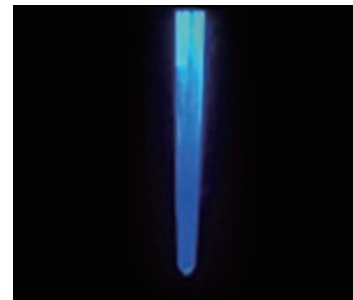
# NexPost

Fiber Post

## Physical and chemical properties

### Benefits

- Radiopaque
- Translucent
- Optimal flexural strength (close to dentine)
- Excellent light transluency for efficient light-curing deep in the root canal

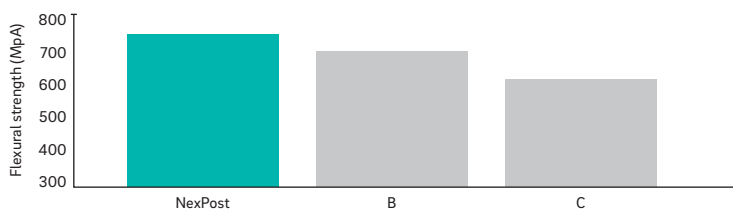


Translucency

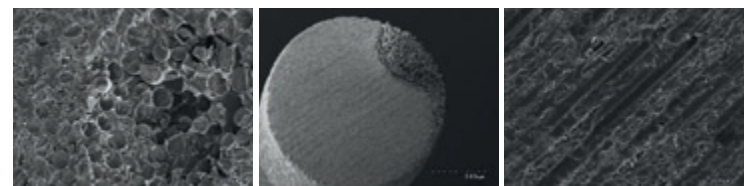


Radiopacity

### Strength test

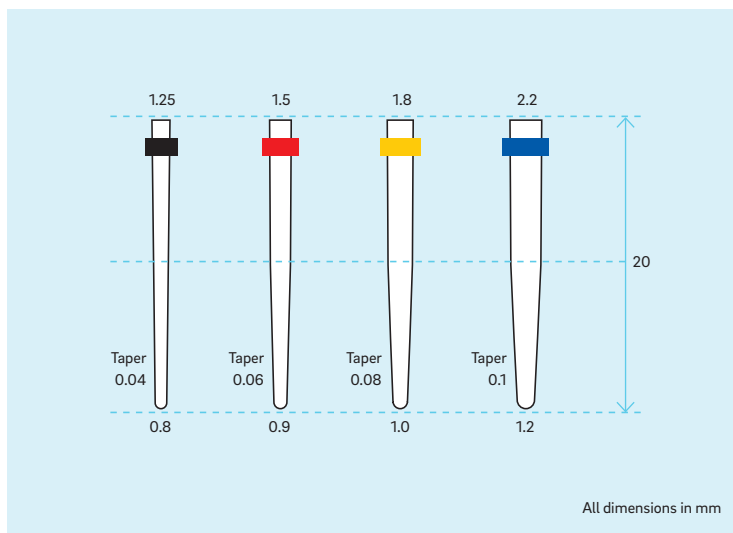


## Scanning electron microscope



Fibreglass  
Composite resin matrix

### Sizes



### Components

- NexPost kit (pin x20, drill x5)
- NexPost re-fill (pin x5)
- NexPost re-fill drill (drill x1)

### Composition

Glass Fibre, resin with Bis-GMA base

### Shelf life

3 years from the date of manufacture

# CeraSeal

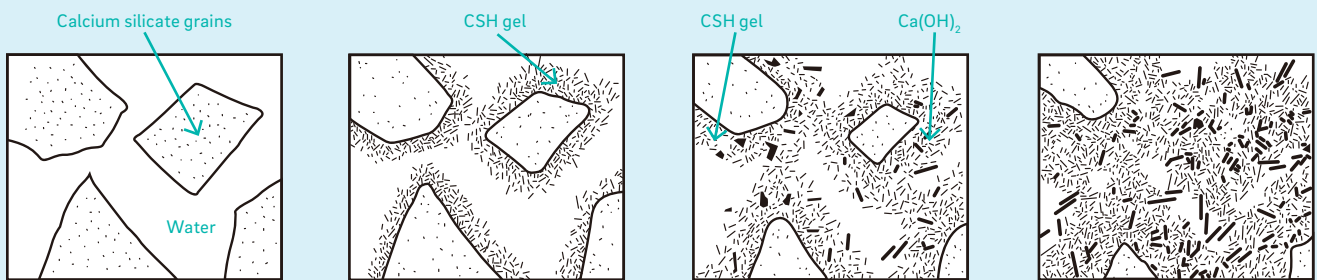
Calcium Silicate-based Bioceramic Root Canal Sealer



## Benefits

- anti-microbial
- optimal biocompatibility
- excellent sealing ability
- Unique stability

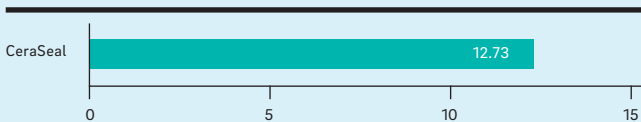
## It's Calcium Silicate!



Calcium silicate produces CAH (Calcium Aluminate Hydrate) gel and CSH (Calcium Silicate Hydrate) gel by absorbing the moisture from surrounding tissues in the root canal and some crystallization of Calcium Hydroxide ( $\text{Ca(OH)}_2$ ).

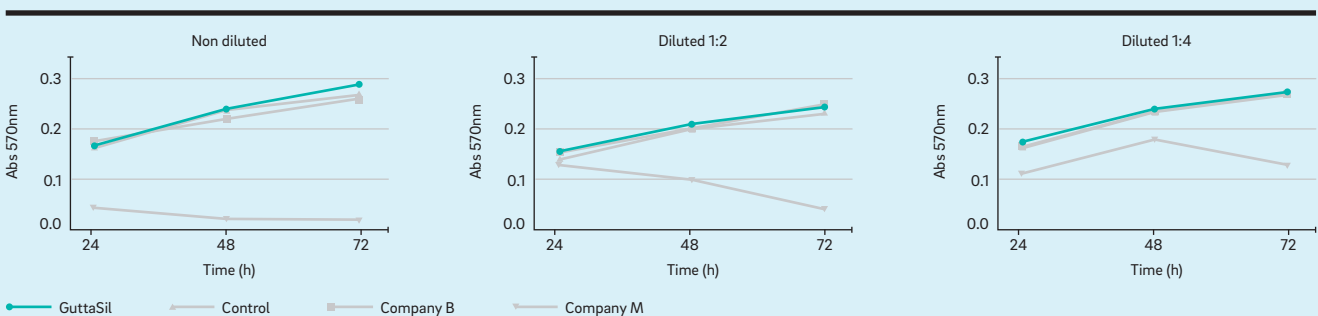
## Anti Microbial, High Biocompatibility

pH



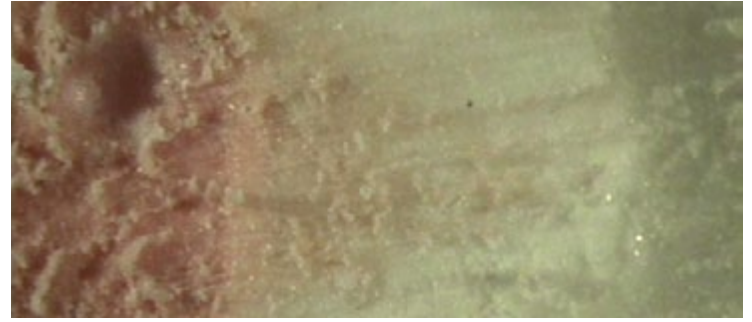
This test result shows that even if CeraSeal has high pH (12.73), it proves high biocompatibility.

### Bioactivity and cytocompatibility of new bioceramic sealer



## Excellent Sealing Ability

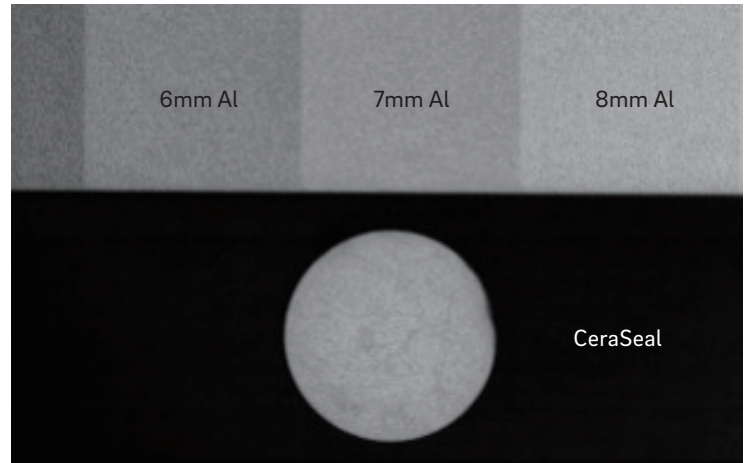
- Moisture in the dentinal tubules and Calcium Silicate's chemical reaction produce crystallization of Calcium Hydroxide
- CeraSeal is perfectly and fully hermetic in the root canal
- It prevents from the propagation of bacteria



## Unique stability

- CeraSeal never shrinks or expands in the root canal
- It prevents from odontoclasia by keeping its stable volume
- The Single cone technique obturation can be performed

## Excellent Radiopacity: 8mm Al

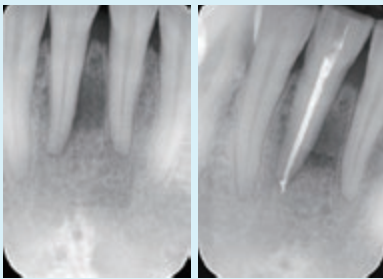


## Shorter Setting time

→ prevents from wash-out phenomenon

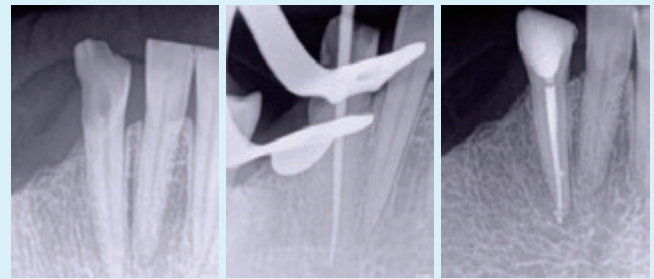
The wash-out phenomenon can happen if the MTA or MTA based sealer is not sufficiently cured or the exudate is produced in the root canal. Consequently, the root canal sealer is washed away by physical forces. CeraSeal prevents by curing faster than other sealers.

## Clinical Cases



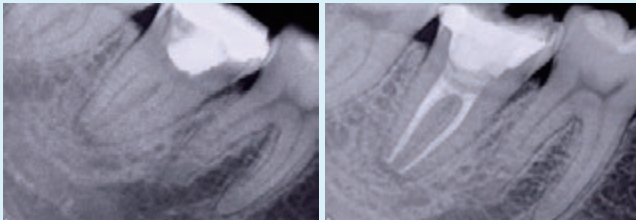
Before After

Courtesy of Dr. Walter Vargas Obando



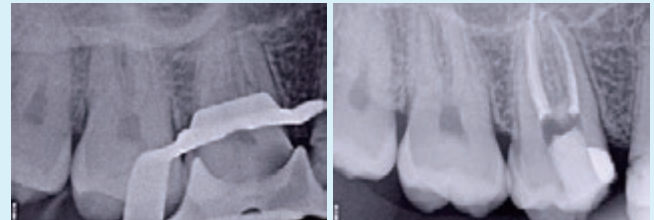
Before After

Courtesy of Dr. Jenner O. Argueta



Before After

Courtesy of Dr. Jenner O. Argueta



Before After

### Physical Properties

Setting Time	3.5 h
pH	12 <
Radiopacity	8mm <

### Components

CeraSeal	2g Pre-mixed syringe × 1EA Intra canal tips × 15EA
----------	---

# GuttaSil

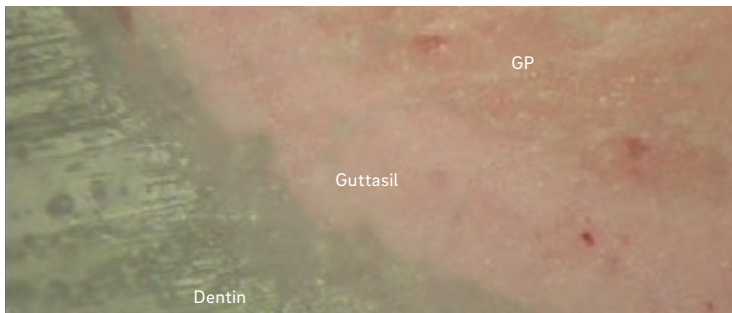
The Simplest way for obturation



## Benefits

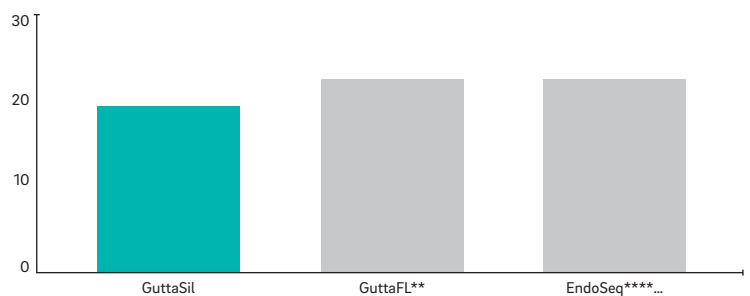
- Simple obturation-technique
- Dimensional stability
- Strong bonding
- Excellent flowability

## Combine with Master cone



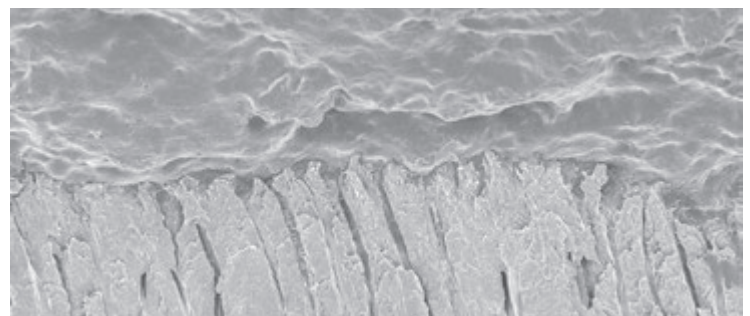
Guttapercha-based sealer: excellent adhesive ability to GP.

Bondingstrength (n)



## Excellent flowability

- Thixotropic properties give better flowability
- Flows smoothly into smallest root canals
- enables three-dimension obturation in complex root canal systems

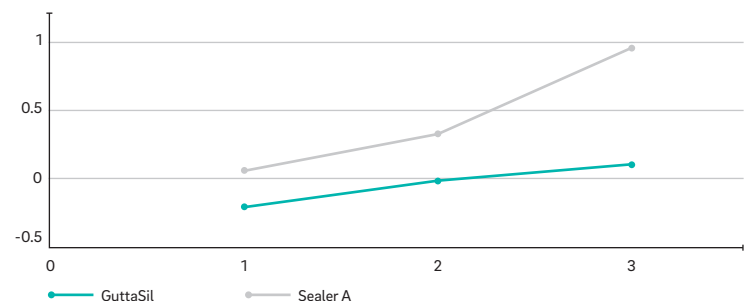


## Dimensional stability

- No dimensional change in the root canal
- Enables to perform Single Cone Technique



Shrinkage





## 3 Step Obturation – Remarkably Simple!



1

Select the master cone



2

Insert the master cone with GuttaSil



3

Cut the excess GP

## Clinical Cases

○ Cold obturation with GuttaSil



Before



Before



After

Courtesy of Dr. Jenner O. Argueta



Before



After

Courtesy of Dr. Jenner O. Argueta

### Physical Properties

Setting Time (mins)	25
Working time (mins)	4
Film thickness (µm)	20

### Components

<b>GuttaSil</b>	GuttaSil dual syringe × 1ea Mixing tip (endo tips) × 12ea Mixing pad × 1ea Spatula × 1ea
<b>GuttaSil Refil</b>	GuttaSil dual syringe × 1ea

# NexCore™

Dual-cured build-up material



## Benefits

- Suitable viscosity and flow for post cementation and core build-up
- Dual curing: light-curing and self-curing are possible, so no need to worry about incorrect resin polymerisation
- Biocompatibility (ISO10993)
- Easy-to-mix by auto-mixing type, Direct injection: Intraoral-tip, Endo-tip
- Excellent radiopacity
- 3 shades (tooth, white and ceramic restoration blue: metal restoration)
- Suitability for cutting (flexural modulus: NexCore 14.2GPa)

## Areas of application

- Post-adhesions and core structures in restorations

### Components

NexCore cartridge ×1 with 50 g paste, 30× Automix tip, 30× intraoral tip

NexCore cartridge refill ×1 with 50 g paste (shade: tooth, white, blue)

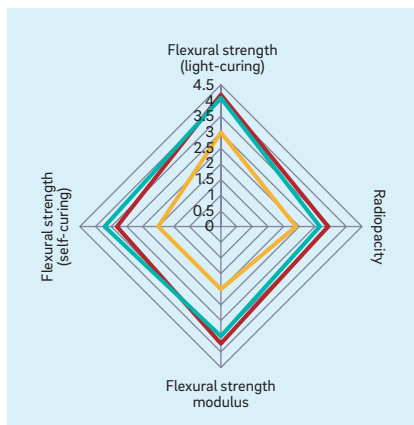
NexCore dual syringe ×2 with 9 g paste, 20× Automix tip, 10× Intraoral tip, 10× Endo-tip

NexCore dual syringe refill ×1 with 9 g paste (shade: tooth, white, blue)

### Radiopacity



### Composition of physical property parameter



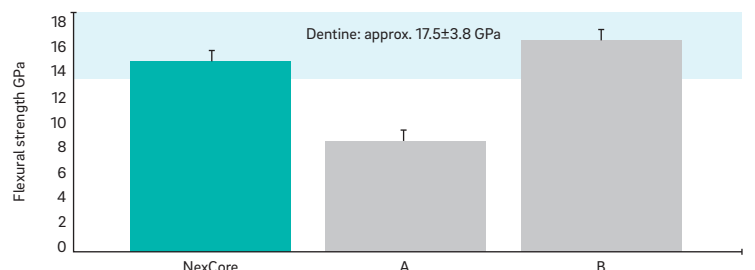
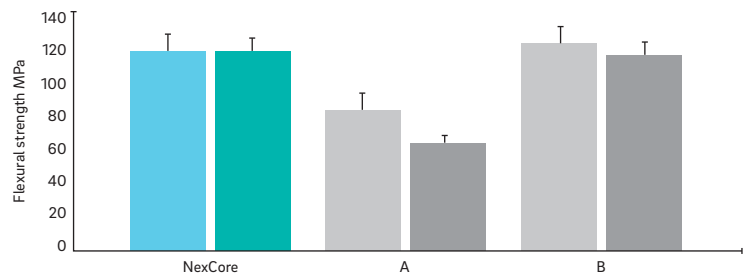
### Composition

Barium glass, ytterbium(III) fluoride, pyrogenic silicic acid  
Bis-GMA, TEGDMA

### Physical properties

Working time	1:50 - 2:20 min
Setting time	4:00 - 5:00 min (self-curing) 20 - 40 s (light-curing)
Flexural strength (light-curing)	20 - 40 s (light-curing)
Water resorption, solubility	16.5/ 2.3 µg/mm <sup>2</sup>
Radiopacity	Optical density corresponds to the optical density on a 4.2 mm aluminium step wedge
Shade and colour stability	No change in colour and identical to the shade guide. <small>*tested as per ISO 4049</small>

### Flexural strength modulus – polymerisation shrinkage rate



# Endodontic equipment



Successful treatments with  
revolutionary equipment

# i-Root

## Electronic apex locator

i-ROOT is the 5<sup>th</sup> generation dual-frequency apex locator model. i-ROOT precisely measures the apical constriction without any measurement errors.



## Benefits

- Optimal precision in all root canal conditions (dry, bleeding, wet, saline, EDTA, NaOCl or chlorhexidine etc. ...)
- Simultaneous visual and sound measurement
- Colour display
- Stylish and ergonomic design
- Simple operation
- Self-test to check the system
- Automatic power-off function
- Stable and durable in a wide range of conditions
- Computer monitoring and patient management via USB interface

### Components

1 i-ROOT main unit
1 probe cable
1 file holder A
2 file holder B
5 lip clips

### Specifications

Dimensions	W110 × H100 × D117 mm
Screen	W79 × H70 mm
Battery	Lithium-ion, DC 7.2 V, 2200 mAh
Continuous operation	60 hours
AC adapter	AC 100-240 V, (50-60 Hz)
Weight	390 g

Device	Battery	Connection to the monitor
i-ROOT S	Rechargeable battery	•
i-ROOT A	Rechargeable battery	×
i-ROOT 100	AA battery (×3 each)	×

# ES-100

Endomotor



## Benefits

- Powerful Performance with Long-lasting Battery
  - Stable Rotation: 250-800RPM (16:1)
  - Torque: 0.6-6.4 NCM
  - 10hrs of working time (2200mAh)
  - Swiss Micro Motor
- Ergonomically Designed Body with Small Headed, Durable, Chemically Resistant Contra-Angle
  - Remains intact after 1 week of immersion in Cavicide
- Torque Auto-Reverse, Auto Forward, Reciprocation
- Memory Functions
  - Memo 1 - 9
  - Memorizing RPM, Torque, Reverse Function, Rotation Direction

### Components

1 control unit

1 handpiece

1 contra-angle

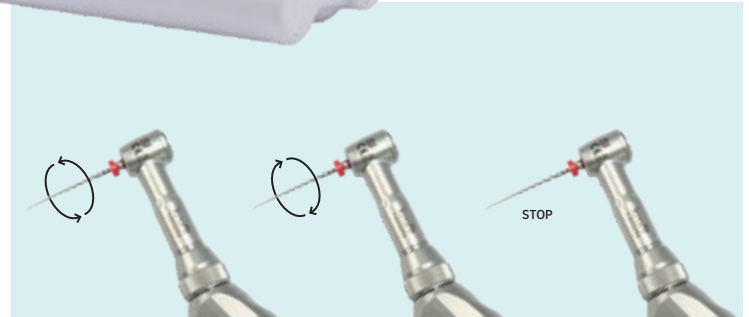
1 AC adapter

### Specifications – control unit

Rated input current 7.2V, 1.2A

Dimensions ø16.7 × L63

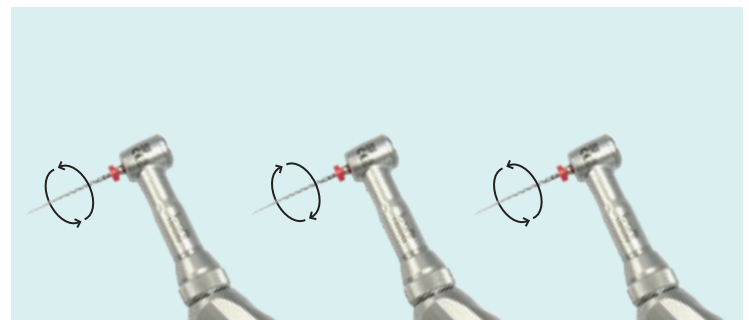
Weight 443 g



1

#### Auto Reverse

When the current torque is reached (1), the handpiece will run in an anti-clockwise direction (2), causing the file to run free and then stop (3).



2

#### Auto Forward

When the current torque is reached in Auto Forward mode (1), the file will automatically rotate in the opposite direction (2), causing it to run free, and will then continue to rotate in a clockwise direction (3).

# EQ-S

Effective 3D irrigation for a successful root canal treatment.

Active Flow™  
Technology



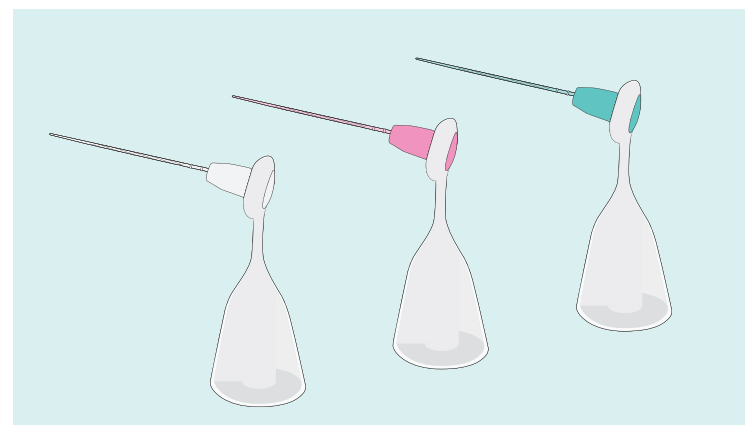
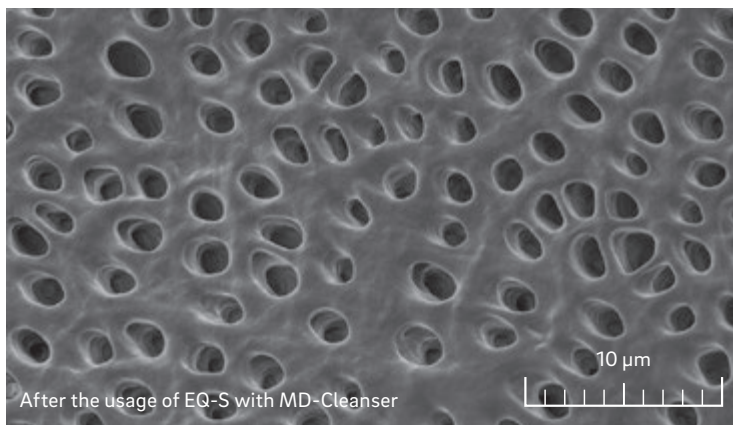
## Benefits

- Less pressure to the apical foramen
- Easier access to curved canals
- Perfect interaction with irrigant
- Color coded

## Rotational & Vertical Movement

Indentation along the tip, combined with counter clockwise motion, ensures 3D Active Flow™. The unique shape and design of the EQ-S tip create stronger force, which enhances flow in small canals.

## Powerful Cleaning





### Specifications

<b>Dimensions (W x H x L)</b>	24 mm x 25 mm x 183 mm (Including tip)
<b>Weight</b>	43 g
<b>Battery</b>	1.5 V Alkaline (AA) – Not included in the Kit
<b>Operation Time</b>	9 hours (continuous operation)

### Contents

Item Code	Description	Remark
<b>026-210</b>	EQ-S Gray Kit	Tips and Protective Sleeves included
<b>026-220</b>	EQ-S Pink Kit	Tips and Protective Sleeves included
<b>126-230</b>	EQ-S Tip 15/02	30ea/1set (Color: White)
<b>126-240</b>	EQ-S Tip 25/02	30ea/1set (Color: Red)
<b>126-250</b>	EQ-S Tip 35/02	30ea/1set (Color: Green)
<b>126-260</b>	Protective sleeve	100ea/1set

## Testimonial



**Dr Jenner Argueta,**  
DDS, M.Sc.

My clinical feeling of EQ-S, as a multidirectional sonic device and the novel design of the activating tips, when working inside of the root canal is quite good. It is also useful in my clinical practice for removing medicaments, spreading bioceramic sealers inside of the root canal previous to the placement of the master cone and cements previous to the placement of fiber posts.



**Dr Johnny Onori,**  
DDS, M.Sc.

EQ-S is an innovative device, versatile, of easy clinical use, offering something that so far had not been seen in a sonic device. My clinical experience is the multidirectional movement of the tip causing more fluid dynamics, creating continuous waves and having better cleaning, disinfection and removal of the smear layer. High power can be used for irrigation or removing Calcium hydroxide and low can be used for spreading bioceramic sealer before placing the master cone.

# EQ-V

## Cordless root canal obturator

The new EQ-V system from META BIOMED, for the reliable, practical and precise obturation of root canals.

NEW



## Benefits

- Chemically resistant and ergonomically designed body (remains intact after one week of immersion in cavicide)
- Durable flexible GP Cartridge
- Easy maintenance due to unique structure
- Outstanding heating performance

## Specifications

<b>Charger</b>	Input	100–240 V
	Output	DC 9 V; 2.0 A
<b>EQ-V Fill</b>	Heater	DC 3.8 V; 8 W
	Heating Time	≈ 35 seconds
<b>EQ-V Pack</b>	Heating Time	1 second
<b>Operating time</b>	Fill	Continuous for 1 hour
	Pack	Continuous for 1.5 hours
<b>Battery (Li-ion)</b>	Li-ion	3.6V, 1900mAh
	Charging time	3 hours

## Content

Part Number	Description	Fill	Pack	Battery	Single Charger	Dual Charger	Pack Tip	Cartridge	GP Bar (100ea)
EQV026	EQ-V Fill Kit	1	1	3		1	2 (50/04, 06/05)	1 pack (25G)	1
EQV027	EQ-V Fill Kit	1		2	1			1 pack (25G)	1
EQV022	EQ-V Pack Kit		1	2	1		2 (50/04, 06/05)		



# GENESYS

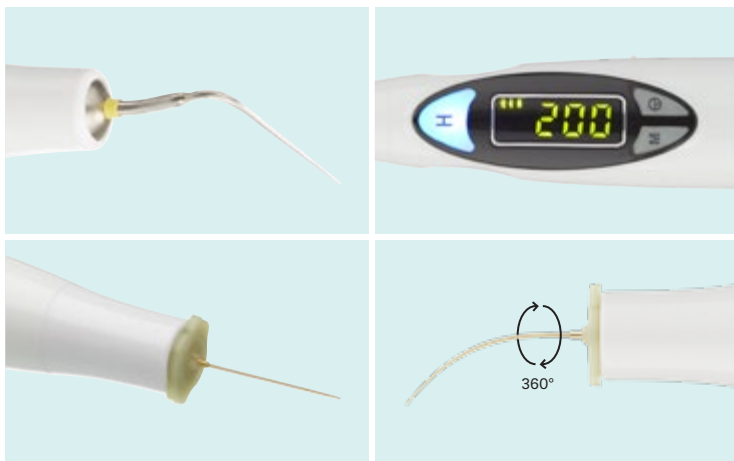
Genuine system. Genius results.

Cordless, motorised obturation device for the reliable, practical and precise filling of root canals.



## Benefits

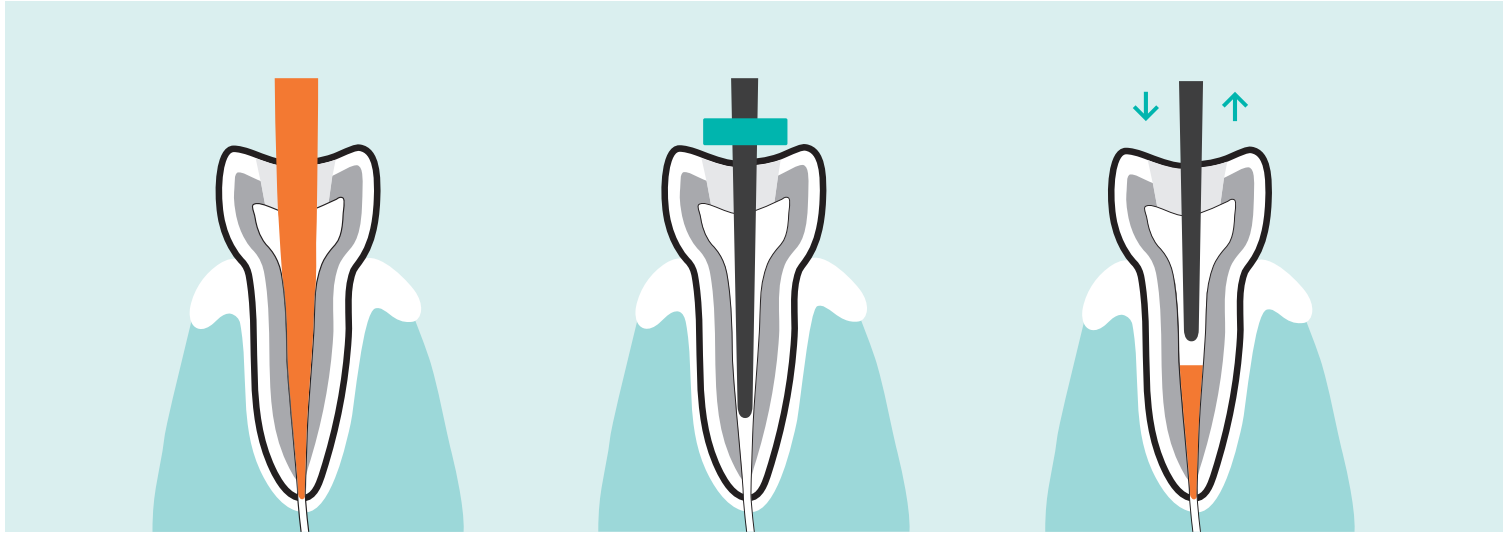
- Convenient cordless device using battery
- Cordless and electric motorized filling system
- New cartridge needle to refill GP pellet
- High capacity lithium-ion battery
- Simple, easy and quick to use



## Specifications

<b>Charger</b>	Input	9.0V
<b>Dimensions (W x L x H)</b>	Single charging station	160 mm x 80 mm x 45 mm
	Double charging station	220 mm x 80 mm x 45 mm
<b>Adapter</b>	Input	100-240V
	Output	9.0V, 2.0A
	Dimensions	84 mm x 47 mm x 31 mm
<b>Genesys Pack</b>	Dimensions (W x L x H)	153 mm x 27 mm x 25 mm
	Weight	90 g (incl. battery)
	Temperature range settings	140, 200, 300°C
	Automatic switch-off	5 minutes
<b>Genesys Fill</b>	Dimensions (W x L x H)	221 mm x 27 mm x 26 mm
	Weight	179 g (incl. battery)
	Temperature range settings	140, 160, 180, 200°C
	Automatic switch-off	5 minutes
<b>Battery</b>	Lithium-ion battery	3.6V, 1900mAh

## Obturation process – Fast, reliable and dense filling



1

Fit a master cone that matches the size and taper of the canal being obturated and trim the tip to 0.5mm short of the working length.

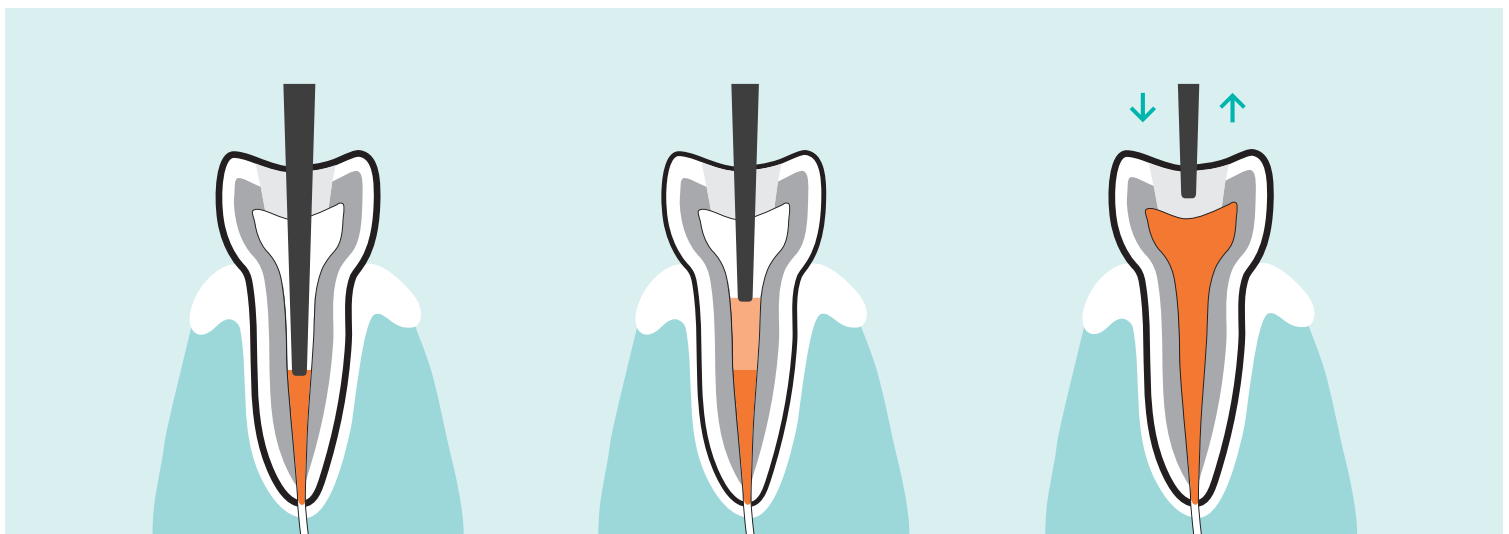
2

Select an EQ-V Pack Tip to reach a depth 4–6mm short of the working length.

3

Coat the bottom 3 mm of the master cone with sealer and insert it into the root canal. Remove excess gutta-percha using the EQ-V Pack Tip to 4–6mm short of the working length.

Condense the gutta-percha with a hand plugger to completely obturate the apical area and accessory canals.



4

Insert the EQ-V Fill's cartridge into the root canal and wait 5 seconds for it to heat.

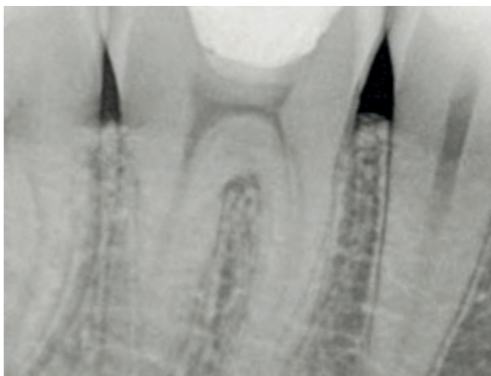
5

Slowly pull on the trigger to back-fill the root canal with gutta-percha to the canal orifice.

6

Condense the hot gutta-percha with a hand plugger to achieve complete obturation of the root canal.

# Clinical cases



Before



After

With the kind permission of  
Dr. Jenner O. Argueta

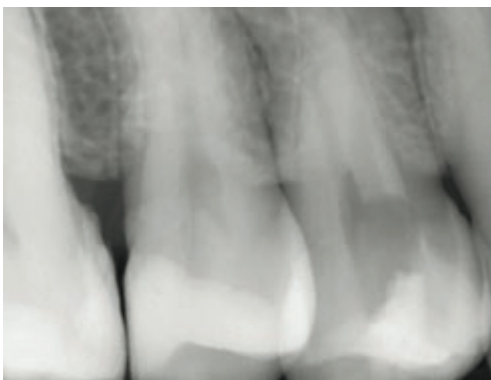


Before

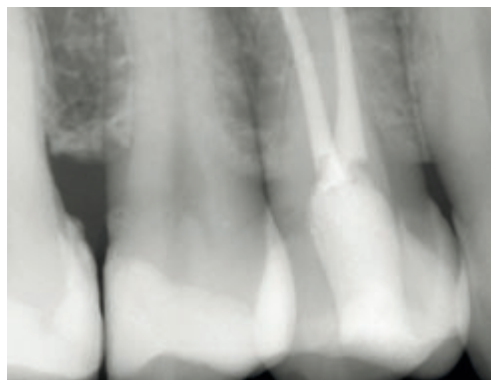


After

With the kind permission of  
Dr. Alvaro Barrios Angulo



Before



After

With the kind permission of  
Dr. Walter Vargas Obando

# EQ Condenser

Maximum flexibility for individual obturation techniques

Hand pluggers can be used with all standard obturation techniques including warm and cold condensation.



## Benefits

- Flexible NiTi tip
- Smooth edge, flat end
- Practical Length marking (5 mm from the tip)
- Anti-crack and rotation prevention
- Color anodizing
- Excellent chemical resistance
- Lightweight

## Specifications

NiTi tip	Marking	N40 ●	N60 ●	N80 ●
	Working length	17 mm	17 mm	17 mm
	Taper	0.02	0.01	0.01
SUS tip	Marking	S80 ●	S100 ●	S120 ●
	Working length	17 mm	17 mm	17 mm
	Taper	0.04	0.02	0.01

# Crown remover

Revolutionary technology  
for crown removal

**NEW**  
US patent



## Benefits

- No more sectioning
- Gentle on root and crown
- Saves time and money

## Useful tips

- 1 The distance between the purchase points must be at least 4 mm
- 2 As shown in the image, it may be necessary to grip the tooth horizontally depending on the shape of the crown

### Application – buccal



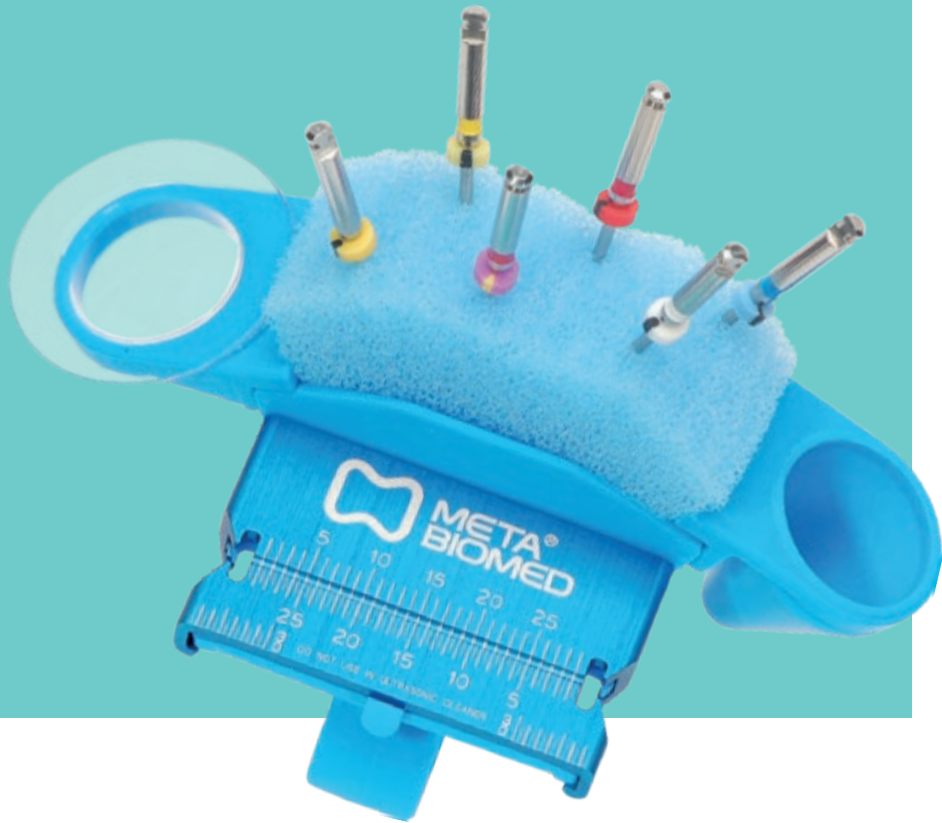
### Application – lingual



# EndoRing® II

Endo-Organizer

Made in the  
**USA**



## Package Contents

1 EndoRing II Assembly  
6 e-Foam Inserts  
1 Metal Ruler  
4 Single Use Cups

## Each Assembly Includes

1 EndoRing Cup  
3 Finger Rings (S, M, L)  
1 Reusable Cup  
1 Adaptor Ring

## Processing Instructions:

EndoRing Cup with Finger Ring  
GelWell Adaptor Ring  
GelWell Cup  
Metal Ruler (if equipped)

**Precleaning Instructions:** Disassemble the metal ruler (if equipped) and any reusable or single use GelWell cup or ring. Rinse all items under tap water to remove gross and visible soils. Use a scrub brush if necessary to remove visible soils. Place items in an ultrasonic bath with only an **enzymatic detergent** prepared to the manufacturer's directions. Fully immerse the items and soak for 1 minute. Then sonicate the parts for 5 minutes and remove and rinse for 15 seconds with tap water. Inspect for any soils and repeat if any soils are visible.

**Autoclave Processing Instructions:** Place items in an FDA approved autoclave pouch/bag. Using a gravity autoclave, process the items at 250° F (121° C) for 30 minutes. Allow the bagged articles to dry for 30 minutes. During autoclaving, place all components near center of the chamber.

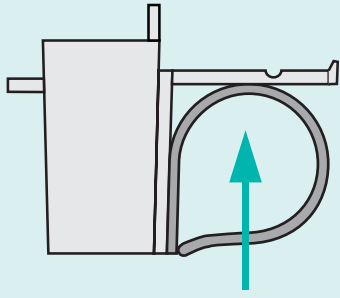
Single Use e-Foam Inserts  
**DO NOT REUSE**

Steam autoclave a new e-Foam insert prior to use. Unused or ultrasonically cleaned files may be placed in the e-Foam insert prior to processing. Autoclaving will not remove bioburden left behind from prior usage. The e-Foam insert, along with files, may be placed in an FDA approved autoclave pouch/bag prior to processing. Do not exceed temperature of 275°F (135°C). To avoid deforming the e-Foam insert, do not load or stack items on top of the e-Foam insert during autoclave processing. Dispose of after each use.

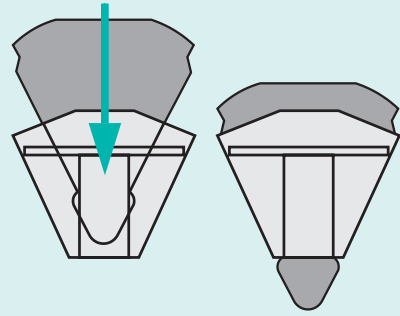
Single Use GelWell Cups  
**DO NOT REUSE**

Always use a new single use GelWell cup for each procedure. Do not autoclave the cups because they will deform and or melt. Dispose of after each use. To disinfect, always use an FDA approved High Level Disinfectant and follow the manufacturer's instructions.

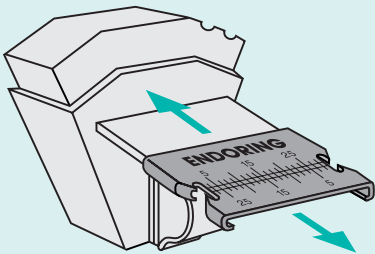
Do not place any components into Surgical Milk, "cold sterilizing solutions" or instrument dips prior to autoclaving. **Only use enzymatic ultrasonic detergents** when precleaning the EndoRing cup and the metal ruler in ultrasonic cleaners.



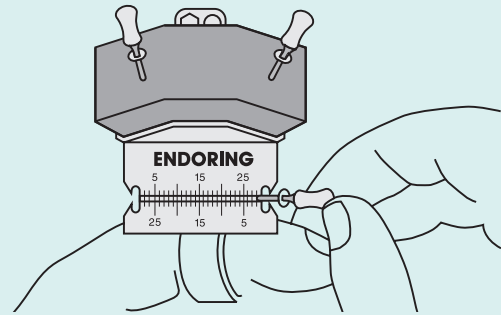
**A** Before assembly, choose one of three ring sizes (small, medium or large) that best fits your index finger. Slide the selected ring into the cup channel located beneath the scale.



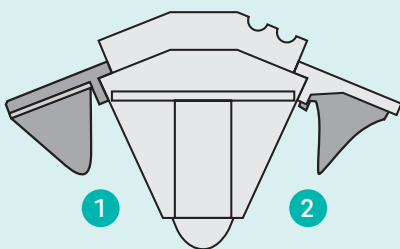
**B** Place the EndoRing e-Foam insert into the EndoRing cup. Pull the e-Foam insert out the bottom of the cup to seat the foam.



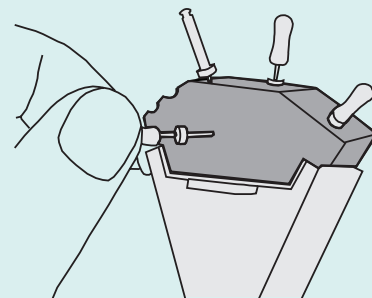
**C** Prior to first use, autoclave the EndoRing cup with the metal ruler attached to the ruler platform. After the first autoclaving, the metal ruler will easily slide on and off the EndoRing cup. For subsequent autoclaving, always remove the metal ruler from the ruler platform. **WARNING:** If the metal ruler gets loose, remove it and autoclave the EndoRing cup for 2 cycles to restore the retention feature.



**D** Arrange hand files, rotary files or other instruments into the e-Foam insert. Remove all file bioburden prior to autoclaving files in the e-Foam insert. When using rubber stops, utilize the stop locks on either the built-in ruler or the detachable metal ruler to increase or decrease the instrument's working length. The rulers perform well with paper points, gutta percha and many other endodontic instruments. To efficiently clean instruments, simply pass them in and out of the e-Foam insert. You can also clean instruments by sliding them through the corrugated area on top of the e-Foam insert. Rubber stops can be safely added to instruments using the ports located on the back of the EndoRing cup.



**E** Attachments can be placed onto the EndoRing cup to hold lubricant or other lubricating gels and liquid. Use either the reusable 2.0ml cup (1) or the single-use clear .65ml cup (2) inserted into the attachment ring. These can be reversibly attached to either side of the EndoRing cup.



**F** The back of the EndoRing cup features the Endo Docking Station™. When held by an assistant, a doctor operating under a surgical microscope, can safely pass files into the expanded area of e-Foam. The area is also ideal for storing used files.





# Biner LC

Light-curing Type Cavity Liner



## Benefits

- Outstanding biocompatibility with dentine and pulp
- Light-curing type cavity liner, extremely hard-curing
- Chemical bonding to adhesives and composites
- Insoluble in water and oral fluids
- Radiopacity
- Flow-on-demand operation and easy dispensing
- Heat barrier

## Areas of application

- Protection of the dental pulp
- Lining under all filling materials
- Protection when applying the total etch technique

### Physical properties

Flexural strength	Over 100 MPa
Sensitivity to ambient light	60 seconds, homogeneous
Linear expansion	2 - 3%
Radiopacity	Yes
Curing depth (40 s)	2 mm

### Components

Biner LC 2 g × 2 syringes  
10 disposable tips

### Composition

Calcium hydroxyphosphate, UDMA, photoinitiator  
Barium aluminium silicate

### Shelf life

3 years from the date of manufacture

# Meta Etchant

Etching gel with 37% phosphoric acid, developed for the etching of dentine and enamel.



## Benefits

- Polymer-thickened gel
- Easy dispensing and application
- No residue, full rinsing
- Thixotropic properties (non-flowing)

## Areas of application

- Conditioning of the surface for dentine and tooth enamel with composites and inlay/onlay

## Clinical cases

### Components

3 g × 3 syringes, 20 tips

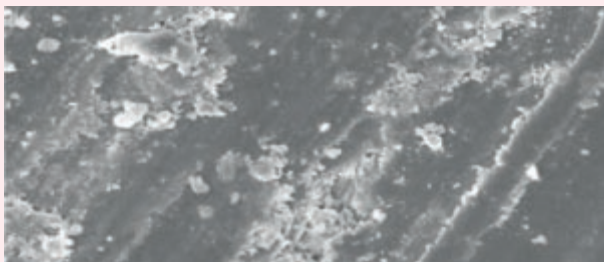
### Composition

Phosphoric acid, H<sub>2</sub>O, xanthan gum

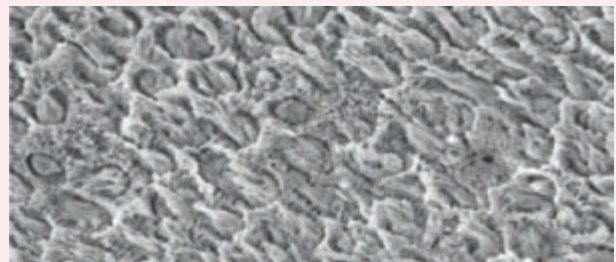
### Shelf life

2 years from the date of manufacture

### Tooth enamel SEM



Before application of Meta Etchant (×2000)



After application of Meta Etchant (×2000)

# Meta P&Bond

5<sup>th</sup> Generation Bonding System



## Benefits

- Superior bonding strength
- 5<sup>th</sup> Generation adhesive
- One-step priming and bonding
- Ethanol based adhesive
- Wet bonding type

## Areas of application

- Bonding for direct composite
- Bonding for porcelain, composite, metal repair, setting amalgam, post
- Bonding for porcelain veneer
- Bonding for amalgam and indirect bonding methods with Metacem adhesive resin cement

### Physical properties

Dentine shear bonding strength 10.75 MPa

Tooth enamel shear bonding strength 30.76 MPa

### Components

Meta P&Bond 5g

10x micro-brushes

### Composition

Bis-GMA, PMGDM, 2-hydroxyethyl methacrylate, ethyl alcohol

### Shelf life

2 years from the date of manufacture

# Nexcomp

Nano-Hybrid Composite Resin



## Benefits

- Low 1.6% shrinkage for superior marginal integrity, various shades
- Filled with 40 nano-sized filler for excellent polishability
- Optimal handling – excellent sculptability for restoring natural shape and function
- Non-slumping, non-sticky

## Areas of application

- Class I, II, III, IV, V restorations
- Diastema closures
- Direct veneering
- Composite and porcelain repairs

### Components

#### Nexcomp kit:

- 4 g × 7 syringes (A1, A2, A3, A3.5, B2, A2E, B2E)
- Meta P&Bond 5g
- Meta Etchant 3g

#### Nexcomp Refill:

- 4 g × 1 syringe (A2E, B2E, A1, A2, A3, A3.5, A4, B1, B2, B3, C2, C3, D2, D3, TL, WT, OP, OA2, OA3)g

### Composition

Bis-GMA, UDMA, Bis-EMA

Borosilicate glass

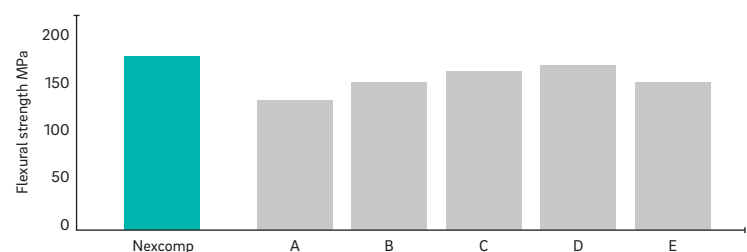
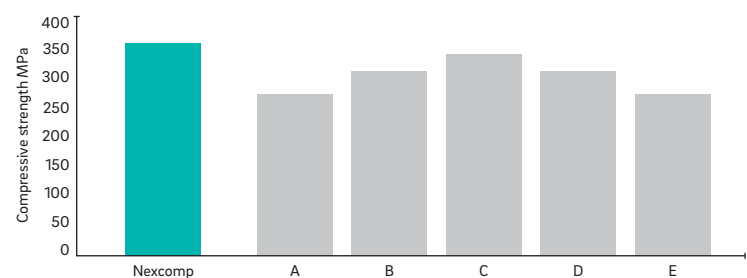
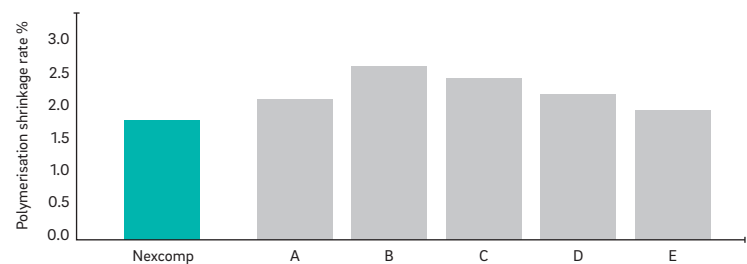
### Shelf life

3 years from the date of manufacture

### Nexcomp

Polymer-based principle organic components	Bis-GMA, Bis-EMA, urethane dimethacrylate, triethylene glycol dimethacrylate
Dimension range of inorganic filler particles	0.04 to 0.7 $\mu\text{m}$
Volume percent of the total amount of inorganic filler particles	54 vol. %
Recommended external energy source	Necessary specifications for the light-curing device: standard dental halogen/LED lights with a light intensity of over 400 $\text{mW}/\text{cm}^2$ and a wavelength between 430-480 nm

### Physical and chemical properties



# Nexcomp Flow

Nano Hybrid Flowable Composite Resin



## Benefits

- Low viscosity, light-curing, radiopaque flowing composite resin for minimally invasive cavity preparations.
- With 40 nanofillers for excellent polishing capacity
- Flow-on-demand operation
- Outstanding radiopacity
- Available in 14 shades including opaque and transparent
- No sinking or running out

## Areas of application

- Restoration of the invasive cavity
- Hole and fissure sealing
- Base and liner for direct restoration
- Repair of temporary acrylic materials
- Repair of indirect aesthetic restorations

### Components

Nexcomp Flow set:  
· 2 g × 5 syringes (A2, A3, A3.5, B2, B3), each with 20 disposable tips

Nexcomp Flow Refill:  
· 2 g × 2 syringes (A1, A2, A3, A3.5, A4, B1, B2, B3, OA2, OA3, C2, D2, WT, TL), each with 10 disposable tips

### Composition

Bis-GMA, UDMA, Bis-EMA TMPTMA

Borosilicate glass

### Shelf life

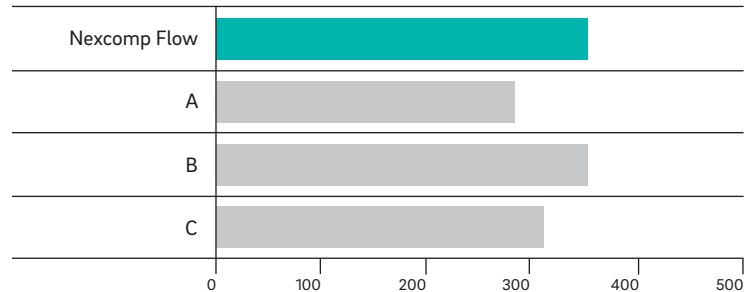
3 years from the date of manufacture

### Nexcomp Flow

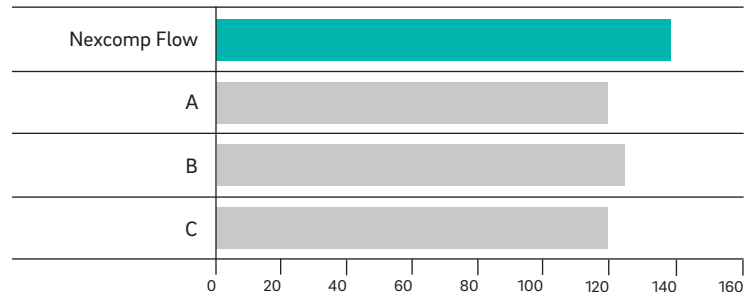
Polymer-based principle organic components	Bis-GMA, Bis-EMA, urethane dimethacrylate, triethylene glycol dimethacrylate
Dimension range of inorganic filler particles	0.04 to 0.7 μm
Volume percent of the total amount of inorganic filler particles	37 vol. %
Recommended external energy source	Necessary specifications for the light-curing device: standard dental halogen/LED lights with a light intensity of over 400 mW/cm <sup>2</sup> and a wavelength between 430-480 nm

### Physical and chemical properties

#### Compressive strength (MPa)



#### Flexural strength (MPa)



# Metacem

Dual-cured  
Resin Cement



## Benefits

- Easy to use for indirect cosmetic restorations
- high resistance to compressive force
- Provides dual-curing for heavily shaded, thick or opaque closures
- 5 shades correspond with shade guide
  - A1, A3, B2, TL (Translucent white), OP (Opaque)

## Areas of application

- Crowns and bridges (ceramic, composites, porcelain)
- Inlay/onlay sealing
- Bonding for porcelain veneers

### Components

#### Metacem set:

- 2 dual syringes (A3, transparent white, 9 g each)
- P&Bond 5 g
- 20 mixing tips
- Spatula
- 10 adhesive brushes
- etchant 3 g
- 20 etchant disposable tips
- mixing pad paper

#### Metacem Refill:

- 1 dual syringe (A1, A3, B2, transparent white, opaque, 9 g each)

### Composition

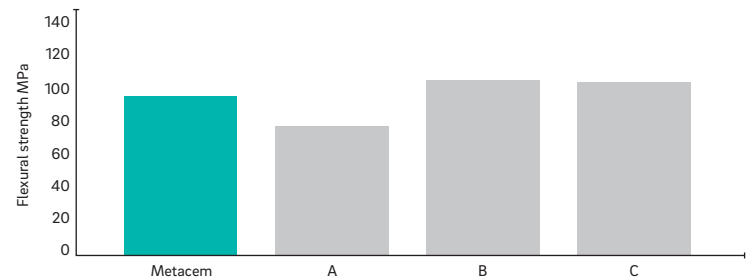
Base - Bis-GMA, DHEPT, borosilicate glass

Catalyst - Bis-GMA, TEGDMA, borosilicate glass

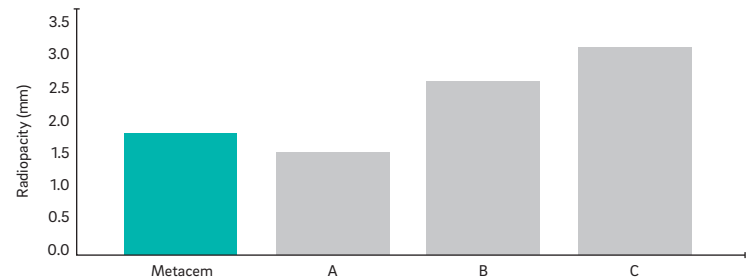
### Shelf life

2 years from the date of manufacture

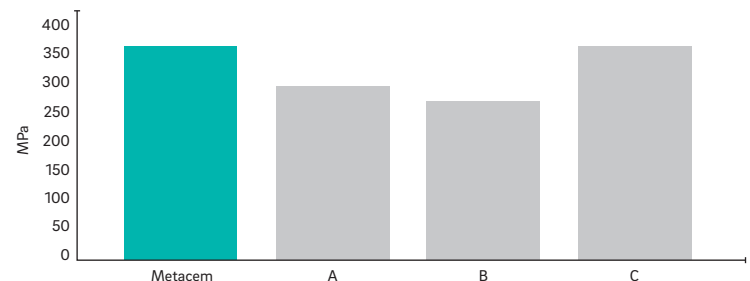
### Physical and chemical properties



- Working time: 2 minutes
- Setting time: 5 minutes
- Flexural strength: 99 MPa
- Radiopacity: 2.33 mm Al/mm



- Film thickness: <math><21 \mu\text{m}</math>
- Water absorption:  $29.3 \mu\text{g}/\text{mm}^3$
- Water solubility:  $2.3 \mu\text{g}/\text{mm}^3$



# MD-Temp Plus

Hydraulic temporary restoration



## Benefits

- Simple application and removal
- Hermetic cavity sealing
- Excellent stability with suitable compressive strength

## Areas of application

- Temporary cavity filling

### Components

4x white or pink paste in a glass container (40 g, 30 g, 20 g)

Dimensions: 40 × 35 × 39 mm

Weight: 52.5 g, 42.5 g, 32.5 g

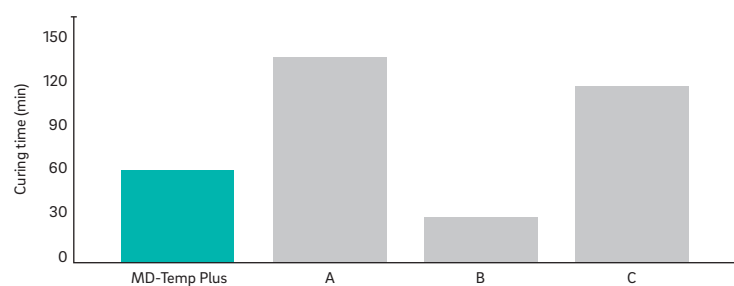
### Composition

Copolymer

Zinc oxide

Calcium sulphate

### Physical and chemical properties



### Shelf life

3 years from the date of manufacture

# NexTemp HV/NexTemp LC

Light-curing temporary filling



## Benefits

- High elasticity
  - Tightness for margin sealing
  - Easy application and removal
  - Excellent stability when set
  - Proper crush strength

## Areas of application

- Temporary treatment of the prepared cavity (1-6 days)
- Temporary cavity filling

## Application

### Components

NexTemp HV: 3 g × 3 syringes (TL, blue)

NexTemp LC: 2 g × 3 syringes, 10× disposable tips (TL, blue, yellow)

### Shelf life

NexTemp HV: 2 years from the date of manufacture

NexTemp LC: 3 years from the date of manufacture



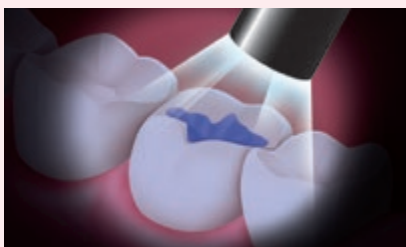
1 Preparation



2 Cleaning and drying



3 Application



4 Light-curing



5 Polishing

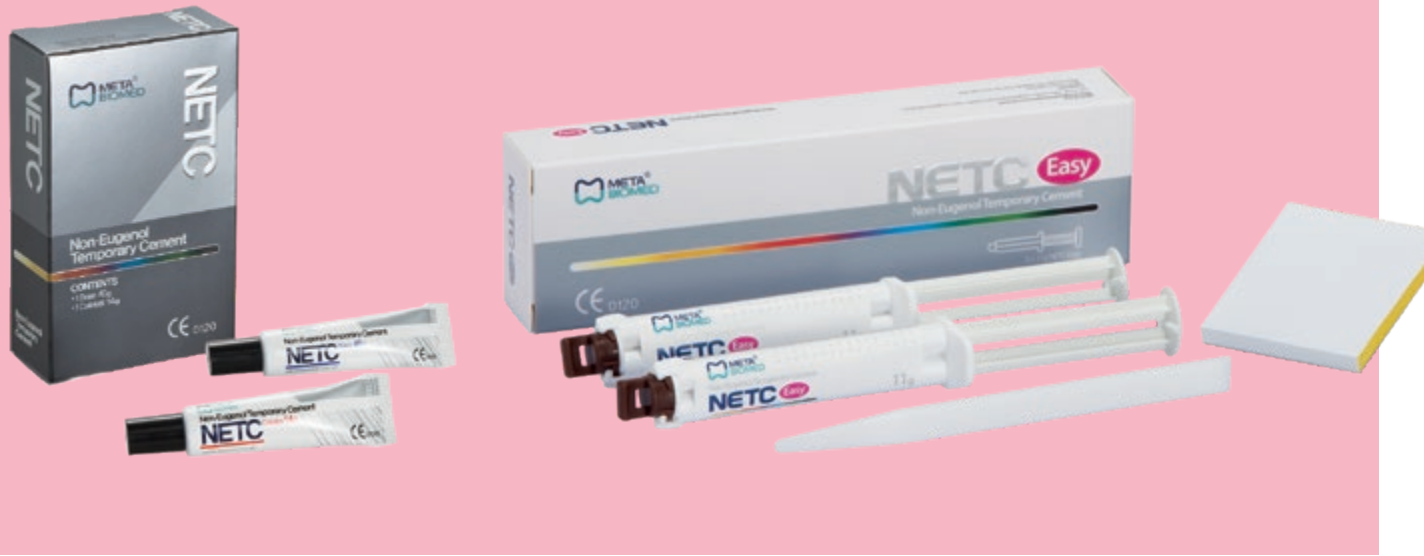


6 Removal of surplus material



# NETC

Non-Eugenol Temporary Cement



## Benefits

- Paste in a tube
- Working time: 1.5 minutes
- Setting time: 6 minutes
- Particularly suitable for patients with sensitive reactions to eugenol

## Areas of application

- Temporary sealing of crowns and bridges

### Components

Type of tube: Base 40 g, catalyst 14 g, mixing pad

Dual syringe design: 2 × 11 g each, 2 mixing tips each

2 caps each, mixing pad

### Composition

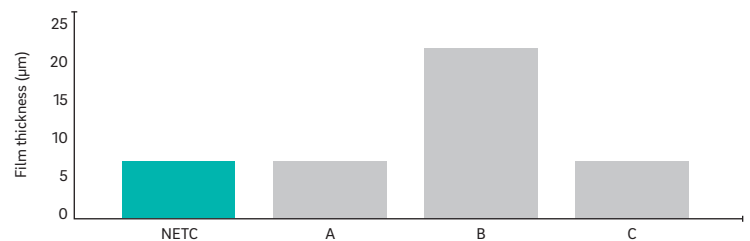
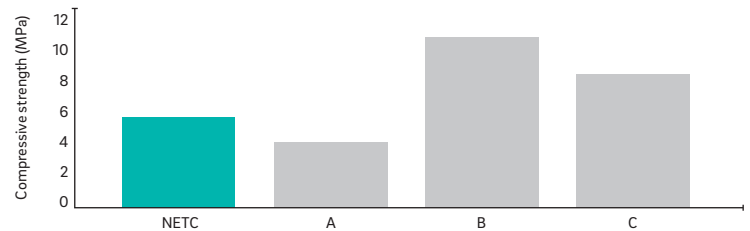
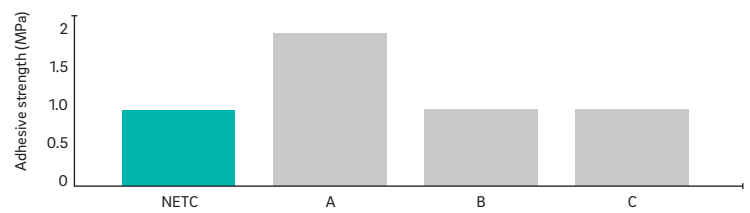
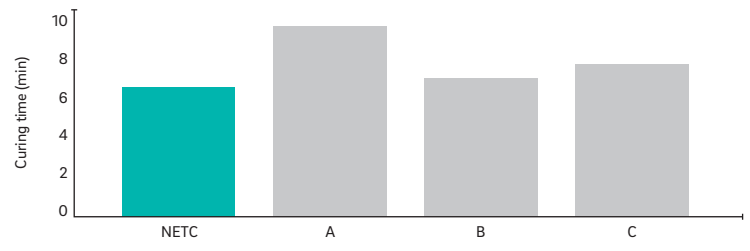
Base – zinc oxide and mineral oil

Catalyst – resin and nonanoic acid

### Shelf life

2 years from the date of manufacture

### Physical and chemical properties



\*NETC meets the requirements of ISO 3107 (type I, class 2B)

# Glare

Polywave Curing Light



## Benefits

- deep, uniform curing
- compatible with all kinds of photo initiators
- 5 programmes
- high intensity & focused light

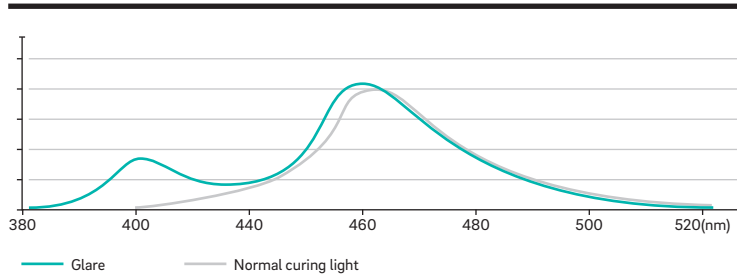
## High Intensity & Focused light

- High Intensity of 1800mW/cm<sup>2</sup>
- Enables deep and uniform curing of restoration

## Dual Wavelength LED

- wide usability
- Usable for all kinds of materials with 405nm & 460nm peak wavelength LED

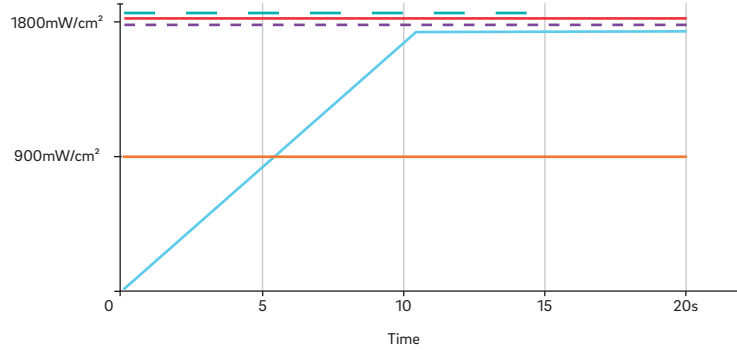
### Relative light intensity



# 5 types of light curing

- User can select curing type according to treatment
- High, Low, Soft start & Pulse mode
- flexible curing time

## light curing modes



- Ortho mode**  
Special mode for bracket attachment.  
5 cycles of 2 sec curing followed by 1 sec rest.
- High mode**  
Quick polymerization with high intensity.
- Pulse mode**  
Special mode to avoid polymerization shrinkage.
- Low mode**  
Safe polymerization with low intensity.
- Soft start mode**  
Special mode to avoid polymerization shrinkage.

# Special Features for user and patient



- 1**
- Slim head & 330° head twist
  - comfortable to the patient
  - easy access to posterior teeth



- 2**
- Angled hand piece



- 3**
- OLED Screen
  - excellent readability



- 4**
- High capacity battery
  - Ensures long operation time (with 2400 mAh)

### Specifications

Model	Glare
Wavelength	400-490 (nm)
Screen	OLED
Power source	Lithium-ion-battery 2400mAh
Light source	High power dual wavelength LED
Weight	approx. 130g

### Content

Type	Glare
Hand piece	1
Charger	1
Adapter & Power Cord	1
Battery	1 (2400 mAh)
Disposable cover	2 (100 pcs/pack)
User manual	1

# MD-flex™

Impression material made from polyvinyl siloxane



## Benefits

- Impressions of crowns, bridges or partial dentures
- Accurate impression without bubbles because of hydrophilic property
- Gypsum model will be effectively reproduced without transformation due to an excellent reproducibility and volume stability
- Biocompatibility (ISO10993)
- Compatible with other polyvinyl siloxane impression materials
- Easy to mix by auto-mixing type

## Areas of application

- Cavity impressions of veneers, inlay, onlay, crowns, bridges or partial dentures

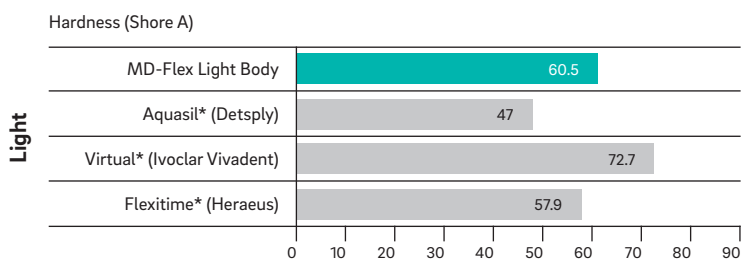
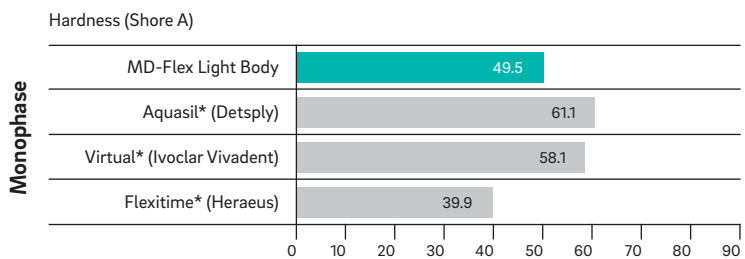
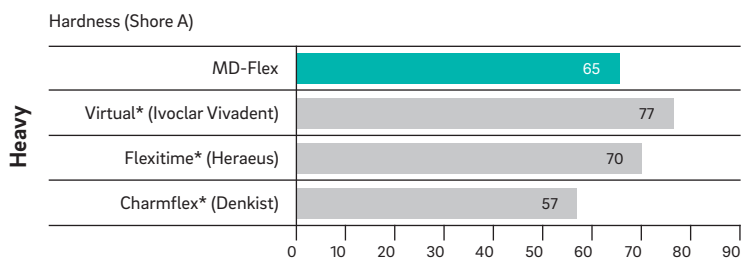
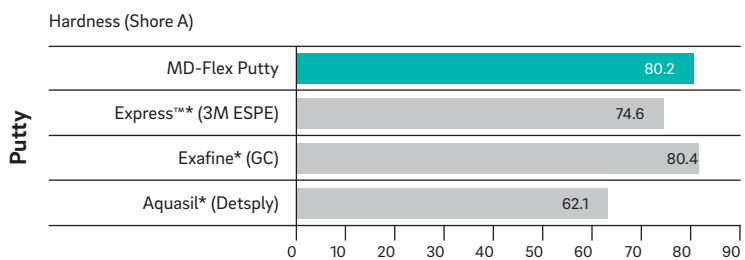
### Specifications

Type	Contents
<b>Putty</b>	Base 450 g, catalyst 450 g, 2 measuring spoons each
<b>Heavy</b>	2 × 50 ml cartridges, each with 6 Automix tips Large pack 4 and 10 cartridges (without mixing tips)
<b>Monophase</b>	2 × 50 ml cartridges, 6 Automix tips, 6 intraoral tips, large pack 4 and 10 cartridges (without mixing tips, oral tips)
<b>Light</b>	2 × 50 ml cartridges, 6 Automix tips, 6 intraoral tips Large pack 4 and 10 cartridges (without mixing tips, oral tips)

### Shelf life

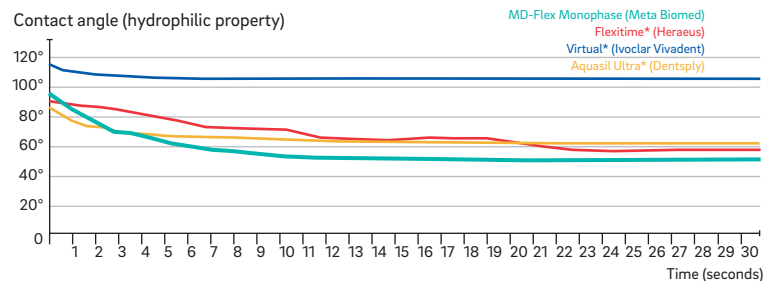
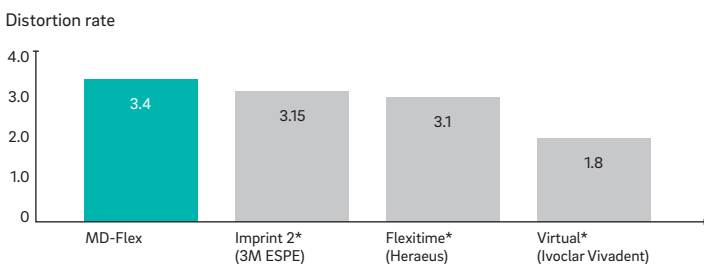
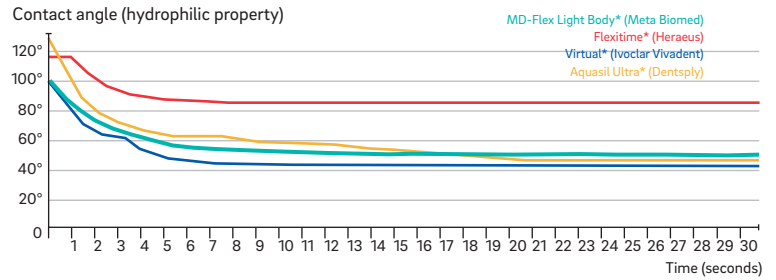
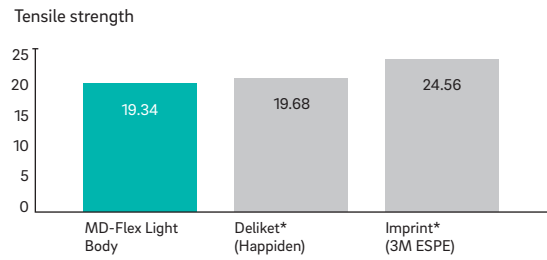
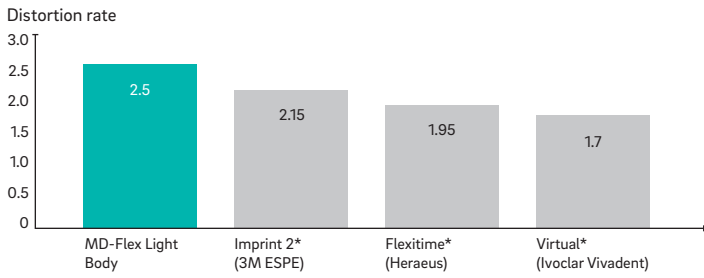
2 years from the date of manufacture

### Physical and chemical properties





\*Not a Meta Biomed trademark



# NexSil Bite

Bite registration



## Benefits

- The fast-setting material offers rock-hard adjustment for excellent occlusal recordings
- Due to the high final hardness of 90 Shore A and the high fracture toughness, the material is easy to cut and grind
- Provides excellent results when recording images with intraoral scanners
- Biocompatibility (ISO 10993)
- Simple mixing thanks to automatic mixing mode

## Areas of application

- Used to produce an occlusion in the mouth

## Physical properties

Working time (23°C)	Setting time (23°C)	Shore A
40 seconds	90 seconds	90

## Components

Cartridges 50 ml × 2

## Shelf life

3 years from the date of manufacture

# Providing quality. Taking responsibility.



## GL sponsoring

The Meta Biomed philosophy is not exclusively about delivering the highest possible product quality; we also aim to improve the quality of life for many people. We strive for success and wish to share this with others. And this is only possible thanks to your help. We would be delighted to provide you with details of how, together with us, you can support aid organisations or find ways for Meta Biomed to support your organisation. We are always open to new suggestions and ideas. We look forward to hearing from you!

## Sponsorship

Meta Biomed has set up a sponsorship programme for children in need. As part of this programme, every member of the Meta Biomed family sponsors a child in need. Regular contact is maintained through letters, e-mails and pictures. Our responsibility towards these children goes hand in hand with our sense of duty vis-à-vis our company.



## Non-profit-organisations

Meta Biomed is proud to be able to promote and support its partners' aid programmes. Together with Dr. Jenner and ADIZ-ONG from Guatemala we donated 10% of our profits from the Greater New York Dental Meeting for charitable work. And this is just the start. We are already looking forward to getting involved in more exciting projects in the future!



## Donations

We are always on the look-out for projects and organisations worthy of support. And we are not just focused on monetary donations. For example, we provide our products free of charge to our friends and partners at the Medical Faculty of the University of California in San Diego. We also support the Memorial Health Foundation and the Anderson Cancer Institute. Do you also wish to be supported by Meta Biomed? – Please do not hesitate to get in touch!







# Sorbone

100% B-TCP



## Benefits

- Outstanding osteoconductivity
- Accelerates bone regeneration and activates healing
- Excellent biocompatibility (no biological rejection, no disease transmission)
- Precise and problem-free implantation
- Easy to use
- Porosity: 55-60%

## Areas of application

- Periodontal defects
- Intrabony defects
- Ridge augmentation
- Implant preparation/placement at extraction sites
- Sinus lift
- Cystic cavities

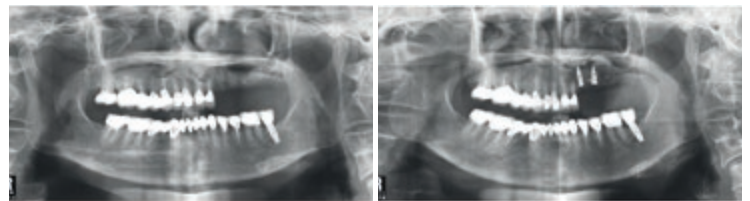
### Pack details – vials

Size	Weight			
	0.25g	0.5g	1.0g	2.0g
0.3-0.5 mm	0.25g	0.5g	1.0g	2.0g
0.5-1.0 mm	0.25g	0.5g	1.0g	2.0g
1.0-2.0 mm	0.25g	0.5g	1.0g	2.0g
2.0-4.0 mm	0.25g	0.5g	1.0g	2.0g

### Pack details – syringe

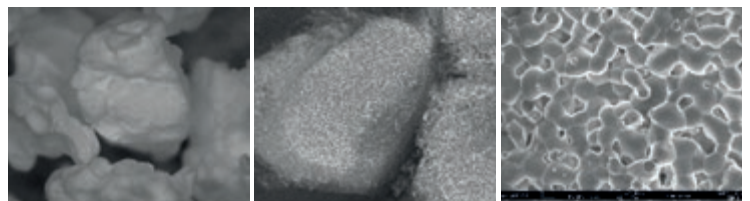
Size	Weight			
	0.25 cc	0.5 cc	1.0 cc	2.0 cc
0.3-0.5 mm			1.0 cc	2.0 cc
0.5-1.0 mm	0.25 cc	0.5 cc	1.0 cc	2.0 cc
1.0-2.0 mm	0.25 cc	0.5 cc	1.0 cc	

### Patient case



X-ray image before the implant (left) and after the implant (right)

### Sorbone SEM observation

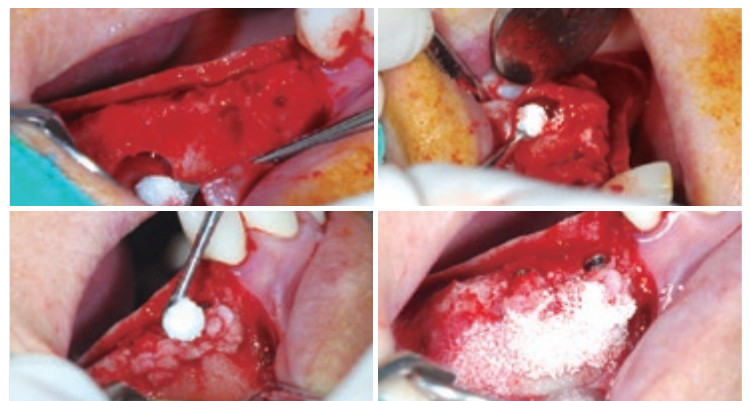


Sorbone chipform

Sorbone internal structure

Sorbone surface: Connected nanopores and micropores

### GBR (flap opening)



# SorGuide

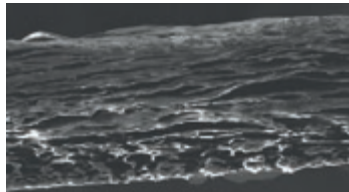
Absorbable periodontal regeneration induction membrane  
In CE certification process



## Benefits

### Safety materials:

Highly purified type-I collagen membrane derived from porcine tissue



### Excellent Adhesion:

Excellent adhesion to bone loss section with good flexibility

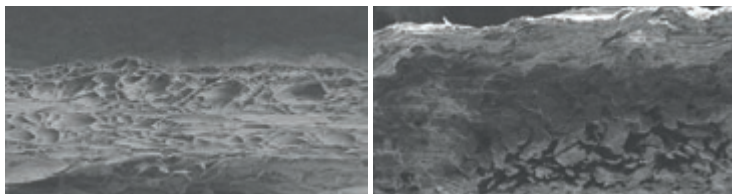


### High porosity:

Outstanding biocompatibility (no biological rejection, no disease transmission)

SorGuide™ ≈ 70%

B product ≈ 50%



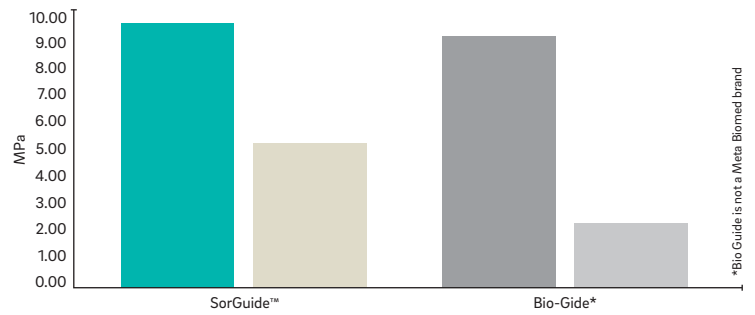
### Size

TG-1 (15 × 20 mm)    TG-2 (20 × 30 mm)    TG-3 (30 × 40 mm)

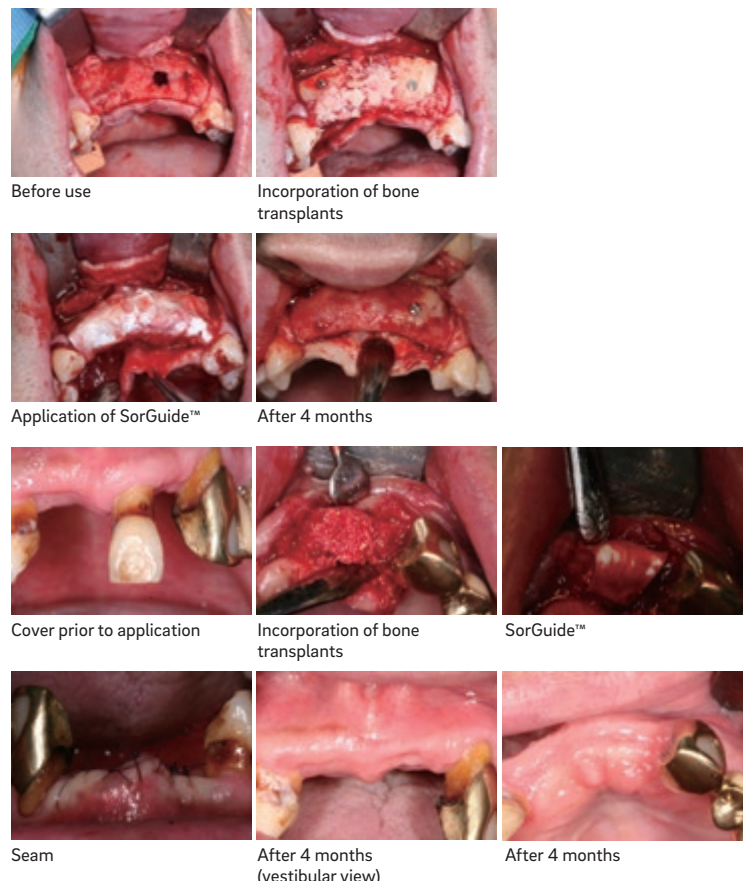
### Comparison – duration of biological degradation

Brand	Duration of biological degradation
SorGuide™	3-5 months
B product	2-4 months

### Comparison – tensile strength



### Clinical cases



# Monotex

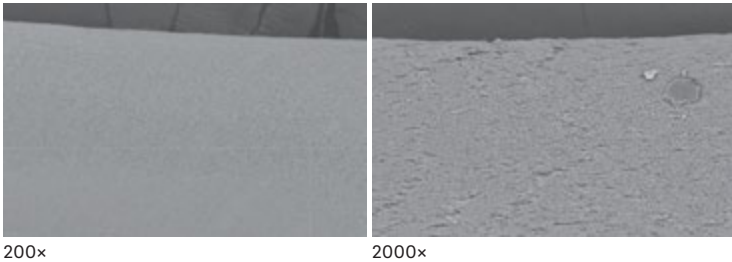
Monotex is an excellent suture choice for dental bone grafting and implant procedures. It's clean, comfortable and has little to no package memory, which results in excellent handling and knot security. Our PTFE (Polytetrafluoroethylene) was designed to be an ultra-soft, high density surgical suture. The monofilament construction and low surface porosity reduces bacterial migration along the suture line.



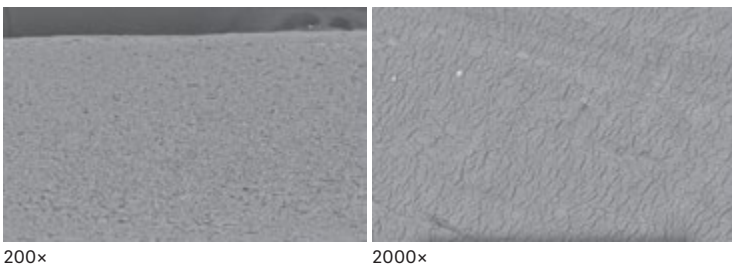
## Our Sutures Smooth Surface

Monotex is less porous than other PTFE sutures. The proprietary monofilament construction reduces the potential for bacterial migration into the surgical site and, unlike most monofilament sutures, its softness makes it comfortable for patients.

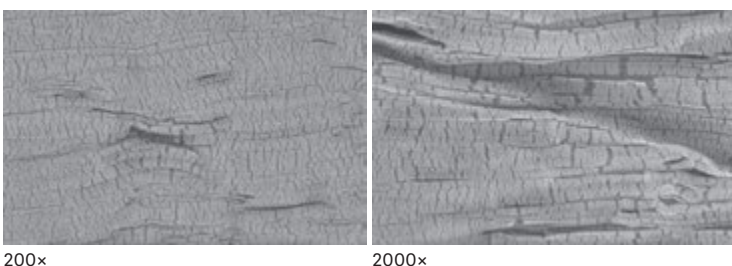
### Monotex



### Competitor A



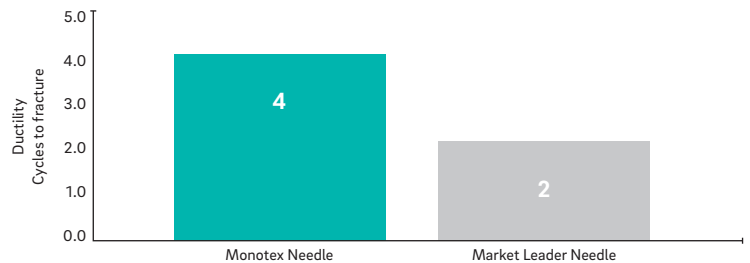
### Competitor B



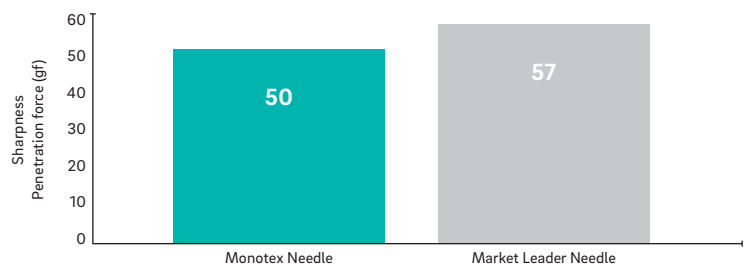
## Our Needles Sharper & Stronger

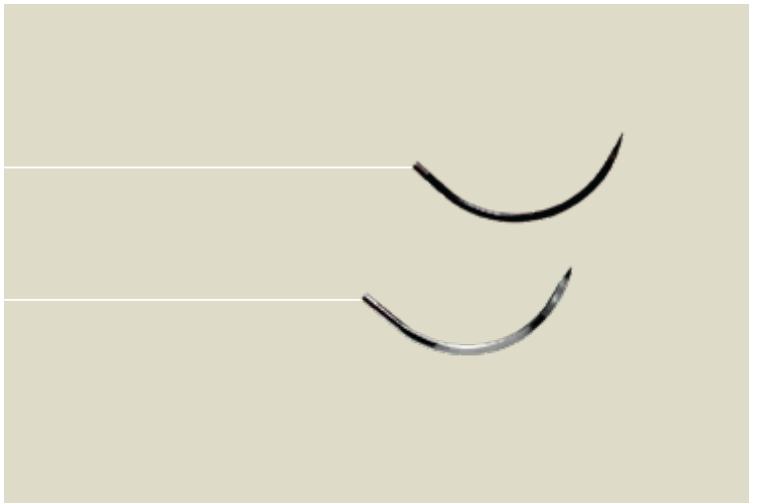
Our needles are made from 300 series stainless steel, which has greater tensile strength, higher ductility and less brittleness than 400 series stainless steel.

### Stronger Needles – 100% increase in ductility



### Sharper Needles – 12% less force needed





FS - 2	FS - 3	P - 3	PS - 2	TF
Reverse Cutting	Reverse Cutting	Premium Reverse Cutting	Premium Reverse Cutting	Taper Point
19 mm 3/8 Circle	16mm 3/8 Circle	13mm 3/8 Circle	19mm 3/8 Circle	13mm 1/2 Circle

## Cobra Black® vs. Standard Needles Better Contrast & Visibility

The Cobra Black® needle uses a proprietary process that enhances visibility, especially in blood and smaller surgery sites. The Cobra Black® needles eliminate the hindering glare from the operating room lighting. The needles are more distinguishable than the standard stainless steel needles.

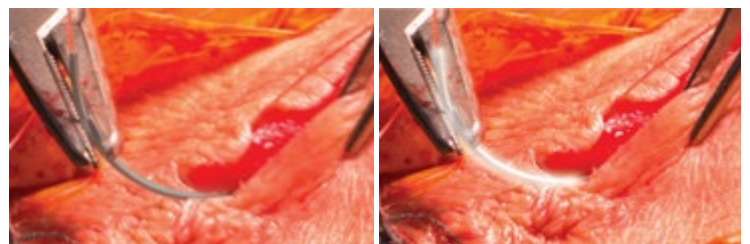
### Needle Glare Reduction



CobraBlack®

Bright Steel

### Better Contrast against Tissue



CobraBlack®

Bright Steel

## Ordering Codes

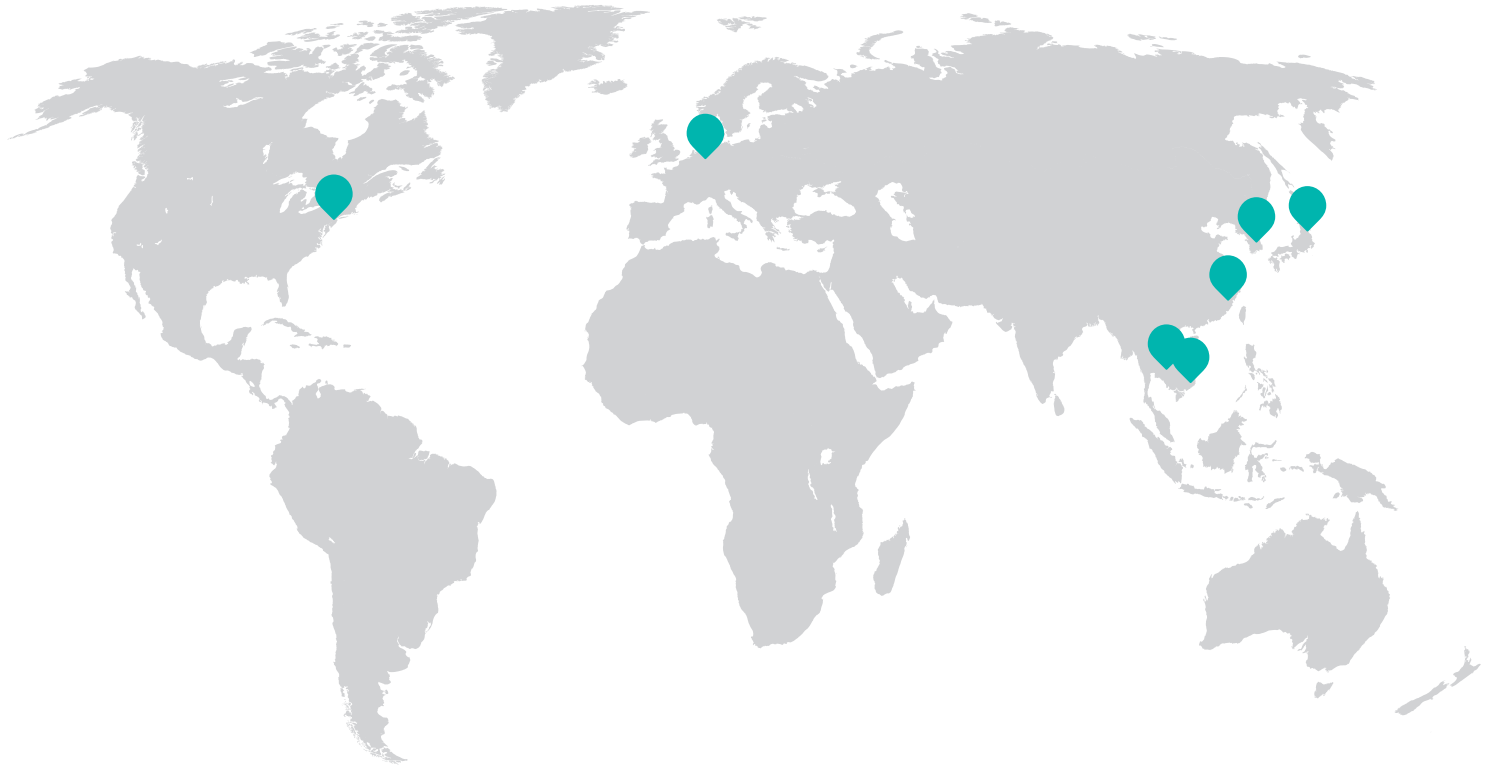
### Standard Needle

Code	Size	Length	Needle
T8000	3-0 USP 2.0 EP	18" 45 cm	FS-3
T8001	4-0 USP 1.5 EP	18" 45 cm	FS-3
T8204	4-0 USP 1.5 EP	18" 45 cm	TF
T8604	4-0 USP 1.5 EP	18" 45 cm	P-3
T8664	2-0 USP 3.0 EP	18" 45 cm	FS-2
T8665	3-0 USP 2.0 EP	18" 45 cm	FS-2
T8682	4-0 USP 1.5 EP	18" 45 cm	PS-2
T8698	5-0 USP 1.0 EP	18" 45 cm	P-3
T8695	6-0 USP 0.7 EP	18" 45 cm	P-3

Other PTFE suture and needle combinations available upon request.

### CobraBlack® Needle

Code	Size	Length	Needle
T8000C	3-0 USP 2.0 EP	24" 60 cm	FS-3
T8001C	4-0 USP 1.5 EP	24" 60 cm	FS-3
T8204C	4-0 USP 1.5 EP	24" 60 cm	TF
T8604C	4-0 USP 1.5 EP	24" 60 cm	P-3
T8664C	2-0 USP 3.0 EP	24" 60 cm	FS-2
T8665C	3-0 USP 2.0 EP	24" 60 cm	FS-2
T8682C	4-0 USP 1.5 EP	24" 60 cm	PS-2
T8698C	5-0 USP 1.0 EP	24" 60 cm	P-3
T8695C	6-0 USP 0.7 EP	24" 60 cm	P-3



**META BIOMED EUROPE GmbH (GERMANY)**  
 Wiesenstrasse 35  
 45473 Mülheim an der Ruhr  
 Tel +49 208 309 91910  
 Fax +49 208 30 991 999  
 europe@meta-europe.com



**META BIOMED CO., LTD (SOUTH KOREA)**  
**HEAD OFFICE**  
 270, Osongsangmyeong 1-ro, Osong-eup,  
 Heungdeok-gu, Cheongju-si, Chungcheongbuk-do,  
 28161 Republic of Korea  
 Tel +82-43-218-1981  
 Fax +82-43-217-1984  
 dental@meta-biomed.com



**META BIOMED VINA CO., LTD. (VIETNAM)**  
 Lot N-1B, Road No 4 Long Hau Commune Zone  
 Expansion, Hamlet 3, Long Hau, Commune Can Giuoc  
 Distric, Long An Province, Ho Chi Minh, Vietnam  
 Tel +84-08-3620-6672



**META BIOMED CO., LTD. (JAPAN)**  
 3F 32 Shibakouen Bldg. 3-4-30 Shibakouen,  
 Minato-ku, Tokyo 105-0011, Japan  
 Tel +81-3-5408-5688  
 Fax +81-3-5408-5812  
 metabiomed.jp@gmail.com



**META BIOMED INC. (USA)**  
 3015 Advance lane Colmar, PA 18915  
 Tel +1-267-282-5893  
 Fax +1-267-282-5899  
 america@metabiomed-inc.com



**META BIOMED CO., LTD. (CHINA)**  
 Room. 10A75, No2299, WestYan `an Road,  
 Changning District Shanghai China/ 200336  
 Tel +86-21-6280-6286  
 Fax +86-21-6280-6282  
 chninfo@vip.sina.com



**META BIOMED CO., LTD. (CAMBODIA)**  
 Path, village Trapeng Tleng, Sangkat Chaum Chao,  
 Khan Porsenchey. Phnom Penh Cambodia  
 Tel +85-23-969-051  
 Fax +85-23-969-050



