

TREATMENT AUXILIARIES
INFECTION CONTROL

DENITAI CATAILOG

WHAT DO YOU CALL A CONVICTION
THAT EVERYTHING CAN ALWAYS BE
A LITTLE BETTER, EASIER AND MORE
RELIABLE?

WE CALL IT
Upgrade Dentistry

With expertise and enthusiasm, COLTENE turned this claim into reality. We know exactly our end customers needs and want and work tirelessly to provide them with innovative and smart solutions.

This is not an empty promise, it is our mission. Upgrading Dentistry makes dental treatments more effective, safe and economical for dental professionals and patients.

Better Quality. Better Reliability. Better Practise.



www.coltene.com

**INDICATION
PRODUCT TYPE**

**FIELD OF APPLICATION
PROPERTIES**

PRODUCT NAME

MOISTURE CONTROL

COTTON

Dental Rolls	Standard For sensitive patients	Luna, Cotton-roll Luna Gold, Parotisroll,	8 9
Dental Roll Dispensers	Hygienic storage and dispensing of dental rolls	Lunamat, Roll-o-mat, Parotimat	10
Cotton Pellets	Drying of cavities, application of active agents	Cotton Pellets	11
Cotton Pellets Dispenser	Hygienic storage and dispensing of cotton pellets	Solomat-N, Solomat-Click	11

DENTAL DAM

Dental Dam	Latex powdered	Dental Dam Latex ready cut or on roll Fiesta Dam with fruit scent	12 13
	Latex powderfree	Elasti-Dam	13
	Latex free	Non Latex Dental Dam, Flexi Dam, Framed Flexi Dam	13
Dental Dam Clamps	Standard	Winged Clamps, Wingless Clamps	16
	Color coded clamps	Fiesta Dental Dam Clamps	17
	Clamps for special needs	Brinker Clamps for tissue retraction Tiger Clamps for fractured teeth	18
Accessories	Marking	Template, Stamp	19
	Applying Dental Dam	Metal- or Plastic frame, Plastic frame foldable	19
	Punching	Punch (6er Punch, 8er Punch)	20
	Placing	Clamp Forceps	20
	Elastic stabilizing cord for fixation	Wedjets	20
Dental Dam Kits	Protection	Dental Dam Napkins	20
	Everything needed for using dental dam in one set – ideal to start with	Standard Kits without punch and forceps Complete Kits with punch and forceps	22
		Simple Dam Kits	

ASPIRATOR TIPS

Surgical aspirator tips	For use in general oral surgery	Surgitip	26
Microsurgical aspirator tips	For use in microsurgery, specially designed for use with microscopes or loupes	Surgitip-micro	26
Endodontic aspirator tips	For drying the root canal	Surgitip-endo	26
Universal aspirator tips	Non sterile Aspiration of large volumes	Aspirator Tips non sterile Concorde II	27
Accessories	For connecting the aspirator tips with different aspirating equipment	Adapter, Double Adapter	27

**INDICATION
PRODUCT TYPE**

**FIELD OF APPLICATION
PROPERTIES**

PRODUCT NAME

SURGICAL SUNDRIES

Gelatine sponges	Haemostasis	Gelatamp forte, Gelatamp	30
Surgical Sutures	Needle-suture combination	Sintraumal	31
Gauze impregnated with iodoform	Aseptic wound tamponing and drainage	Jodoform Tamponade	31
Sterile Tamponade	Drainage	Gauze strip	31
Gauze Swabs	Swab and dry wounds	Roeko-Swab	31
High frequency electrosurgery system	Haemostasis, contour tissue, frenectomy	PerFect TCS II	32
Magnetostrictive Ultrasonic Scaler	Tooth cleaning	BioSonic US 100R	33

INFECTION CONTROL

Gloves	Latex free	Rexam non latex powderfree, Glovyl	36
Face masks	Adsorbs odours, fluid resistant	Protecta active carbon	36
	Mask with ear loops	Protecta Quick non latex, Protecta Quick	36
	Tie-on face mask	Protecta	36
Patient bibs	With absorbent cellulose coating	Simplex-Plus Maxi, Simplex-Plus	37
	Fluid resistant patient bib	Simplex	37
	Washable patient bib	Denta	37
Headrest covers	Hygienic protection of dental chair's headrest	Headrest covers on a Roll, Non-woven for KaVo, for Ritter, Filterpaper	38
Sterile covers	Sterile covers for trays and tubes	Steri-Quick, Steri-sleeve	38
	Sleeves for tubes non sterile	Sleeves for tubes	38
Ultrasonic Cleaning System Instruments	Instrument cleaning	Ultrasonic cleaning system (UC 50DB, UC125, UC 150 , UC 300) Cleaning solutions and Accessories (BioSonic UC 30, UC31, UC 32, UC 34, UC 38/42, UC39)	39
Disinfection	Surface disinfection	BioSonic WIPEOUT	44

OCCCLUSION VERIFICATION

Paper	Thick test material	Articulating Paper 200µ	46
Paper and Silk	Medium fine test material	Articulating Paper 80µ und 40µ	46
Foil	Fine test material	Occlusion Foil 12µ	46
		OkkluFoil+ 12µ	47
		Shimstock Foil 8µ	47
Dispenser, Tweezers and Sprays	Hygienic storage and treatment auxiliaries	Foil Dispenser, Clamping Tweezers, Okklu-top Spray,	47

Cotton

Dental Dam Clamps

Dental Dam

Treatment Auxiliaries

COTTON

Sophisticated fully automated production at the Langenau site in Southern Germany ensures precision and the highest quality for ROEKO cotton wool products. Consumption in the dental practice is therefore low – thus ensuring trouble-free working and perfect results. Besides quality, labour saving is always in focus for the dentist and the patient's convenience too. That is why ROEKO cotton products are unusual and versatile and fulfil very specific requirements.

Luna Gold – tissue friendly dental roll

Luna Gold has a mucophile cover and can therefore be removed without wetting the dental roll beforehand. There is no risk of tissue inflammation.

Cotton Pellets – uniform in shape and size

The fully automated production of the ROEKO cotton pellets guarantees their uniform shape and size and thus, reliability.

Parotisroll – with spring action inside

Parotisroll fixes itself and placed correctly on the parotis gland reducing the patient's saliva flow.



DENTAL DAM

Rubber dam allows individual teeth or entire rows of teeth to be isolated and therefore an aseptic, completely dry working area can be created. The unobstructed view of the treatment site saves treatment time and the rubber dam also protects against injuries to the mucous membranes and prevents swallowing of endodontic flushing solutions and instruments. Under the two quality brands - HYGENIC and ROEKO – COLTENE offers all materials needed for professional use of rubber dam. Alongside standard materials, various special products simplify treatment of children, allergy sufferers or the use of rubber dam in medically complicated cases.

Elasti-Dam – extra elastic powderfree latex dam

Easy application thanks to high elasticity. Low allergenic latex protein stress for the patient and practice team. Available in standard and child sizes.

Framed Flexi Dam non latex – latexfree dental dam with built-in frame

Pre-framed, the time required for applying the rubber dam is reduced.

Fiesta color coded tiger clamps

Rubber dam clamps with prongs hold particularly well, even there is less tooth substance available.

Dental Dam Kits – all in one

A rubber dam set is an ideal way to start, as it contains everything for the use of rubber dams.



ROEKO Luna



The firmness and compactness of Luna rolls make them so economical. There is no need to frequently replace them during treatment, so time consuming and expensive disturbances are a thing of the past. Luna goes on absorbing throughout the dental procedure and continues to retract the cheek – important aspects when choosing a dental roll.

- retracts cheek effectively
- keeps its shape and does not fall apart when full of saliva
- absorbs moisture throughout treatment
- packed in plastic bags protecting contents from moisture and dust

Size	300 g
1	100001
2	100002
3	100003
4	100004

Size	500 pcs
1	105001
2	105002
3	105003
Export only	

Size	1000 pcs
1	104001
2	104002
3	104003
Export only	

ROEKO Cotton-roll



Cotton-roll is an extra soft and absorbent dental roll.

Size	1000 pcs
1	104011
2	104012
3	104013
Export only	

ROEKO Luna Gold



A gold stripe for your dental office

Luna Gold is a unique dental roll – you see and feel the difference. Luna Gold has a mucophile cover which prevents contact between the fibres and the soft tissue. Luna Gold can therefore be removed without wetting the dental roll beforehand. There is no risk of tissue inflammation, an important feature when treating sensitive patients. The exceptional quality of Luna Gold is easily recognised – the gold stripe differentiates Luna Gold from standard dental rolls.

- no risk of tissue inflammation
- absorbs moisture throughout treatment
- does not fall apart when full of saliva
- non chlorine bleached
- Best quality made in Germany

Size	300 g
1	109121
2	109122
3	109123

Size	1000 pcs
1	109101
2	109102
3	109103
Export only	

ROEKO Parotisroll



Parotisroll is a unique dental roll with a spring action inside. Due to the spring action Parotisroll stays in place and provides more working space. Dental treatment runs more smoothly and with greater efficiency.

- When used **buccally** Parotisroll exerts gentle pressure on the parotis reducing saliva flow. It retracts the cheek and the spring action helps keep the mouth open.
- When used **lingually** the arched roll holds down the tongue
- When placed **labially** Parotisroll retracts the lip making it ideal for use in cosmetic dentistry, orthodontics and when treating children

Size	100 pcs		
1	ø 9 mm	80 mm	160001
2	ø 10 mm	80 mm	160002

Size	100 pcs		
3	ø 10 mm	100 mm	160003
5	ø 8 mm	100 mm	160005

ROEKO Roll-o-mat



The Roll-o-mat dispenser is simply ingenious: slight pressure on the lid is sufficient to dispense just one roll, which stays on the fork ready for use. The remaining rolls are protected from spray and dust. The Roll-o-mat dental roll dispenser is available in plastic or chrome nickel steel and can be used for dental rolls sizes 1, 2 and 3 provided that they have a standard length (36–40 mm). The Roll-o-mat is not suited to dispense Luna for kids. Both dispensers can be autoclaved up to 134 °C.

ROEKO Roll-o-mat Plastic, white	120004
Size 134 × 100 × 48 mm	

ROEKO Roll-o-mat Chrome-Nickel-Steel	120005
Size 134 × 100 × 43,5 mm	

ROEKO Lunamat



The Lunamat dispenser is equipped with a drawer. On opening the drawer 2–3 dental rolls are ready for use. The remaining rolls are protected from spray and dust. The dispenser is suitable for standard dental rolls size 1, 2, 3 and 4 and for Luna for kids.

ROEKO Lunamat	120000
----------------------	---------------

ROEKO Parotimat



Parotisroll dispenser holds 50 Parotisrolls. The dispenser enables individual removal and hygienic storage of Parotisroll and Parotisroll anatomic.

ROEKO Parotimat	162100
Size 112 × 103 × 82 mm	

ROEKO Cotton Pellets



ROEKO cotton pellets are super soft and extremely absorbent. Fully automated production and best quality cotton ensure constant high absorbency and uniform size and shape from pellet to pellet.

Size			
000	ø 3.0 mm	1.5 g	210000
00	ø 4.0 mm	4.0 g	210100
0	ø 4.8 mm	4.0 g	210110
1	ø 6.3 mm	10.0 g	210111
2	ø 7.6 mm	10.0 g	210112

ROEKO Solomat-Click



Solomat-Click consists of the base, the refill and the dispenser surface. The three parts simply "click" together. The stainless steel base ensures stability. The rounded bars in the grille facilitate individual removal of pellets while keeping their shape. The lid protects the pellets from spray and dust. The refill which forms the body of the dispenser can be repurchased as required. Solomat-Click is available for pellet sizes 000, 00, 0 and 1.

Size Dispenser	1 pc
000	224000
00	224100
0	224110
1	224111
Size 43 x 50 x 41 mm	

Size Refills		3 pcs
000	ø 3.0 mm	214000
00	ø 4.0 mm	214100
0	ø 4.8 mm	214110
1	ø 6.3 mm	214111
Size 43 x 43 x 31 mm		

ROEKO Solomat-N



For easy removal of single cotton pellets, etching pellets or foam plastic pellets. Solomat-N is

- made of high quality plastic
- pellet dispenser with practical slot-in refill system
- autoclavable up to 134 °C

The cotton pellets are pushed to the surface by hand

Size Dispenser	1 pc
000	223000
00	223100
0	223110
1	223111
2	223112
Size 75 x 43 x 52 mm	

Size Refills		6 pcs
000	ø 3.0 mm	213000
00	ø 4.0 mm	213100
0	ø 4.8 mm	213110
1	ø 6.3 mm	213111
2	ø 7.6 mm	213112
Size 39 x 39 x 45 mm		

Dental Dam

The use of dental dam isolates the treatment area and guarantees best possible moisture control. Soft tissue is protected and there is no risk that the patient aspirates or swallows instruments. The risk of cross infection is reduced. Thus working with dental dam is safe and more efficient.

HYGENIC Dental Dam

HYGENIC Dental Dam is made of pure, natural rubber latex. Tough and hard to tear, the powdered material is used as a barrier during operative and endodontic procedures.



Standard size		36 sheets
ready cut, Size 152 × 152 mm (6" × 6")		
light	thin	H00533
	medium	H00534
	heavy	H00535
	extra heavy	H00536
dark	thin	H00538
	medium	H00539
	heavy	H00540
	extra heavy	H00541
green	thin	H02146
	medium	H02147
	heavy	H02148
	extra heavy	H02149
blue	medium	H03530
	heavy	H07315

Children's size		52 sheets
ready cut, Size 127 × 127 mm (5" × 5")		
light	thin	H00523
	medium	H00524
	heavy	H00525
	extra heavy	H00526
dark	medium	H00529
	heavy	H00530
	extra heavy	H00531
	green	thin
	medium	H02142
	heavy	H02143
	extra heavy	H02144
blue	medium	H03529
	heavy	H07314



Convenience Dam Pack		360 sheets
Standard size		
Size 152 × 152 mm (6" × 6")		
thin	light	H04242
	green	H04246
	medium	light
	dark	H04245
	green	H04247
	Fiesta	H07317

Convenience Dam Pack		364 sheets
Children's size		
Size 127 × 127 mm (5" × 5")		
thin	light	H04236
	green	H04240
medium	light	H04237
	dark	H04239
	green	H04241
	Fiesta	H07316



Children's size

Dental Dam on roll



Standard size		
Size 152 mm × 5.5 m		
light	medium	H00514
dark	medium	H00519
green	thin	H02174
	medium	H02175
	extra heavy	H02177

Children's size		
Size 127 mm × 6.7 m		
light	thin	H00503
	medium	H00504



Children's size

HYGENIC Fiesta Dental Dam (latex)



Natural rubber latex dam is supplied scented for greater patient and staff comfort. Each box contains an assortment of purple, blue and pink colored sheets with a fresh fruit scent.

Standard size		36 sheets
Size 152 × 152 mm (6" × 6")		
thin		H04639
medium		H04642
heavy		H04644

Children's size		52 sheets
Size 127 × 127 mm (5" × 5")		
thin		H04640
medium		H04641
heavy		H04643



Children's size

HYGENIC Elasti-Dam



Elasti-Dam is considerably more elastic¹⁾ and tear resistant than standard latex dam making application much easier. At the same time Elasti-Dam offers the excellent retraction properties valued in standard latex dam. Elasti-Dam is powderfree²⁾ and has a controlled low level of protein, so patient and dental team are less exposed to allergenic particles and face a lower risk of developing a latex allergy.

1) up to 40% more according to internal tests
 2) per EN 455-3:2015 < 2 mg/Sheet & ISO 21171, standards and test methods for medical gloves

Standard size		36 sheets
ready cut , Size 152 × 152 mm (6" × 6")		
green	medium	H11625
	heavy	H11676
blue	medium	H11627
	heavy	H11678

Children's size		52 sheets
ready cut , Size 127 × 127 mm (5" × 5")		
green	medium	H11624
	heavy	H11675
blue	medium	H11626
	heavy	H11677



Children's size

HYGENIC Flexi Dam non latex



Flexi Dam non latex is made from a high quality material with exceptional characteristics. Flexi Dam non latex is easy to use and ensures optimum moisture control. The highly elastic material contracts closely around the tooth for effective isolation. Violet Flexi Dam prevents confusion with latex dams. Blue Flexi Dam provides good contrast to the area of treatment and has a relaxing effect on the doctor. Working with Flexi Dam is effective and safe.

- highly elastic
- excellent recovery properties for effective isolation of the tooth
- latex free
- powderfree
- odorless

HYGENIC Flexi Dam non latex		30 pcs
Size 152 × 152 mm (6" × 6"), medium		
violet		H09945
green		H09946

Framed Flexi Dam non latex



- Convenient built-in-frame - saves time
- Highly elastic Flexi Dam material - tear resistant and easy placement
- Latex free – allergy free
- Odourless – comfort

HYGENIC Flexi Dam non latex	20 pcs
framed, Size 100 × 105 mm, medium	
violet	H00750

HYGENIC Dental Dam non latex

Latexfree dental dam, tear resistant and with excellent recovery properties



Standard size	15 sheets
Size 152 × 152 mm (6" × 6"), medium	
green	H09105

Children's size	15 sheets
Size 127 × 127 mm (5" × 5"), medium	
green	H09928

Convenience pack	75 sheets
Size 152 × 152 mm (6" × 6"), medium	
teal green	H09106



Children's size

ROEKO Dental Dam



ROEKO Dental Dam Latex	36 pcs
Size 150 × 150 mm, green	
thin	390020
medium	390021
heavy	390022

ROEKO Elasti-Dam



Elasti-Dam is considerably more elastic¹⁾ and tear resistant than standard latex dam making application much easier. At the same time Elasti-Dam offers the excellent retraction properties valued in standard latex dam. Elasti-Dam is powderfree²⁾ and has a controlled low level of protein, so patient and dental team are less exposed to allergenic particles and face a lower risk of developing a latex allergy.

1) up to 40% more according to internal tests
 2) per EN 455-3:2015 < 2 mg/Sheet & ISO 21171, standards and test methods for medical gloves

Standard size		36 sheets
Size 152 × 152 mm		
medium	green	60013793
heavy	green	60013794

Children's size		36 sheets
Size 127 × 127 mm		
medium	blue	60013795
heavy	blue	60013796



Children's size

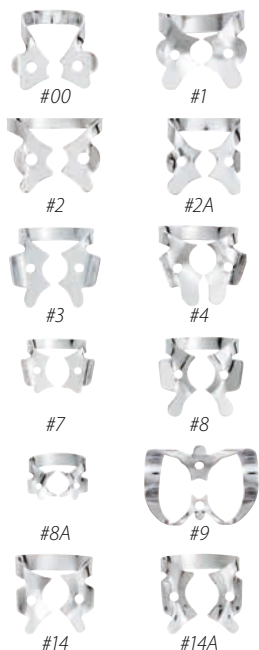
ROEKO Flexi Dam non latex



Flexi Dam non latex is made from a high quality material with exceptional characteristics. Flexi Dam non latex is easy to use and ensures optimum moisture control. The highly elastic material contracts closely around the tooth for effective isolation. Violet Flexi Dam prevents confusion with latex dams. Blue Flexi Dam provides good contrast to the area of treatment and has a relaxing effect on the doctor. Working with Flexi Dam is effective and safe.

- highly elastic
- excellent recovery properties for effective isolation of the tooth
- latex free
- powderfree
- odorless

ROEKO Flexi Dam non latex	
150 × 150 mm, 0.5 mm thick, 30 pcs with template	
violet	390035
blue	390033



HYGENIC Gloss Finish Winged Clamps

Application steps can be combined by placing the dam, clamps and frame simultaneously. Once applied, the dam is stretched under the wings of the clamp.

#00	For upper and lower premolar and anterior teeth	H02762
#1	General purpose, upper premolar clamp	H02703
#2	Premolars and upper incisors	H02761
#2A	Premolars and upper incisors	H05688
#3	Flat jawed, small molar clamp	H05689
#4	Small upper molars, deciduous teeth	H02704
#7	Flat jawed, general purpose, lower molar clamp	H02758
#8	General purpose, upper molar clamp	H02760
#8A	Downward sloped jaws for small, partially erupted molars	H02759
#9	Anterior teeth	H02763
#14	For partially erupted or irregularly shaped molars	H05690
#14A	Downward sloped jaws for large, partially erupted molars	H02757

HYGENIC Dental Dam Clamp Sets

Contain the clamps most needed for dam applications. Contains the following clamps: 1, 2, 4, 7, 8A, 9, 12A, 13A, 14A

System-9 Winged-Clamp-Pak	H02701
---------------------------	--------



HYGENIC Gloss Finish Wingless Clamps

To apply, first position the clamp intraorally then stretch the dental dam over the clamp and tooth. Wingless clamps are designated with a "W" (wingless) for easy identification.

#212	Anterior teeth	H07792
#W00	For upper and lower premolar and anterior teeth	H02769
#W2	Premolars and upper incisors	H02768
#W2A	Premolars and upper incisors	H02775
#W3	Flat jawed, small molar clamp	H03814
#W7	Flat jawed, general purpose, lower molar clamp	H02765
#W8	General purpose, upper molar clamp	H02767
#W8A	Downward sloped jaws for small, partially erupted molars	H02766
#W9	Anterior teeth	H02770
#W14	For partially erupted or irregularly shaped molars	H02774
#W14A	Downward sloped jaws for large, partially erupted molars	H02764
#W56	Universal molar clamp	H03815

HYGENIC Fiesta Color Coded Matte Finish Clamps



Each clamp is individually color coded for unmistakable identity. Non reflective matte finish for better visibility. For convenient storage the 9 color coded clamps are placed on 9 match-in color coded pegs on the stainless steel organizer.

Hygenic Fiesta Color Coded Matte Finish Winged Clamps

#2	● Premolars and upper incisors	H09957
#2A	● Premolars and upper incisors	H09958
#4	● Small upper molars, deciduous teeth	H09959
#7	● Flat jawed, general purpose, lower molar clamp	H09960
#8A	● Downward sloped jaws for small, partially erupted molars	H09961
#9	● Anterior teeth	H09962
#12A	● Serrated jaw clamp, upper left molars	H09963
#13A	● Serrated jaw clamp, upper right molars	H09964
#14A	● Downward sloped jaws for large, partially erupted molars	H09965

Hygenic Fiesta Color Coded Matte Finish Wingless Clamps

#W2	● Premolars and upper incisors	H02794
#W2A	● Premolars and upper incisors	H02795
#W3	● Flat jawed, small molar clamp	H02796
#W7	● Flat jawed, general purpose, lower molar clamp	H02797
#W8	● General purpose, upper molar clamp	H02798
#W8A	● Downward sloped jaws for small, partially erupted molars	H02799
#W9	● Anterior teeth	H02800
#W14A	● Downward sloped jaws for large, partially erupted molars	H02802
#W56	● Universal molar clamp	H02803

HYGENIC Dental Dam Clamp-Sets

Contain the clamps most needed for dam applications. Available winged or wingless.

Fiesta 9 Color-coded Clamp Pak winged Contains the following clamps: 2, 2A, 4, 7, 8A, 9, 12A, 13A, 14A	H09966	Fiesta 9W Color-coded Clamp Pak wingless Contains the following clamps: W2, W2A, W3, W7, W8, W8A, W9, W14A, W56	H02801
Fiesta Color-coded Clamp Organizer	H09956		

**HYGENIC Brinker Clamps
(Tissue Retractors)**

Provides maximum retraction without laceration of gingival tissues. Available as set containing one of each clamp, also sold individually.



#B1
lower Molars



#B2
upper left molars



#B3
upper right molars



#B4
anterior & canines



#B5

class V restorations on all teeth



#B6

Brinker Universal Clamp Set	H01054	B-1	Lower molars/pedo	H01048
(one of each B-1, B-2, B-3, B-4, B-5, B-6)		B-2	Upper left molar	H01049
		B-3	Upper right molar	H01050
		B-4	Bicuspid, anterior	H01051
		B-5	All bicuspids & incisors	H01052
		B-6	All bicuspids & incisors	H01053

HYGENIC Tiger Clamps

Tiger Clamps with serrations for improved stabilisation



#12A*
lower right molars /
upper left molars



#13A*
lower left molars /
upper right molars

#12A	Serrated jaw clamp, lower right molars / upper left molars	H02706
#13A	Serrated jaw clamp, lower left molars / upper right molars	H02705



ROEKO Clamps

ROEKO winged clamps provide extra retraction of the dam from the operating field.

ROEKO Clamp Set			390050
The set consists of clamp #00, #206, #209, #200, #201, #212			
#00	Premolar, high bow, narrow jaw		390051
#206	Upper premolars, distinctive concave jaw shape		390052
#209	Lower premolar, flat clamp mouth		390053
#200	Lower molar		390054
#201	Upper molar, concave jaw shape		390055
#211	Anterior tooth, concave jaw shape		390056
#212	Anterior tooth		390057





HYGENIC Dental Dam Template

Used as a guide when marking hole positions on dental dam. Dam is placed over template and marked.

6" x 6"	(152 x 152 mm)	H01441
---------	----------------	--------

5" x 5"	(127 x 127 mm)	H01440
---------	----------------	--------



Children's size



HYGENIC Dental Dam Stamp

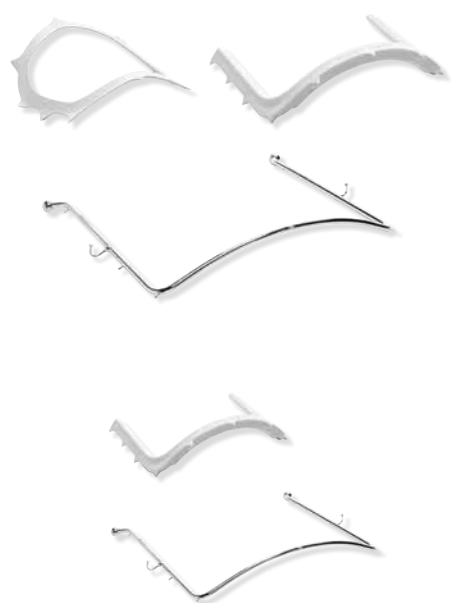
Used to mark standard tooth positions on dental dam. Works with most office ink pads.

6" x 6"	(152 x 152 mm)	H01443
---------	----------------	--------

5" x 5"	(127 x 127 mm)	H01442
---------	----------------	--------



Children's size



HYGENIC Dental Dam Frame			
Three types to choose from:			
Ostby plastic frame – radiolucent	6"	(152 mm)	H00560
U-shaped plastic frame – radiolucent	6"	(152 mm)	H01414
U-shaped metal frame	6"	(152 mm)	H07083
All frames are autoclavable			

HYGENIC Dental Dam Frame			
Two types to choose from:			
U-shaped plastic frame – radiolucent	5"	(127 mm)	H01416
U-shaped metal frame	5"	(127 mm)	H07082
All frames are autoclavable			



Children's size



Dental Dam Punch

Ainsworth-style stainless steel punch with 5 holes for use with Elasti-dam, Flexi Dam, Dental Dam Latex and Dental Dam non latex. Easy to handle and can be sterilized in the autoclave or in a dry heat sterilizer.

HYGENIC Dental Dam Punch	H01261
--------------------------	--------



Dental Dam Forceps

High quality stainless steel dental dam forceps to enable secure transfer and fixation of the clamps to the tooth.

HYGENIC Dental Dam Forceps	H01262
----------------------------	--------



Wedjets Stabilizing Cord

Alternative or in addition to conventional clamp method of securing dental dam. Latex available in 3 sizes and non-latex in 2 sizes.

Latex			
extra small	blue	7 ft. (2.1 m)	H08040
small	yellow	7 ft. (2.1 m)	H06522
large	orange	7 ft. (2.1 m)	H06523

Non-Latex			
small	green	7 ft. (2.1 m)	H06524
large	blue	7 ft. (2.1 m)	H06525

HYGENIC Ora-Shield Dental Dam Napkins

Soft dental dam napkins to avoid direct contact of dental dam with sensitive skin. Made of special, non-woven fabric in both frame size for use with standard frames or larger size for use with a strap-holder. Maximum absorption of saliva, water and perspiration.



HYGENIC Ora-Shield Dental Dam Napkins	50 pcs
Fits frame sizes 5" (127 mm) and 6" (152 mm)	H01415
Fits Holder (large size)	H00841

**ROEKO Template**

The template is made of durable plastic and is an aid to locating and marking the hole positions on the dental dam.

ROEKO Template	390042
----------------	--------

**ROEKO Metal frame**

The u-shaped frame acc. to Young has several prongs along its length to hold the dental dam tightly. The frame is made of high quality chrome nickel steel and can be sterilized.

ROEKO Metal frame	390040
-------------------	--------

**ROEKO Punch**

High quality instrument with 8 holes for Flexi Dam, Dental Dam Latex and Dental Dam Silicone non latex. Easy to handle and can be sterilized in the autoclave or dry heat sterilizer.

ROEKO Punch	390010
-------------	--------

**ROEKO Clamp Forceps**

High quality forceps to enable a secure transfer and fixation of the clamps to the tooth.

- easy to handle
- can be sterilized in the autoclave or dry heat sterilizer

ROEKO Clamp Forceps	390011
---------------------	--------

HYGENIC Dental Dam Kits



HYGENIC Complete Kits – with punch and forceps			
Complete Kit with Winged Clamps	H02778	Complete Kit with Winged Clamps in plastic carrying case	H02782
6" x 6" (152 x 152 mm) Dam – green medium	36 sheets	6" x 6" (152 x 152 mm) Dam – green medium	36 sheets
6" (152 mm) Plastic frame (H01414)		6" (152 mm) Plastic frame (H01414)	
Fiesta 9 winged color coded clamp pak		Fiesta 9 winged color coded clamp pak	
6" Template		6" Template	
Latex Wedjets (thin, yellow)		Latex Wedjets (thin, yellow)	
Dental dam punch		Dental dam punch	
Dental dam forceps		Dental dam forceps	

Complete Kit with Wingless Clamps	H02790
6" x 6" (152 x 152 mm) Dam – green medium	36 sheets
6" (152 mm) Plastic frame (H01414)	
Fiesta 9W wingless color coded clamp pak	
6" Template	
Latex Wedjets (thin, yellow)	
Dental dam punch	
Dental dam forceps	

HYGENIC Complete Kit	52 sheets
with Brinker Clamps	H09715
5" x 5" (127 x 127 mm) Dam – green medium	
5" (127 mm) Plastic frame (H01416)	
Brinker universal clamp set	
5" Template	
Latex Wedjets (thin, yellow)	
Dental dam punch	
Dental dam forceps	



Children's size

HYGENIC Standard Kits – without punch and forceps			
Kit with Winged Clamps	H02779	Kit with Wingless Clamps	H02792
6" x 6" (152 x 152 mm) Dam – green medium	36 sheets	6" x 6" (152 x 152 mm) Dam – green medium	36 sheets
6" (152 mm) Plastic frame (H01414)		6" (152 mm) Plastic frame (H01414)	
Fiesta 9 winged color coded clamp pak		Fiesta 9W wingless color coded clamp pak	
6" Template		6" Template	
Latex Wedjets (thin, yellow)		Latex Wedjets (thin, yellow)	

Kit with Wingless Clamps and Metal Frame	H02793
6" x 6" (152 x 152 mm) Dam – green medium	36 sheets
6" (152 mm) Metal frame (H07083)	
Fiesta 9W wingless color coded clamp pak	
6" Template	
Latex Wedjets (thin, yellow)	

HYGENIC Dental Dam Kits



Simple Dam Kit with Elasti-Dam	
	H02900
6" x 6" (152 x 152 mm) Elasti-Dam – green medium 36 sheets (H11625)	
6" (152 mm) Plastic frame (H01414)	
Fiesta wingless color coded clamps	
6" Template	
Latex Wedjets (thin, yellow)	
Dental dam punch	
Dental dam forceps	

Simple Dam Kit with Flexi-Dam	
	H02901
6" x 6" (152 x 152 mm) Flexi-Dam non latex – purple 30 sheets (H09945)	
6" (152 mm) Plastic frame (H01414)	
Fiesta wingless color coded clamps	
6" Template	
Latex Wedjets (thin, green)	
Dental dam punch	
Dental dam forceps	

ROEKO Dental Dam Set



ROEKO Dental Dam Set		390000
Punch Type Ainsworth		1 pcs
Clamp forceps Type Ivory		1 pcs
Clampset		1 pcs
Flexi Dam non latex with template		30 pcs
Frame acc. to Young		1 pcs

Aspirator tips Surgitip

Treatment Auxiliaries

ASPIRATOR TIPS

The ROEKO Surgitip aspirator tip product family presents itself as well thought through and innovative. The plastic tips are hygienic, easy to handle and with their eye-catching green tips they enable extremely precise suction in surgery and microsurgery. The fine Surgitip-endo facilitates aspiration, even in the root canal.

Surgitip-endo

Endodontic aspirator tip for root canal treatment

Surgitip-endo removes rinsing solutions and moisture quickly and effectively from the root canal.

Surgitip Aspirator tips

The plastic aspirator tips allow extremely accurate aspiration as the shape and design have been specially developed for working under a microscope or loupe.



Concorde II

for aspirating high volumes

Aspirator tip for universal aspiration which gently keeps the tongue and cheek away.



ROEKO Surgitip



Surgitip aspirator tips are proven aids in drying the oral field of treatment in minimally invasive surgery and in aspirating particles. The plastic aspirator tips allow extremely accurate aspiration as the shape and design have been specially developed for working under a microscope or loupe. The tips are ideal because of their hygienic handling and ease of use.

- The green tip provides excellent contrast for precise aspiration
- Open field of view due to the narrow shape and conical tip
- Hygienic and time-saving, as packaged individually and ready for immediate use
- Various aspirator diameters for a wide range of treatments

Surgitip with green tip	
Tip opening \varnothing 2.5 mm / End-opening \varnothing 6.5 mm	
20 pcs*	462025
100 pcs**	462026

Surgitip without green tip	
Tip opening \varnothing 4.8 mm / End-opening \varnothing 6.5 mm	
20 pcs*	462048
100 pcs**	462049

* includes 1 Double Adapter
 ** includes 5 Double Adapters

ROEKO Surgitip-micro



Surgitip-micro is specially designed for use with microscopes and loupes. The extra fine tip-opening of 1.2 mm ensures precise aspiration without blocking the field of vision. Surgitip-micro is sterile and ready for use in peel packs.

Surgitip-micro with green mirco tip	
Tip-opening \varnothing 1.2 mm / End-opening \varnothing 6.5 mm	
20 pcs*	462012
100 pcs**	462013

* includes 1 Double Adapter
 ** includes 5 Double Adapter

ROEKO Surgitip-endo



Surgitip-endo is an aspirating tip specially designed to dry root canals. The innovative design of the suction tip allows for a multi-directional flexibility, so it can easily be introduced into hard-to-reach root canals without having to bend the Canal Tip. Aspiration is highly effective at all angles and visibility is not constricted.

Surgitip-endo	
Tip-opening \varnothing 0.35 mm, ISO 60 / End-opening \varnothing 6.5 mm	
20 pcs*	60018280

* includes 1 Double Adapter

ROEKO Aspirator tips



The plastic aspirator tips for single use with an opening of 4.8 mm are ideal for moisture evacuation during all standard procedures where sterility is not a requirement. Supplied with an autoclavable Double Adapter to fit on all equipment.

Aspirator tip without green tip	
Tip-opening \varnothing 4.8 mm / End-opening \varnothing 6.5 mm	
100 pcs*	461048

* includes 1 Double Adapter

ROEKO Concorde II



The smooth contours of the Concorde II aspirator tips mean they are comfortable for the patient and easy to clean. Concorde II is made from high quality, durable plastic.

- low noise suction
- flange retracts tongue and cheek gently
- matt surface prevents light reflection
- can be sterilized in autoclave or chemiclave up to 134 °C
- the tips are available with \varnothing 11 mm and \varnothing 16 mm for all standard equipment. The 11 mm tips are supplied with an autoclavable Adapter.

Size		
\varnothing 11 mm*	10 pcs	450211
\varnothing 16 mm	10 pcs	450216

* includes 1 Adapter

Adapter and Double Adapter



To ensure that ROEKO aspirator tips can be used on all standard aspirating equipment, Adapters are available. All Adapters are autoclavable and chemiclavable up to 134 °C.

Double Adapter	463000	
The Double Adapter can be used to fit Surgitip, Surgitip-micro and the non sterile aspirator tips onto \varnothing 11 mm and \varnothing 16 mm equipment.		

Adapter			
For connecting Concorde II and Surgitip can- nulas to 11 and 16 mm aspirating equipment			
Adapter	\varnothing 6.5	> \varnothing 11 mm	463025
Adapter	\varnothing 11	> \varnothing 16 mm	463011

Tooth cleaning
Surgical Sundries

Surgical Sutures

Electrosurgery System

Treatment Auxiliaries

SURGICAL SUNDRIES

Professional wound care following extraction and other surgical procedures support the body's own healing process and prevents postoperative wound infections. COLTENE wound care products are versatile and are used for initial haemostasis, in disinfection and for dabbing and drying the wound, through to wound closure with a surgical suture.

ROEKO Swab

Gauze swabs made of finest gauze fabric

Absorbent gauze swabs with stable folds for wound care and to bite on during treatment.



ROEKO Gelatamp

fast and safe wound care and haemostasis

Absorbable, well tolerated gelatine sponges for safe wound care and haemostasis of wound cavities and alveoli.



PerFect® TCS II

High frequency electrocautery system

Cutting and coagulation in soft tissue with precision.

Gelatamp gelatine sponges are absorbable, well-tolerated products for safe wound treatment and hemostasis of wound cavities and alveoli.

ROEKO Gelatamp forte



Gelatamp forte is a gelatine sponge that differs significantly from other commercially available gelatine sponges in terms of fluid absorption and haemostasis. A patented process gives Gelatamp forte a particularly rough surface and is also significantly more porous. Its special sponge structure has an **activated capillary effect**, i.e. immediate absorption of fluid and accelerated activation of the coagulation cascade after insertion of the sponge into the wound.

Gelatamp forte is available in a slim cuboid shape (10 × 10 × 4 mm) and can be easily applied into the wound cavity.

- Immediate absorption of blood and accelerated haemostasis
- Induces haemostasis even after treatment with anticoagulant medications
- Ideal drug carrier due to its neutral pH properties
- Complete resorption

With Gelatamp forte

- There is no impairment of visibility due to bleeding
- Procedure times get shorter

Blister Pack		
50 pcs.	10 × 10 × 4 mm	60022234

ROEKO Gelatamp



Gelatamp contains colloidal silver and is thus clearly distinguished from mere gelatine sponges. Owing to the silver, Gelatamp exerts a **broad antibacterial effect** over the entire resorption period. The silver also gives Gelatamp its specific brown colour.

- Broad antibacterial effect due to colloidal silver
- Fast initial haemostasis
- Stabilisation of the coagulum
- Complete resorption

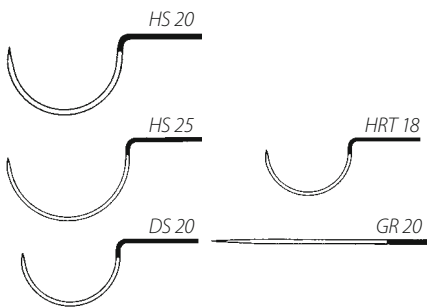
With Gelatamp

- There are no complications in the healing process
- The wound does not have to be reopened

Tubs		
20 pcs	14 × 7 × 7 mm	274002
50 pcs	14 × 7 × 7 mm	274007

Blister Pack		
20 pcs	14 × 7 × 7 mm	274008

ROEKO Sintraural



ROEKO's range of atraumatic needle-suture combinations and surgical sutures is ideal for a wide range of operations in oral and gnatho surgery. The tangle free sutures are easy to knot and stretch resistant. For easy identification the sutures are color coded:

Silk: black
Flexafil: green

The eyeless, precision ground needles glide gently through the tissue and do not cause unnecessary trauma.

Sintraural is time-saving as it is packed, ready to use, in a sterile double peel-pack; threading and sterilization are not necessary. Sintraural is available in six needle/suture combinations. Sintraural is non-resorbable.

Needle-Suture Combination				Suture 45 cm	12 pcs
HS 20	1.5 metric	USP 4/0	used for operations in firm gum tissue	Silk, black	490301
HS 25	2.0 metric	USP 3/0	used after extractions	Silk, black	490302
DS 20	1.5 metric	USP 4/0	used for apical extractions and flap operations	Silk, black	490303
HS 25	2.5 metric	USP 2/0	used after extractions	Silk, black	490305
HRT 18	2.0 metric	USP 3/0	used after extractions, e.g. wisdom teeth, serial extractions, stitches in firm tissue	Flexafil, green	490306
GR 20	1.5 metric	USP 4/0	used for flap operations, periodontal surgery, gingivectomy	Silk, black	490307

ROEKO Gauze Strips



- sterile gauze pack and drainage
- bound, non-fray edges
- closely woven
- ready for use in a dispenser

ROEKO Gauze Strips	
1 cm x 5 m	290001



ROEKO Jodoform Tamponade	
Impregnated ribbon gauze with iodoform for aseptic wound tamponing and drainage. Non sterile.	
1 cm x 5 m	300001
2 cm x 5 m	300002

Roeko-Swab non-sterile



Roeko-Swab are ideal for absorbing liquids and secretions in the oral cavity or for biting on during treatment.

Size	500 pcs	Size	1000 pcs
pea	252001	pea	253001
hazel-nut	252002	hazel-nut	253002
walnut	252003	walnut	253003
plum	252004		
egg	252005		
x-large	252006		

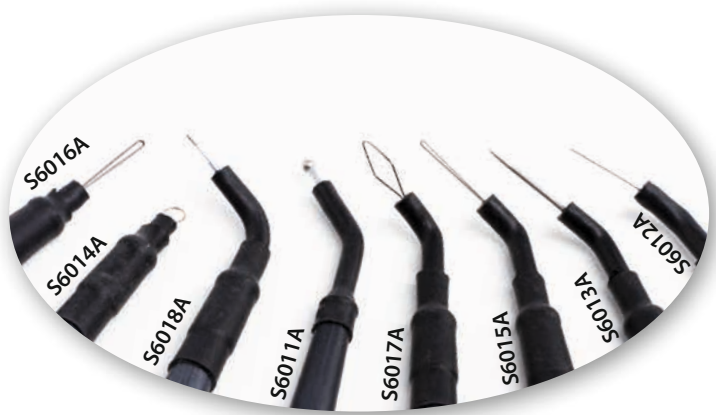
PerFect TCS II

PerFect TCS II, a high frequency electrosurgery system, helps manage soft tissue with greater efficiency, greater precision and less bleeding than the common dental scalpel.

- removes unwanted tissue with ease
- reduces chair time by simplifying operative procedures and maintaining hemostasis
- provides outstanding cutting precision for superior clinical and aesthetic results
- allows uneventful healing
- two applications: cutting and coagulation
- autoclavable electrode sheaths

Other clinical applications:

- widening gingival sulcus
- crown lengthening
- exposing impacted teeth
- removing hyperplastic gingiva
- frenectomy
- incising abscesses



PerFect TCS II continental Europe	S8230CE
PerFect TCS II United Kingdom	S8230UK

Accessories for PerFect TCS II Unit	
Dispersive Electrode	S213
Foot switch assembly	S8FSRK
Cord Assembly BNC connector	S6008CE
Handpiece holder	S7001

Electrode Sheaths for PerFect TCS II		
Complete Set S6011 thru 6018	8 pcs	S6010A
Included Set S6011, 6012, 6015	3 pcs	S7010A
Coag Ball	2 pcs	S6011A
45° Straight Knife	2 pcs	S6012A
45° Tapered Knife	2 pcs	S6013A
Straight Round Loop	2 pcs	S6014A
45° Long Loop	2 pcs	S6015A
Straight Long Loop	2 pcs	S6016A
45° Diamond Loop	2 pcs	S6017A
90° AP 1½	2 pcs	S6018A

Owners of a Strobex or PerFect TCS unit need to upgrade the handpiece holder to enable the usage of the current electrode sheaths. Please contact COLTENE's Customer Service Team.

BioSonic



BioSonic Scaler System

- BioSonic magnetostrictive Ultrasonic Scaler System automatically adjusts to work with any manufacturer's 25 kHz or 30 kHz inserts
- Faster hard calculus removal with on-demand maximum power turbo boost button
- Ergonomic handpiece improves operator's comfort during extended scaling
- Smallest footprint minimizes counter space requirements
- BioSonic inserts - variety of most popular tip designs in both 25 kHz and 30 kHz
- Better performance reliability and longevity through patented manufacturing process

BioSonic SuperSoft Inserts

- Maximum comfort in popular tip designs
- SuperSoft cushioned non-slip silicone grip
- Greater tactile sensitivity and rotational control

BioSonic US100R	US100R
Japan	US100R100
USA	US100R115T
Mexico/Latin America	US100R115M
Europe	US100R230CE
United Kingdom	US100R230UK

Australia	US100R240
BioSonic US100R Unit	1 pcs
Handpiece	1 pcs
Foot Switch	1 pcs
Quick Connect	1 pcs
Owner's Guide	1 pcs



US1025K US1030K Universal #10 Slotted
 US1025KOM US1030KOM Universal #10 Direct Flow
 US1025KSP US1030KSP Slim #10 Slotted

BioSonic Inserts 30 kHz	
10 Straight Universal	US1030K
10 Super Soft	USG1030K
10 OptiMist	US1030KOM
10 Slim Universal	US1030KSP

10 XSlim Super Soft	USG1030KSP
10 Slim OptiMist	US1030KOS
10 Slim OptiMist SS	USG1030KOS
1000 Triple Bend	US100030K



US1025KOS US1030KOS Slim #10 Direct Flow
 US100025K US100030K TB #1000 Slotted

BioSonic Inserts 25 kHz	
10 Straight Universal	US1025K
10 Super Soft	USG1025K
10 OptiMist	US1025KOM
10 Slim Universal	US1025KSP

10 XSlim Super Soft	USG1025KSP
10 Slim OptiMist	US1025KOS
10 Slim OptiMist SS	USG1025KOS
1000 Triple Bend	US100025K

SuperSoft cushioned non-slip silicone grip



USG1025K USG1030K Universal #10 Slotted
 USG1025KSP USG1030KSP Slim #10 Slotted
 USG1025KOS USG1030KOS Slim #10 Direct Flow

Accessories	
O-Ring Replacement Kit	US120R

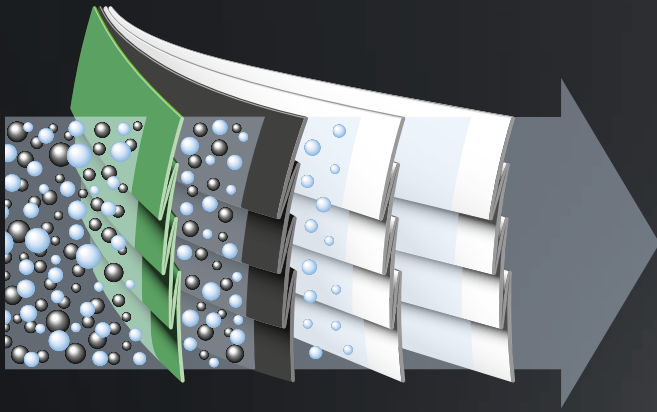
Ultrasonic Cleaning System
Gloves Face Masks

Infection Control

INFECTION CONTROL

In order to be in a position to work free of hygiene risks, COLTENE offers proven and extraordinary product solutions. Every patient and each member of the practice is a potential carrier of infection which can be transmitted to others. With the number of patients and the range of dental procedures involved every action in the hygiene chain must be routine. The safer and more user-friendly the products for preventing infections are, the faster and easier this can be accomplished. COLTENE is an experienced manufacturer of high-quality hygiene products for dentists.

With our certification under DIN EN ISO 13485 Medical Devices – Quality Management Systems we are obliged to implement quality assurance measures throughout all company processes.



Protecta active carbon

Fluid resistant face mask with activated carbon

Protects against pathogens and also against unpleasant odours.



Sterile Covers

for tubes, trays and other surfaces

High performance infection control according to the European Norm EN 13795 for surgical drapes.

BioSonic®

Ultrasonic Cleaning Units

To avoid cross-contamination, caused by contaminated instrument.



Rexam non latex



Rexam non latex powderfree extra touch & feel

- powderfree nitrile glove
- extremely elastic and tear-resistant
- comfortably soft and supple
- textured finger tips
- free from latex, powder and thiuram

Available only within the EU.

blue			
XS	5-5½	100 pcs	692070
S	6-6½	100 pcs	692071
M	7-7½	100 pcs	692072
L	8-8½	100 pcs	692073
XL	9-9½	100 pcs	692074

ROEKO Protecta



ROEKO Protecta active carbon

- 4-layer surgical face mask with activated carbon
- adsorbs odours
- filtration rate > 99%
- fluid-resistant mask, type IIR EN 14683
- hypoallergenic and latexfree

green		
	50 pcs	60013736

ROEKO Protecta Quick non Latex

- latexfree face mask with ear loops
- three-layer, skin-friendly fabric
- extra-soft ear loops and long pliable nose bow
- filtration rate > 99%, type II EN 14683

blue		
	50 pcs	680010

ROEKO Protecta Quick

- light face mask with ear loops
- triple-ply
- extra-soft ear loops and long pliable nose bow
- filtration rate > 98%, type II EN 14683

green		
	50 pcs	680006

ROEKO Protecta

- tie-on face mask
- triple-ply
- long, pliable nose bow
- filtration rate > 99%, type II EN 14683

green		
	50 pcs	680002

ROEKO Simplex



ROEKO Simplex-Plus Maxi

- polyethylene foil with absorbent cellulose coating
- roll with tear-off perforation
- extra-wide
- tie-fastening
- in practical dispenser box

ROEKO Simplex-Plus

- polyethylene foil with absorbent cellulose coating
- roll with tear-off perforation
- tie-fastening

ROEKO Simplex

- polyethylene foil
- roll with tear-off perforation
- tie-fastening

60 × 60 cm		
white	80 pcs	647101
blue	80 pcs	647102
mint	80 pcs	647104

59 × 54 cm		
white	80 pcs	647001
blue	80 pcs	647002

77 × 56 cm		
white	200 pcs	645001
blue	200 pcs	645002
green	200 pcs	645003

ROEKO Denta



- washable plastic patient bib
- adjustable neck size with velcro fastener
- with catch pocket at hem

70 × 60 cm		
blue	1 pc	634024



ROEKO headrest covers on roll

- polyethylene foil with absorbent cellulose coating
- fits in the Simplimat
- 3 sizes for almost all device types

height × width, white		
27 × 28 cm	100 pcs	670007
27 × 31 cm	100 pcs	670008
27 × 34 cm	100 pcs	670009

height × width, blue		
27 × 28 cm	100 pcs	670027
27 × 31 cm	100 pcs	670028
27 × 34 cm	100 pcs	670029



ROEKO filter paper

Individual headrest covers in a box

25 x 32 cm	500 pcs	670002
------------	---------	--------

ROEKO headrest covers for KaVo

fits on 1058/1042/1060/1062 E50/E70/80		
26 x 22 cm	100 pcs	670004

fits on 1058/1063/1065/1066 E30/E50		
27 x 22 cm	50 pcs	670006

ROEKO headrest covers for Ritter

Model: Analog		
26 x 22cm	50 pcs	670005



ROEKO Steri-Quick

- sterile covers for surfaces and instruments
- with absorbent coating and pathogen-proof polyethylene
- excellent draping properties and pleasant feel
- individually packed, sterile and ready to use
- meets maximum requirements of EN 13795 1-3

sterile		
35 x 50 cm	80 pcs	671100
50 x 70 cm	50 pcs	671101
70 x 100 cm	25 pcs	671102



ROEKO Steri-sleeve

- sterile sleeves for tubes for protection from cross-contamination between surgical procedures
- with absorbent coating and pathogen-proof polyethylene
- adhesive tape for fastening
- individually packed, sterile and ready to use
- meets maximum requirements of EN 13795 1-3

sterile		
width 7,5 cm	25 pcs	670101
length of one sleeve 100 cm		



ROEKO sleeves for tubes

- polyethylene foil with absorbent cellulose coating
- roll with Velcro fastener

non-sterile		
width 7,5 cm	100 m	670100

ROEKO Velcro fastener for sleeves for tubes

non-sterile		
	5 pcs	670102

BioSonic Ultrasonic Cleaning Systems



Designed for user safety

- FingerGuard instrument baskets keep sharp instrument points inside basket minimizing possibility of accidental finger sticks.
- Raised ridges inside baskets for easy and safe removal of instruments.
- Built-in drain with extra-long drain tube allows you to safely dispose of contaminated solutions without ever touching them. No lifting. No spills.
- The fully functional cover returns condensation back into the ultrasonic bath to limit airborne contaminants into the work environment.

Wear-resistant plastic housing

- Will not stain, scratch, rust or dent.
- Remains esthetically pleasing for years.

Quiet performance

- Tank cover completely encloses basket and beaker(s), significantly reducing noise level in your practice.
- Precisely tuned performance for optimal cleaning and quiet operation.
- Rubber pads on accessories prevent annoying rattle.

Synchronous timer

- Precisely timed cleaning cycles
- Cleaning cycles up to 30 minutes (UC50DB)
- Cleaning cycles up to 60 minutes (UC300 + UC125)



BioSonic UC150



YOUR PATIENTS TRUST YOU, YOU CAN TRUST BioSonic®!

Coltene's new BioSonic® UC150 ultrasonic cleaner offers great quality you have come to expect from all BioSonic® products while paving the way for some of the latest technological enhancements in ultrasonic cleaning. The sleek, Swiss design of BioSonic® UC150 is –

Designed for EFFICIENCY

- **Data logging** capability and download usage information via USB
- **Heater function** – Optional built-in controlled heating to aid cleaning process, saving time - feature can be separately activated via code
- **Degas function** - Eliminate air pockets and easily prepare your solution for maximum effective cleaning
- Fits **multiple cassettes** at once

Designed for VERSATILITY

- **Offers customizable operation** with multiple cleaning modes and user selectable cycle time and temperature
- Can be used as a **countertop or recessed unit**

Designed for CONVENIENCE

- **Quiet operation** to ensure a safe and comfortable working environment
- Glove-friendly, multilingual **touch screen** for a seamless user experience
- **Quick and easy draining** with externally accessible drain



UC150 Units	60021988	UC150 Cleaner Unit Euro Plug Type F	1
	60021989	UC150 Cleaner Unit UK Plug Type G	1
Accessory kit	60022042	Basket, Beakers (2), Covers(2), Positioning rings(2), Beaker holders(2)	1
Accessories	60022040	Cassette Basket (26.8 x 15.8 x 11.5cm 10.4 x 6.2 x 4.4")	1
	60022041	Beaker Holder	1
	UC53	600 ml Beaker with Cover and Positioning Ring	1
	60022043	UC150 Replacement Drain Filters	3
	60022044	UC150 Replacement Drain Hose	1
	60022046	UC150 Gasket for sealing	1
	60022045	UC150 Replacement Lid	1

The 1.5 gallon/5.7l stainless steel tank offers a small footprint but generous capacity.

Overall Dimensions: 34.5 x 27.6 x 35.5 cm (13.6" x 10.8" x 14")
 Tank Dimensions: 28.7 x 16.0 x 17.8 cm (11.3" x 6.3" x 7")
 Tank Capacity: 6.6 l (1.75 US gal)
 Use Capacity: 5.7 l (1.5 US gal)



BioSonic UC300



- Tank capacity 14.4 l
- Use capacity 11.4 l
- Overall Dimensions: L 48.2 × B 30.5 × H 31.1 cm
- Tank Dimensions: L 35.6 × B 22.9 × H 17.1 cm

BioSonic UC300	
BioSonic Ultrasonic Cleaner	UC300230CE
BioSonic Ultrasonic Cleaner with UK plug	UC300230UK
BioSonic UC300	1 pcs
Tank Cover	1 pcs
Enzymatic cleaning solution (UC32)	1 pcs
Owner's Guide	1 pcs

Accessories for UC300	
Large FingerGuard Instrument Basket with 5 section inserts	UC310
Twin FingerGuard Instrument Basket with 2 section inserts	UC311
Cassette Basket	UC325
Replacement Cover	UC340
3 Replacement Drain Filters	UC350
2-Beaker Positioning Cover	UC330
Basket Section Inserts	UC335
Replacement Drain Hose	UC355

BioSonic UC125



- with LCD technology for customized operation
- Extended product line – available also with heating.
- Tank capacity 4.8 l
- Use capacity 3.8 l
- Overall Dimensions: L 41.9 × W 24.9 × H 35 cm
- Tank Dimensions: L 28.6 × W 14.3 × H 12.7 cm

BioSonic UC125	
Ultrasonic Cleaner without heating	UC125230CE
Ultrasonic Cleaner with heating	UC125H230CE
BioSonic UC125	1 pcs
Tank Cover	1 pcs
General Purpose (UC31) + Super Rust Inhibitor	1 pcs
Owner's Guide	1 pcs

Accessory Kit UC155XD	
¾ FingerGuard Instrument Basket (UC152XD)	1 pcs
Borosilicate Beaker (UC53)	2 pcs
One Beaker Positioning Rack (UC153)	2 pcs

Accessories for UC125	
FingerGuard Instrument Basket	UC151XD
¾ FingerGuard Instrument Basket	UC152XD
One Beaker Positioning Rack	UC153

BioSonic UC50DB



- with Digital Timer
- Tank capacity 3.2 l
- Use capacity 2.0 l
- Overall Dimensions: L 27.3 × W 21.9 × H 20.3 cm
- Tank Dimensions: L 19.7 × W 14.6 × H 10.5 cm

BioSonic UC50DB	
BioSonic Ultrasonic Cleaner	UC50DB230CE
BioSonic Ultrasonic Cleaner with UK plug	UC50DB230UK
Tank Cover	1 pcs
FingerGuard™ Instrument Basket	1 pcs
Owner's Guide	1 pcs

Accessory Kit	UC59
FingerGuard Instrument Basket (UC58)	1 pcs
Borosilicate Beaker (UC53)	1 pcs
One Beaker Positioning Rack (UC153)	1 pcs

Accessories	
Plastic FingerGuard Instrument Basket with Metal Bottom	UC58
One Beaker Positioning Rack	UC153

BioSonic Accessories



ST-16

Borosilicate Beaker 600 ml	UC53
Basket for small parts	UCB2
Soaking Tray capacity 0.5 l 6.4 × 22.9 × 12.7 cm	ST16

General Purpose



BioSonic General Purpose Ultrasonic Cleaning Solution

Ultrasonic Cleaning Solution used for contaminants like blood, debris, saliva and general cleaning. Items to be cleaned are instruments, crowns, bridges, dentures and ultrasonic scaler tips.

473 ml MeterDose Bottle equals 30 litres of solution	UC30
---	------

BioSonic General Purpose Cleaner plus Super Rust Inhibitor

The new BioSonic UC31 General Purpose Cleaner combines the proven cleaning action of a BioSonic solution with corrosion protection in the ultrasonic bath. BioSonic UC31 comes in easy to use unit dose packets that make 2–4 liters of solution each. The concentrated liquid readily mixes in cold and warm water. As compared to powder no stirring is required to mix the UC31 concentrate in the bath. The practical dispenser box contains 20 unit dose packets.

20 × 15 ml equals 76 liters of solution	UC31
--	------



BioSonic Enzymatic Ultrasonic Cleaner

Used for contaminants like protein soils (dried blood, tissue, saliva) and general cleaning. Effectively breaks down and loosens hardened debris on instruments. Items to be cleaned are instruments, crowns, bridges, dentures and ultrasonic scaler tips.

236 ml MeterDose Bottle equals 30 litres of solution	UC32
---	------



BioSonic Plaster and Stone Remover

Powder Concentrate used for contaminants like plaster and stone. Items to be cleaned are dentures, partials, casting, denture flasks, mixing bowls and non-aluminum articulators.

840 g jar equals 11.4 litres of solution	UC34
---	------



BioSonic Germicidal Ultrasonic Cleaner

Cleaning Concentrate used for contaminants like blood, debris, saliva and for general cleaning. Cleans instruments as it disinfects ultrasonic bath. Items to be cleaned are instruments, crowns and bridges.

236 ml MeterDose Bottle equals 30 litres of solution	UC38
473 ml MeterDose Bottle equals 60 litres of solution	UC42



BioSonic Cement Remover

Remover Concentrate

16 oz (473 ml) MeterDose Bottle for 32 uses	UC39
--	------

**BioSonic UC40
Universal Ultrasonic Cleaner**



The new Universal ultrasonic solution provides a unique and effective formula for the pre-cleaning and decontamination of dental instruments. It possesses 3-in-1 cleaning properties of proven BioSonic solutions, enzymes and corrosion protection enabling effective removal of hardened debris and protein soils (blood, saliva, tissue, etc.) from hand and rotary instruments used in a dental office or laboratory.

- HTM 01-05 compliant
- Aldehyde free
- Phosphate free
- Non-ammoniated
- Biodegradable

1 l dosed bottle equals 50 litres of solution	60021960
5 l refill can equals 250 litres of solution	60021961

BioSonic WIPEOUT

BioSonic WIPEOUT are ready-to-use disinfectant wipes made of a premium durable substrate. It offers fast acting formulations for every surface of non-invasive medical devices, broad spectrum efficacy and pleasant aromas. Available in a mild alcohol or delicate lemon aroma.

BioSonic WIPEOUT Tex

Premium alcohol based wipes, which eliminate many pathogens in only 60 second, tested under high organic load.



Dispenser Tub and 6 Refills with each 180 Wipes 20 x 18 cm

Tex, Lemon (alcohol based)	60021957
Tex, Natural (alcohol based)	60021956

BioSonic WIPEOUT Sensitive

Premium non-alcoholic 2-in-1 wipes with superior cleaning and disinfecting performance, active against bacteria, yeast and viruses in only 15 seconds. Low streaking formula and ideal for surfaces sensitive to alcohol.



Dispenser Tub and 6 Refills with each 180 Wipes 20 x 18 cm

Sensitive, Lemon	60021959
Sensitive, Natural	60021958

Occlusion verification

OCCLUSION VERIFICATION

Occlusal testing and correction is one of the most demanding fields in modern dentistry.

HANEL offers a complete programme for occlusal testing in the lab. and practice, as well as optimal instruments and other accessories for easy handling.

The testing medium has the required thicknesses, suppleness, tear resistance and ink pick transfer, so punctiform, area or linear contacts and microcontacts can be reliably registered.



Thick test material

Stronger contacts are coloured over an area.



Medium fine test material

The universally applicable test medium.



Fine test material

Punctiform, fine registration of contacts.



Articulating Paper



HANEL Articulating Paper 200 µ

For the first stage of testing, to differentiate between areas of high and low masticatory pressure.

300 Sheets (18 x 50 mm)	red	200 µ	480 392
300 Sheets (18 x 50 mm)	blue	200 µ	480 397

HANEL Articulating Paper 80 µ & 40 µ

Articulating paper for medium-fine testing

U-shaped, 72 sheets	blue	80 µ	480367	I-shaped, 144 sheets	blue	80 µ	480387
U-shaped, 72 sheets	blue	40 µ	480337	I-shaped, 144 sheets	blue/red	80 µ	480384
U-shaped, 72 sheets	blue/red	80 µ	480364	Strips, 120 sheets	red	40 µ	480352
U-shaped, 72 sheets	red	40 µ	480332	Strips, 120 sheets	blue	40 µ	480357
C-shaped, 144 sheets	blue	80 µ	480377	Strips, 120 sheets	blue/red	40 µ	480354
C-shaped, 144 sheets	blue/red	80 µ	480374	Roll, 15 m	red	40 µ	480322
				Roll, 15 m	blue	40 µ	480327

Occlusion Foil



HANEL Occlusion Foil 12 µ

The HANEL foil fulfills all the requirements needed for state of the art gnathology. The biaxial characteristics of the foil ensure that it is highly tear resistant yet elastic. It is extremely thin and the precise colour transfer guarantees pinpoint markings on high spots.

22 mm x 25 m, single-sided	
black	480021
red	480022
green	480023
blue	480027

22 mm x 25 m, double-sided	
black	480041
red	480042
green	480043
blue	480047
black/red	480165

80 mm x 25 m, single-sided	
black	480031
red	480032
green	480033
blue	480037

80 mm x 25 m, double-sided	
black	480051
red	480052
green	480053
blue	480057

HANEL OkcluFoil+ 12 µ

The HANEL OccluFoil+ fulfills all the requirements needed for state of the art gnathology. It is extremely thin and the precise colour transfer guarantees pinpoint markings on high spots.

single-sided	
black	60022258
red	60022259
green	60022260
blue	60022261

double-sided	
black	60022262
red	60022263
green	60022264
blue	60022265
black/red	60022266



HANEL Shimstock Foil

The Shimstock foil is a metal foil without a colour coating. When the teeth are in normal occlusion, this foil can be pulled through the ground-in contacts. If a muscle tonus exists, the foil is held back.

8 µ (8 mm x 5 m)	480180
------------------	--------



HANEL Foil Dispenser

HANEL Foil Dispenser	480620
----------------------	--------

HANEL Miller Tweezers

The high quality, precision tweezers which can be sterilized, facilitate the efficient use of thin materials.

Miller Tweezers straight	480610
Miller Tweezers bent	480612
Double Fork Lab	480613
Double Fork for the practice	480614



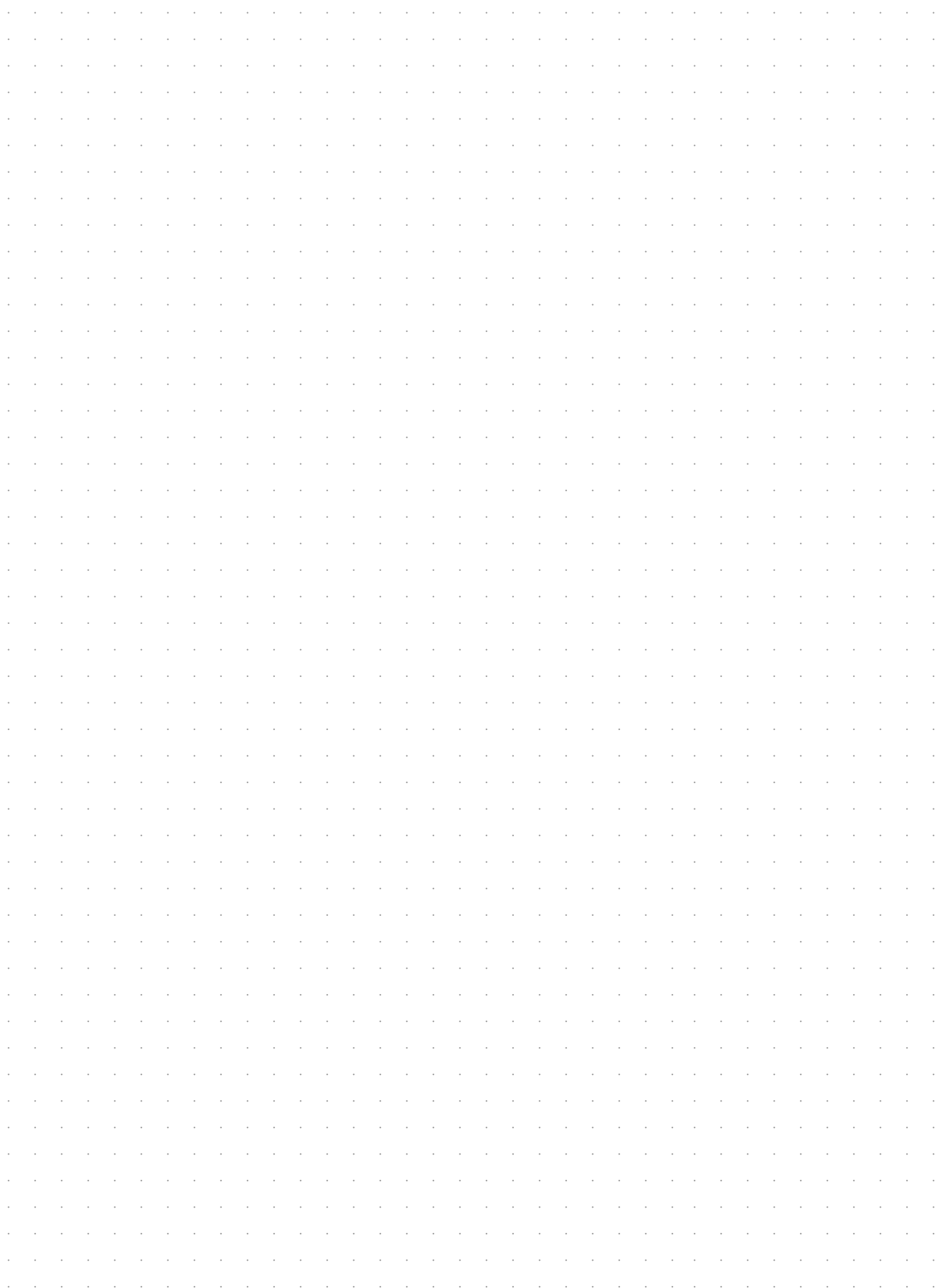
Hanel Okklu-top

Okklu-top with improved formula and colour which is easy to remove. For checking approximal contact points and on interior surfaces of crown an bridges.

Aerosol	75 ml	red	480410
Aerosol	75 ml	green	480411

NOTES





NOTES





Locations

CH Coltène/Whaledent AG

Feldwiesenstrasse 20
9450 Altstätten / Switzerland
T +41 71 757 53 00
F +41 71 757 53 01
info.ch@coltene.com

CN Coltène/Whaledent China Trading Co. Ltd.

Rm. 1103/1104, Bldg. B2, Wu Dong Plaza
#9 Chegongzhuang Street, West District
Beijing 100044 / P.R. China
T +86 10 6212 3251
F +86 10 6212 3252
info.cn@coltene.com

IT Coltène Italia S.r.l.

c/o Polo Tecnologico della Brianza
Via Alessandro Volta, 94 - Cond. Bianchi
20832 Desio (MB) / Italy
T +39 0362 62 67 32
F +39 0362 63 25 80
info.it@coltene.com

DE Coltène/Whaledent GmbH + Co. KG

Raiffeisenstraße 30
89129 Langenau / Germany
T +49 7345 805 0
F +49 7345 805 201
info.de@coltene.com

FR Coltène/Whaledent S.a.r.l.

Synergie Park
3 avenue Louis Néel
59260 Lezennes / France
T +33 320 64 64 00
F +33 320 64 64 03
info.fr@coltene.com

UK Coltène/Whaledent Ltd.

The President Suite
Kendal House, Burgess Hill
Victoria Way
West Sussex, RH15 9NF / UK
T +44 1444 235486
F +44 1444 870640
info.uk@coltene.com

US Coltène/Whaledent Inc.

235 Ascot Parkway
Cuyahoga Falls, Ohio 44223 / USA
T +1 330 916 8800
F +1 330 916 7077
info.us@coltene.com

IN Coltène/Whaledent Private Ltd.

106/107, Hallmark, Vasant Oscar
L.B.S Marg, Mulund West
Mumbai 400080, Maharashtra / India
T +91 22 25923626
F +91 22 25623165
info.in@coltene.com

BR Vigodent SA Indústria e Comércio

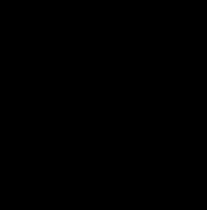
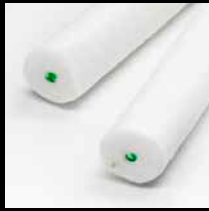
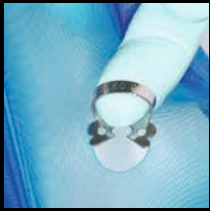
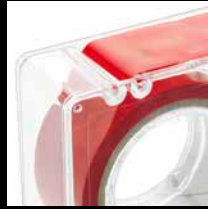
Rua Pesqueira 26 Bonsucesso
Rio de Janeiro CEP 21041-150 / Brazil
T +5521 3865 5600
F +5521 2280 8411
sac@vigodent.com.br

ES Coltène Iberia S.L.U.

c/Doctor Fleming, 3 - Bajo A
28220 Majadahonda, Madrid / Spain
T +34 91 63 86 492
F +34 91 63 86 279
info.ib@coltene.com

JP Coltène Japan LLC

2-2-28 2nd Floor, Nishikicho
190-0022 Tachikawa Tokyo / Japan
T +81 42 595 6945
F +81 42 595 6946
info.jp@coltene.com



© COLTENE – www.coltene.com



 COLTENE