

SDI | ZIPBOND

UNIVERSAL ADHESIVE



DEFENCE
AGAINST
CLINICAL
VARIABILITY



MADE IN AUSTRALIA 5ML

UNIVERSAL ADHESIVE

DEFENCE AGAINST CLINICAL VARIABILITY

Zipbond Universal is a single component fluoride releasing universal adhesive, compatible with self etch, selective etch and total etch techniques. In the presence of varied tooth structure and an abundance of restorative choices, Zipbond Universal achieves reproducible and reliable bond strengths.

CONSISTENT BOND STRENGTHS

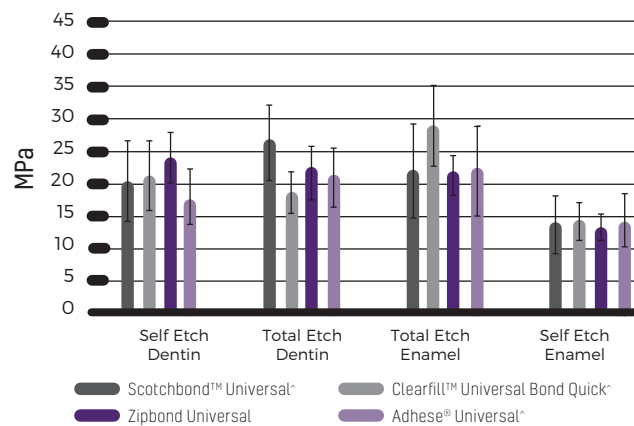
Zipbond Universal achieves successful bond strengths across dentin and enamel using self etch and total etch techniques.

Total etch is considered the best option for enamel only preparations². Zipbond Universal has minimal fluctuation in bond strength using the total etch technique on enamel, demonstrating the ability to achieve predictable results in each use.

The heterogenous nature of dentin and variability in mineral and water content adds complexity to dentin bonding¹. The carefully selected chemistry of Zipbond Universal overcomes the challenges associated with dentin bonding to provide strong and reproducible bond strengths in self etch and total etch techniques.

Select Zipbond Universal for consistent adhesion, predictable clinical outcomes and confidence in the interface between your patients tooth and restoration.

SHEAR BOND STRENGTH [MPa]*



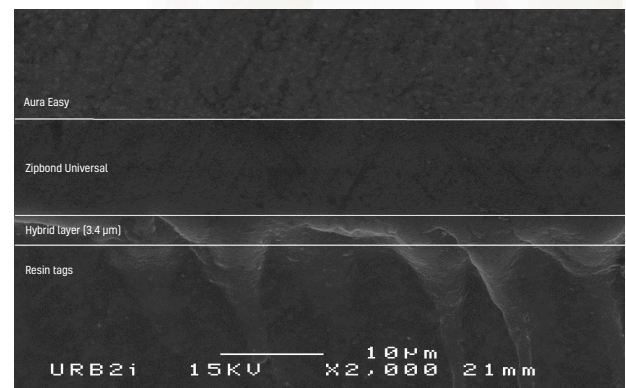
WET AND DRY DENTIN BONDING

Variation in surface moisture of dentin can affect bond strength². Zipbond Universal achieves similar bond strengths when applied to wet and dry dentin, reducing technique sensitivity.

Even in situations where dentin has been over-dried, Zipbond Universal will still form a hybrid layer, further mitigating technique sensitivity.



DEHYDRATED (OVER DRIED) DENTIN WITH ETCHING~



~Independently tested by Unité de Recherches Biomatériaux Innovants et Interfaces (URB2i-EA 4462 Paris Descartes). Chairman : Dr Jean-Pierre ATTAL

MDP MONOMER



**BPA &
HEMA
FREE**

PROPRIETARY COMBINATION OF ADHESIVE MONOMERS

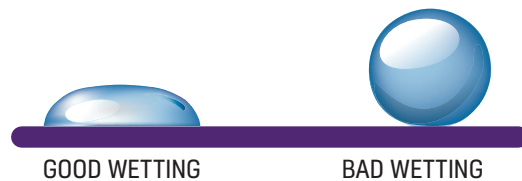
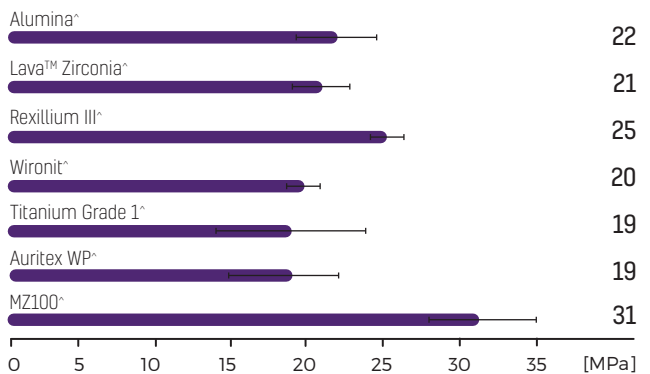
Zipbond Universal contains two adhesive monomers that work in harmony to deliver a durable and robust bond. A proprietary combination of monomers, including the MDP monomer, makes adhesion effective on enamel, dentin and a range of indirect substrates.

The adhesive monomers contain hydrophilic and hydrophobic groups. Hydrophilic monomers quickly infiltrate into enamel and dentin tubules. Effective wettability is achieved as the adhesive spreads homogenously over the tooth surface, offering a complete seal of dentin tubules.

PREDICTABLE BOND STRENGTHS TO INDIRECT SUBSTRATES

Zipbond Universal achieves high bond strengths to composite, ceramic, porcelain and metal substrates. Bond strength across indirect substrates is comparable, highlighting reliable adhesion for these restorative situations. Use Zipbond Universal, together with your preferred indirect restorative material, with confidence.

SHEAR BOND STRENGTH*



Upon curing, the hydrophobic monomers reduce the permeability of water to create a sound interface and strong interaction between tooth and substrate.

HIGHLY ESTHETIC

EXCEPTIONAL CONTROL

Controlled handling, optimal film thickness and increased bond strength is achieved by the incorporation of nanofillers. Zipbond Universal is easy to apply in a homogenous thin layer. Indirect restorations can be seated with precision to deliver an unobstructed seal against the tooth.

5%
nanofillers
8µm
film thickness

HIGHLY ESTHETIC

The adhesive is visible upon placement and virtually invisible on dentin after it is cured. It is ideal for use in esthetic zones with bleach and translucent restorative materials.

PLEASANT AROMA

Zipbond Universal is mild in its aroma to support your patients comfort during restorative procedures.

FLUORIDE RELEASING

The primary factor in the premature failure of moderate to large composite restorations is secondary decay at the margins of the restorations³. Zipbond Universal is fluoride releasing to protect the tooth-restorative interface against demineralization. An effective marginal seal that fights recurrent decay results in a longer lasting restoration.

KEY FEATURES

Consistent bond strengths to dentin and enamel

Wet and dry dentin bonding

Proprietary combination of adhesive monomers

Predictable bond strengths to indirect substrates

Effective hybridization

Exceptional control

Highly esthetic

Pleasant aroma

Fluoride releasing

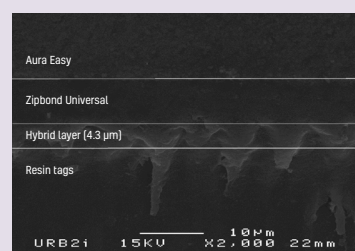
Easy to follow application

Convenient delivery

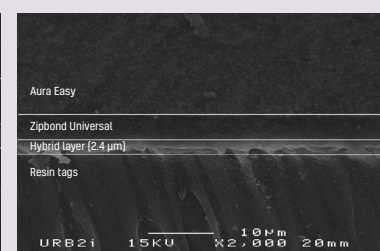
EFFECTIVE HYBRIDIZATION

The hybrid layer is the main bonding mechanism of adhesive agents¹. The adhesive monomers in Zipbond Universal diffuse effectively and evenly into the tooth surface and hybridization is continuous across the prepared cavity. Dentin tubules are completely sealed in both self etch and total etch techniques, minimizing the risk of post-operative sensitivity for the patient.

DENTIN WITH ETCHING - TOTAL ETCH TECHNIQUE~



DENTIN WITHOUT ETCHING - SELF ETCH TECHNIQUE~

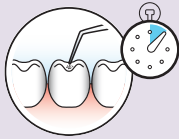


~Independently tested by Unité de Recherches Biomatériaux Innovants et Interfaces (URB2i-EA 4462 Paris Descartes). Chairman : Dr Jean-Pierre ATTAL

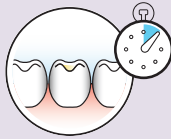
EASY TO FOLLOW APPLICATION

THE ADHESIVE DOES NOT NEED REFRIGERATION, FACILITATING EASE OF USE AND SPEED DURING THE DAY TO DAY OPERATION OF YOUR DENTAL CLINIC.

1 Scrub Zipbond Universal into the cavity for 10"



2 Leave idle for 10"



3 Dry with air until the surface is glossy and there is no movement of the bond



4 Light cure 10"



CONVENIENT DELIVERY

Zipbond Universal is available in a bottle and single use unit doses. In the bottle delivery, drop size is ideal and the adhesive extrudes easily with no mess. The unit dose delivery is unique and proprietary to SDI.

**330
DROPS
PER BOTTLE**

INDICATIONS FOR USE

Direct Applications

Light cured composite restorations

Light cured compomers

Cavity sealing prior to placement of indirect restorations

Composite repair of porcelain and hybrid ceramic restorations

Sealing exposed root surfaces which are causing hypersensitivity

Core build ups using light cure/dual cure composites

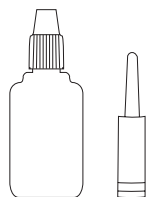
Protective varnish for glass ionomer (GI) filling

Indirect Applications

Cementation indirect restorations

» The primary factor in the premature failure of moderate to large composite restorations is secondary decay at the margins of the restorations³«

ORDER DETAILS



KITS

Zipbond Universal 5mL Bottle Kit	8100500
1 x Zipbond 5ml Bottle	
2 x Super Etch 2ml Syringes	
2 x 20 Pack Points Disposable Brushes	
1 x Mixing Well	
25 x Super Etch Disposable Tips (23 Gauge)	
Zipbond Universal Single Dose Kit	8100501
50 x 0.1ml Zipbond Single Dose	
50 x Points Disposable Brushes	
1 x Single Dose Holder	
Zipbond Universal Bottle Refill	8100502
1 x Zipbond Universal 5ml Bottle	

* SDI internal data

^ Scotchbond™ Universal, Clearfill™ Universal Bond Quick, Adhese® Universal, Alumina, Lava™ Zirconia, Rexillum III, Wironit, Titanium Grade 1 and MZ100 are not registered trademarks of SDI Limited.

- 1 Eshrak Sofan et al [2017], 'Classification review of dental adhesive systems: From the IV generation to the universal type', Annali Di Stomatologia.
- 2 Howard E Strassler et al [2018], 'Bonding Materials - Reimagining Dental Bonding: predictable restorations for patients.
- 3 Paulette Spencer et al [2010], 'Adhesive/Dentin Interface: The Weak Link in the Composite Restoration', NCBI.



YOUR SMILE. OUR VISION.



01-2020

M100422 C



+D036M1004221X

MADE IN AUSTRALIA
by SDI Limited
Bayswater, Victoria 3153
Australia 1800 337 003
www.sdi.com.au

AUSTRIA 00800 0225 5734
BRAZIL 0800 770 1735
FRANCE 00800 0225 5734
GERMANY 0800 100 5759
ITALY 00800 0225 5734

NEW ZEALAND 0800 734 034
SPAIN 00800 0225 5734
UNITED KINGDOM 00800 0225 5734
USA & CANADA 1 800 228 5166