

»PULLover«

RETRACTION TUBE

The »PULLover« is a stretchable tube which just needs to be pulled over the tooth stump.

The features are:

Easy to fit

Time-saving adaption procedure

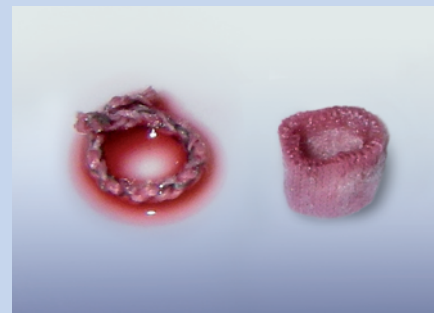
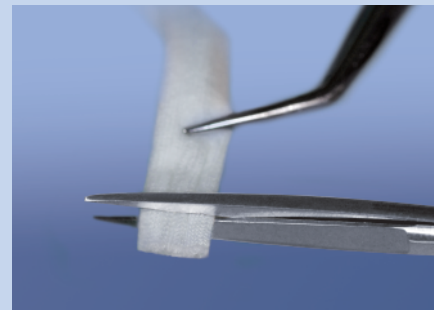
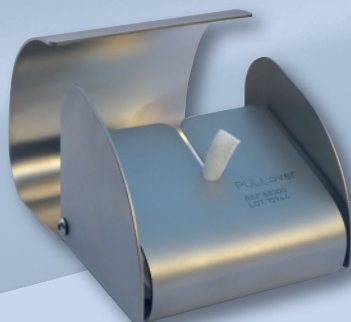
Just pull over the tooth stump

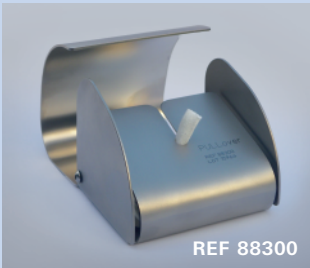
Improved position stability in the sulcus

Thanks to its elasticity

Outstandingly absorptive

Thanks to special treated synthetic fibers. The meshes function as pores, which improve the suction power with their capillary action.





REF 88300



REF 88200



REF 88110



REF 88100

»Pullover« Retractiontube, length 40 cm

»PULLover«		REF
Intro Kit: Retraction Tube, Ø 5 mm, length 40 cm, in Dispenser (REF 88110) Application Tweezers, stainless steel (REF 88200) Instruction for Use	Assortment	88 400
Test Kit: Retraction Tube, Ø 5 mm, length 10 cm Application Tweezers, stainless steel (REF 88200) Instruction for Use	Assortment	88 500
Retraction Tube , Ø 5 mm, length 40 cm, Refill Pack	each	88 100
Retraction Tube , Ø 5 mm, length 40 cm, Dispenser, refillable	each	88 110
Application Tweezers , stainless steel	each	88 200
Dispenser , stainless steel	each	88 300